



Testimony Prepared for the Committee on Education and Workforce Development September 9, 2024

Agenda



Bureau Transition

- A. Measurable Goals
- B. Pathway To Success



Facilities Maintenance

- A. Key Initiatives
- B. Project Highlights



New Schools Program

- A. Program Overview & Budget
- B. Project Workflow
- C. Project Updates

Current & Urgent Needs Tropical Storm After Math



Process & Progress

Tropical Storm After Math

**Emergency Repairs:
Immediate and Collaborative Response**



**Preventative Maintenance:
Minimizes Emergency Repairs**



Restored Functionalities  **for School Re-Opening**

1 BUREAU TRANSITION



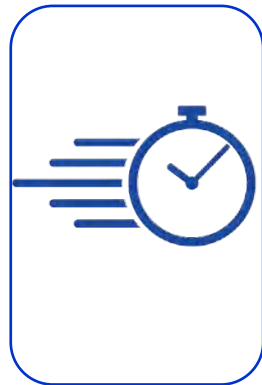
Bureau Transition Measurable Goals



Building and operating as a high-performing and efficient team



Aligning with industry best practices for school facility design, construction and maintenance



Providing timely and accurate response to school staff and the broader school community

Bureau Transition Pathway To Success

Improvements to Align with Industry Best Practices :



Staffing



Funding



Standardization



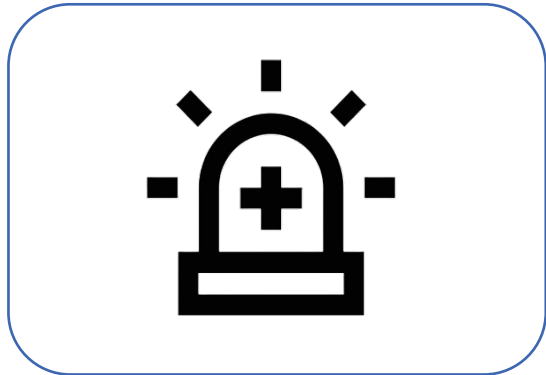
Collaboration

2 FACILITIES MAINTENANCE

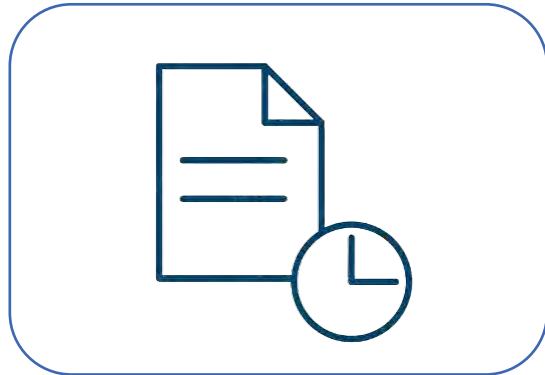


Facilities Maintenance Prioritizing Strategy

Repair System Categorize :



Emergency



Temporary



Regular



Summer

Facilities Maintenance Project Highlights: Kitchen Renovations

John H. Woodson



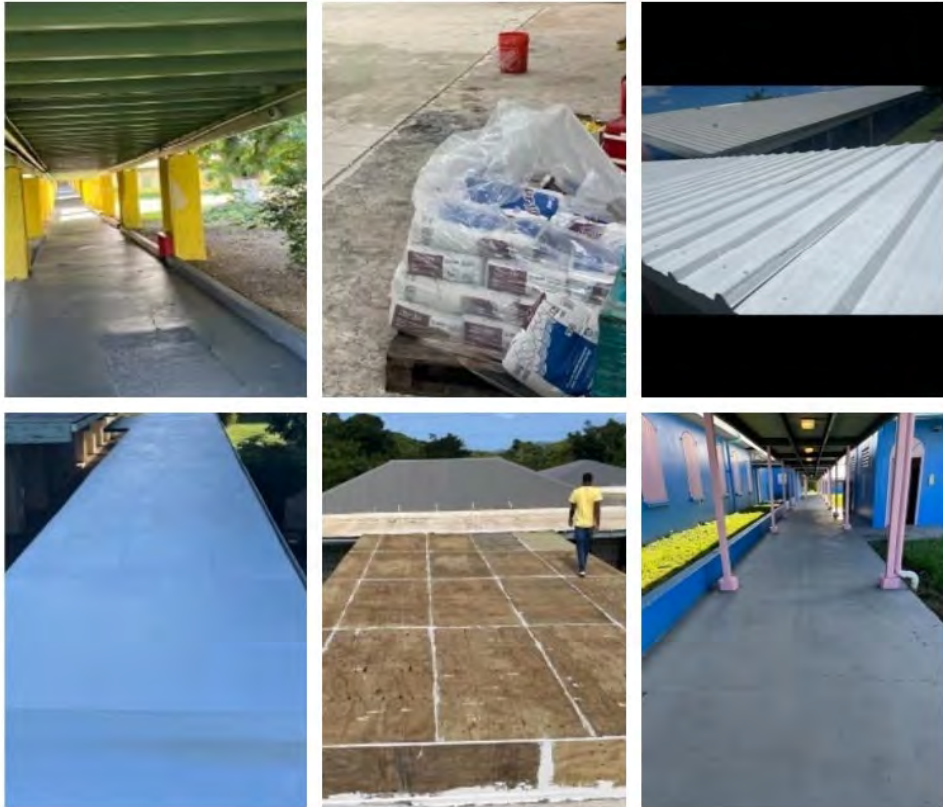
Claude O. Markoe



Central High School



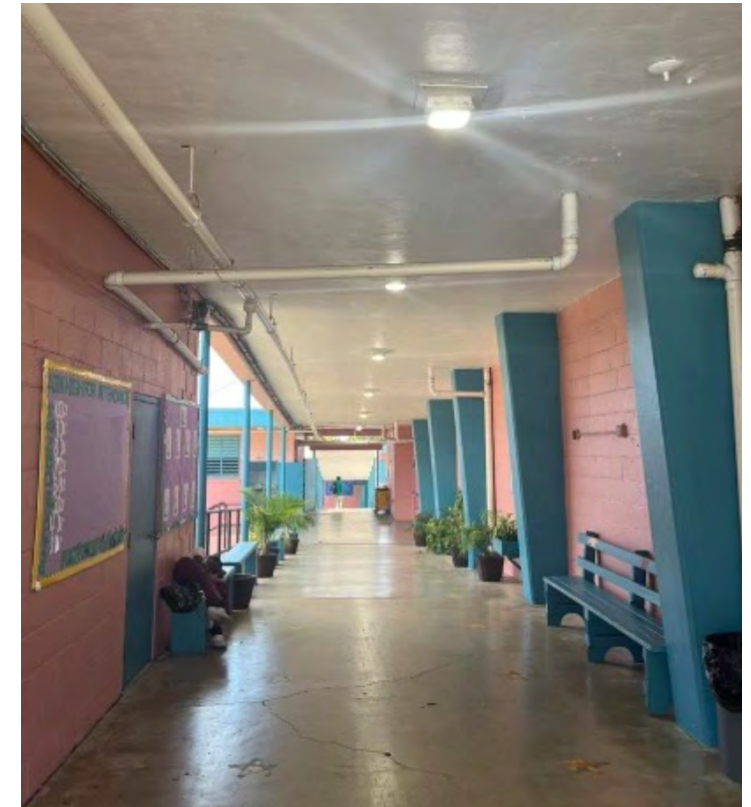
Facilities Maintenance Project Highlights



Central High School Roof Repairs and Walkway



Pearl B Larsen
Playground Demolition



Garden Hall Light Replacement

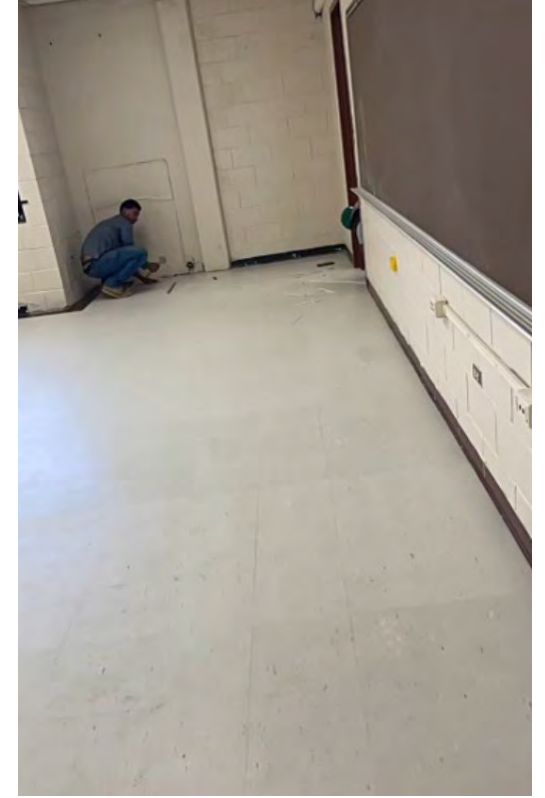
Facilities Maintenance Project Highlights



John Woodson
Bathroom and
Stage Repair



Automotive Class
Tile Replacement



Lew Muckle
Tile Replacement

Facilities Maintenance Project Highlights



Woodson
Fence Replacement



Alfredo Kitchen
HVAC Replacement

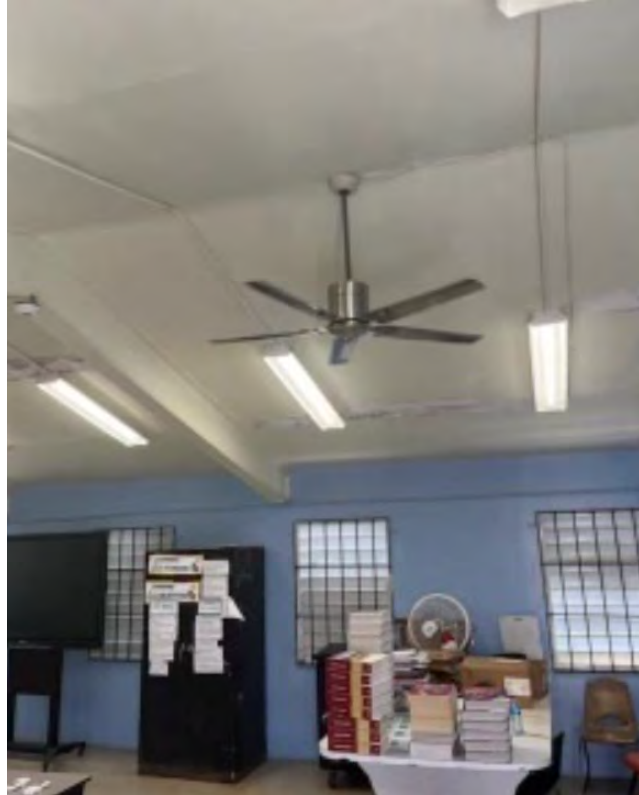


Juanita Gardine
Gym Light Replacement

Facilities Maintenance Project Highlights



Rivera Roof and
Gutter Replacement



Complex and Central HS
Fan Replacement

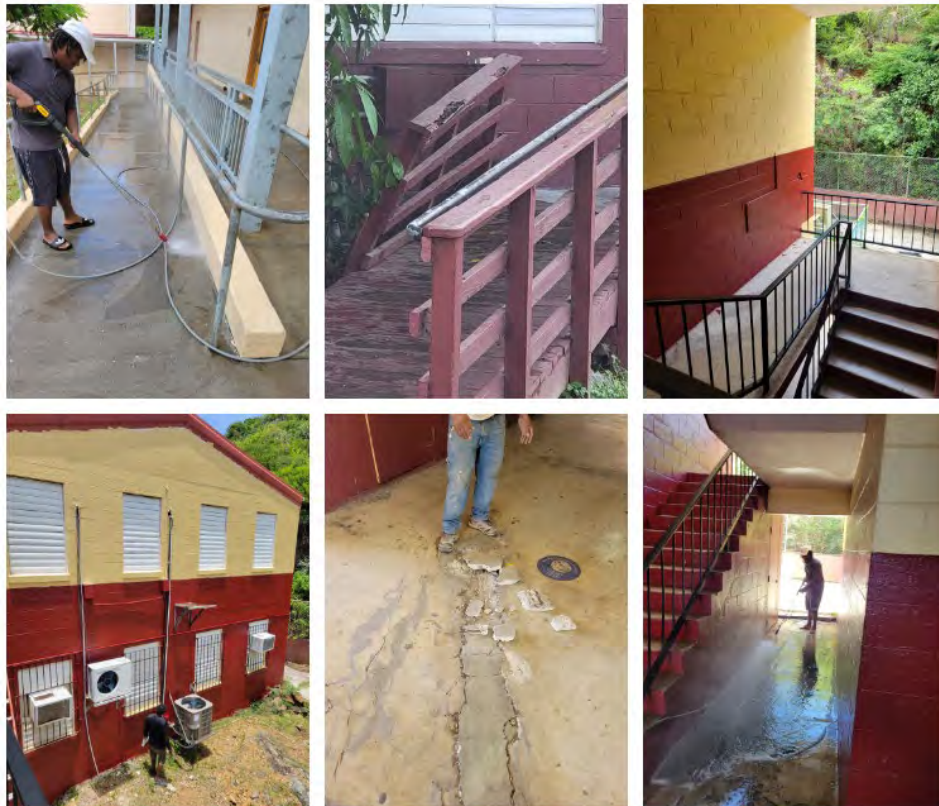


Alfredo
Wall Scrubbing

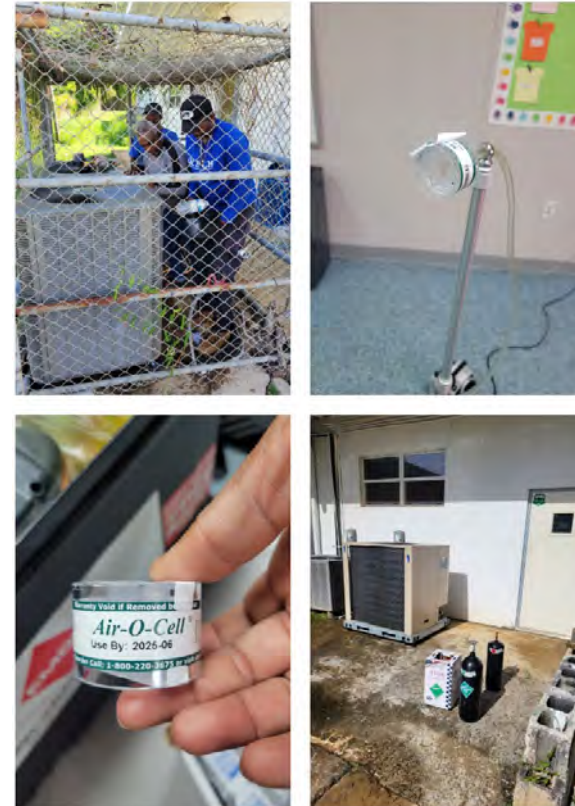


Lew Muckle
Painting and AC Install

Facilities Maintenance Project Highlights



Ivanna Eudora Kean High School
Powerwashing and Repairs



CAHS 9th Grade Academy
AC Replacement

Facilities Maintenance Project Highlights



New Signage at Charlotte Amalie High School, Ivanna Eudora Kean High School, Julius Sprauve, Bowsky, Gomez, and Muller

Facilities Maintenance Key Initiatives

Facility Assessments



Work Order System

Prioritized Repair System



Enhanced Leadership Team



Expansion of Skilled
Workforce

Security Enhancement

Regular Reporting to
Education Commissioner
Community Engagement



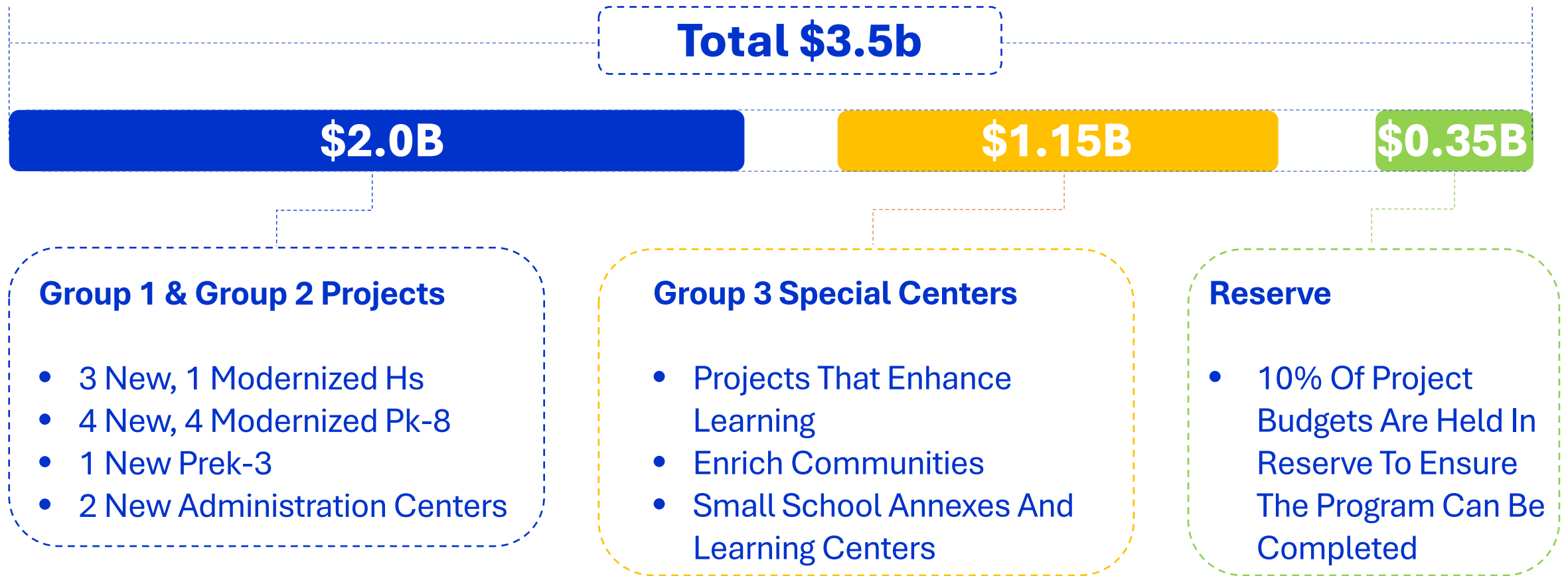
Quarterly PTSA Updates

Weekly Gubernatorial
Briefings

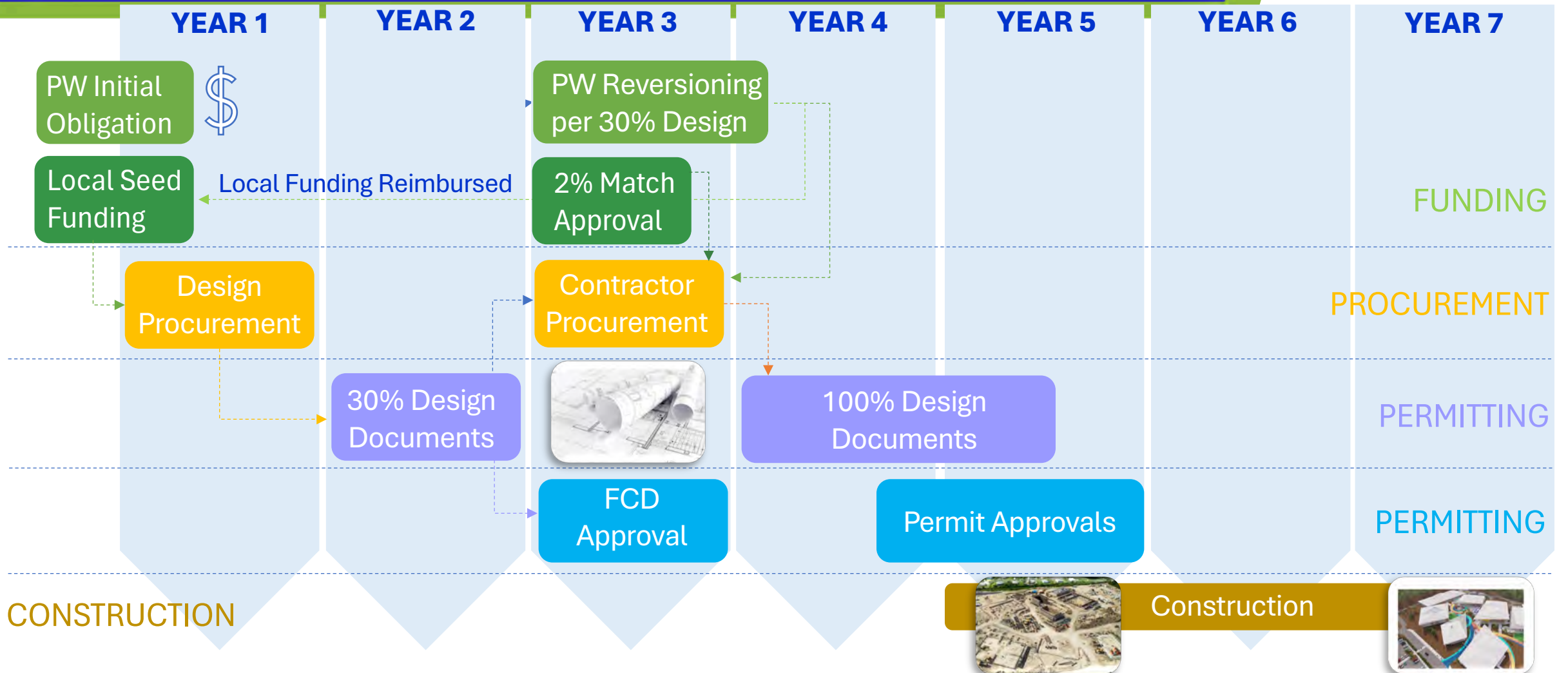
3 NEW SCHOOLS PROGRAM



New Schools Program Program Overview & Budget



New Schools Program Project Execution Workflow



New School Program Completed Projects



Gladys Abraham
Adult CTE Center
Phase 1

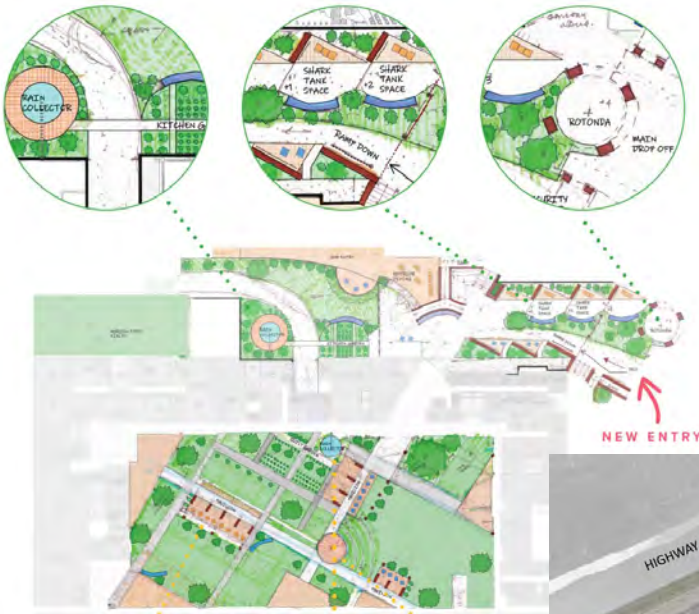


Charlotte Amalie
High School
9th Grade Center
(Formerly Wheatley)



New Schools Program Projects in Progress

Projects in Design



**Ed. Complex +
CTECH High Schools**

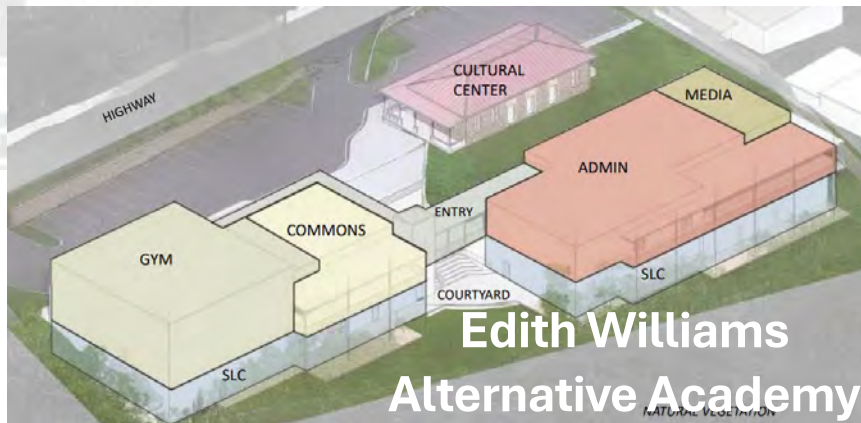
Projects Pending Design-Build Awards



Central High School



Charlotte Amalie High School



**Edith Williams
Alternative Academy**



Bertha C. Boschulte School

Modernization Program In Progress: Bundles

STT Bundle – In Process



1. STT Administrative Center
2. Lockhart
3. E. Benjamin Oliver
4. Jane E. Tuitt
5. Eudora Kean High School
6. Bowsky

STJ Bundle – Fall 2024



1. Julius E. Sprauve School
2. Myrah Keating Smith
Community Health Center
3. Morris de Castro Clinic

STX Bundle – Spring 2025



1. Educational Complex High School
2. Alexander Henderson
3. Alfredo Andrews
4. Claude O. Markoe
5. Pearl B. Larsen School

New Schools Program Arthur Richards Update



Thank You!

Mr. Craig Benjamin

craig.benjamin@vide.vi

Ms. Chaneel Callwood

chaneel.callwood@vide.vi

