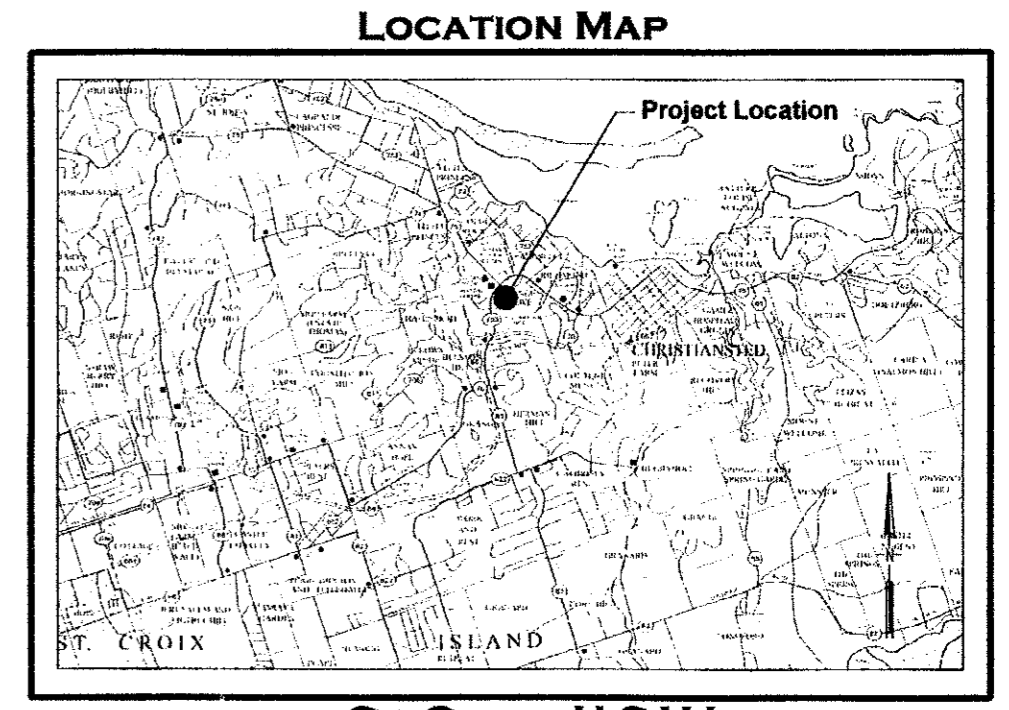
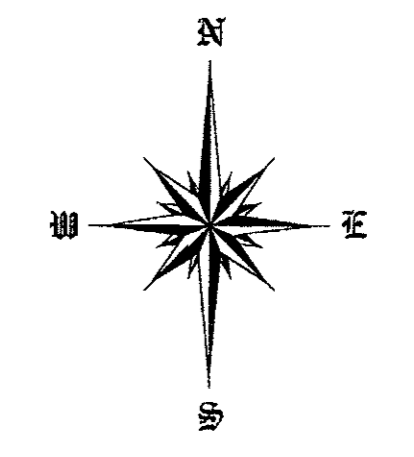




** See DWG D9-6686-C020*



ST. CROIX, U.S.V.I.



North Arrow Refers to Dwg. No. A9-34-C009

LEGEND

- ⊙ Steel Pin Placed
- Steel Pin Found
- Concrete Monument Found
- △ Recorded Point

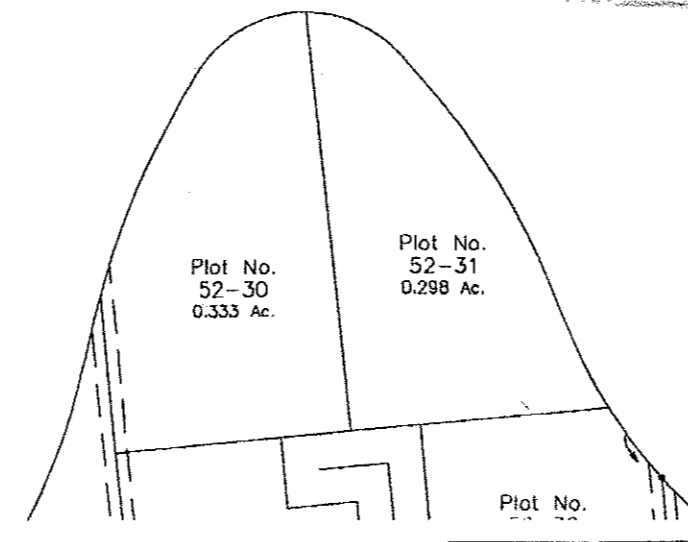
General Notes:

1. Surveyed by Electronic Total Station
2. Bearing & Distances Reference: Dwg. No. A9-34-C009
3. Distances & Acreages are in U.S. Measure
4. Property is Currently Zoned B-2
5. Property ID No: 2-0480-00215-00

CERTIFIED A TRUE COPY
 GOVERNMENT OF THE VIRGIN ISLANDS U.S.A.
 Office of the Public Surveyor
 ST. CROIX

DATE: *August 12, 2022*
 No. *D9-6574-C017*


Plot No. 51
 12.713 Ac.
 Dwg. No. A9-34-C009
D9-6537-C017



Plot No. 52-30
 0.333 Ac.

Plot No. 52-31
 0.298 Ac.

OLG Dwg. No. **D9-6574-C017**



P.O. Box 1690 - #59 Eliza's Retreat
 Christiansted, V.I. 00821
 Tel: (340)-778-8747 Cell: (340) 690-4387
 rob.c.cintron@gmail.com

Subdivision Map for:

**PLOTS No. 50 INTO PLOT No. 50-1 &
 REMAINDER PLOT No. 50 ESTATE ORANGE GROVE
 COMPANY QUARTER - CHRISTIANSTED
 ST. CROIX - U.S. VIRGIN ISLANDS**

Scale: 1" = 80' Date: December 13, 2017

Prepared & Approved By: *[Signature]*
 Roberto C. Cintron, P.E. #948-E

Plot No. 40
Dwg. No. 4048-A

Plot No. 35

Plot No. 1
Dwg. No. 1621 & 2087

Plot No. 50-1
Dwg. No. D9-6574-C017

PLOT No. 50-4
0.998 U.S. Ac.
(43,492 s.f.)

Plot No. 36
Dwg. No. 523

PLOT No. 50-5
0.750 U.S. Ac.
(32,665 s.f.)

Plot No. 53
14.003 Ac.
Dwg. No. A9-34-C009

**REMAINDER
PLOT No. 50**
8.140 U.S. Ac.
(354,578 s.f.)

Plot No. 51
12.713 Ac.
Dwg. No. A9-34-C009

PLOT No. 50-6
0.750 U.S. Ac.
(32,664 s.f.)

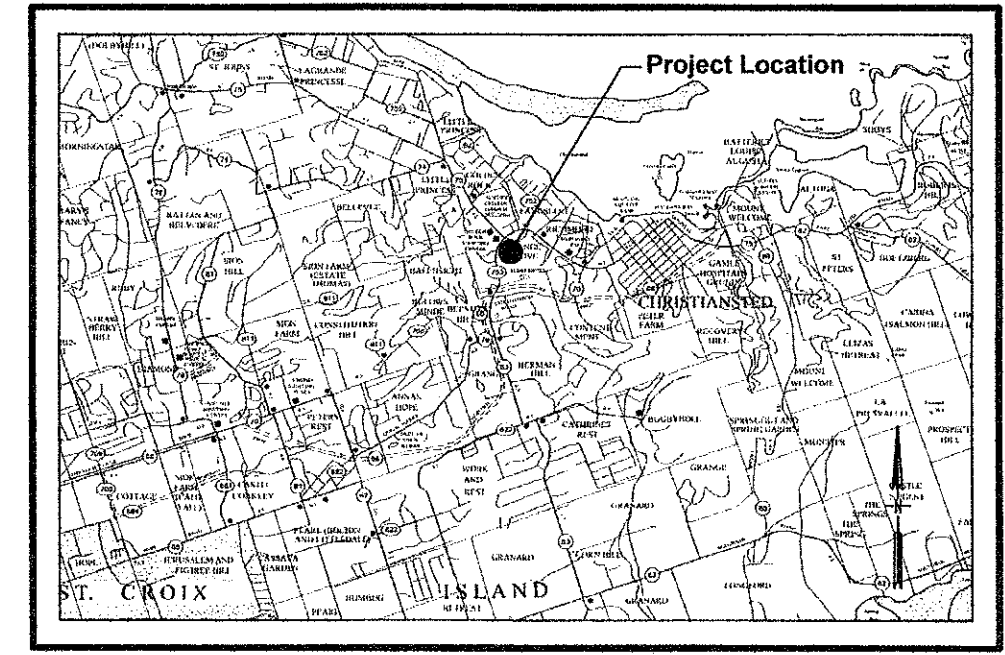
Road Plot No. 50-2
0.171 Ac.
Dwg. No. A9-145-C020

Road Plot No. 50-3
0.171 Ac.
Dwg. No. A9-145-C020

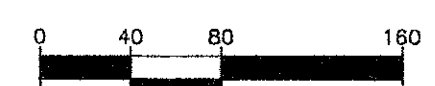
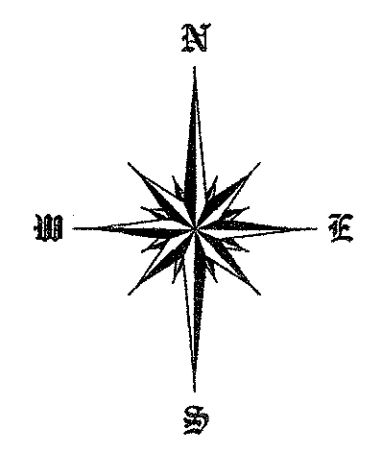
Plot No. 52-30
Dwg. No. D9-6460-C015

Plot No. 52-31
Dwg. No. D9-6460-C015

LOCATION MAP



ST. CROIX, U.S.V.I.



North Arrow Refers to Dwg. No. A9-34-C009

LEGEND

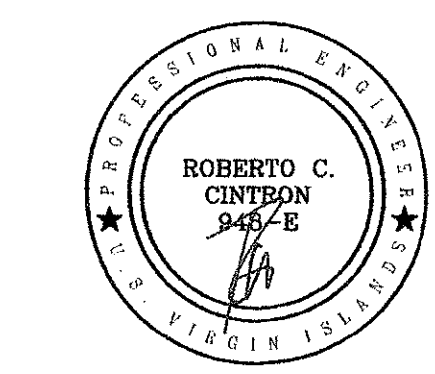
- Steel Pin Placed
- Steel Pin Found
- Concrete Monument Found
- △ Recorded Point

General Notes:

1. Surveyed by Electronic Total Station
2. Bearing & Distances Reference: Dwg. No. A9-34-C009
3. Distances & Acreages are in U.S. Measure
4. Property is Currently Zoned B-2
5. Property ID No: 2-0480-00215-00

CERTIFIED A TRUE COPY
GOVERNMENT OF THE VIRGIN ISLANDS U.S.A.
Office of the Public Surveyor
ST. CROIX

DATE August 12, 2020
No. D9-6686-0020



P.O. Box 1699 - #59 Eliza's Retreat
Christiansted, V.I. 00821
Tel: (340)-778-8747 Cell: (340) 690-4367
rob.c.cintron@gmail.com

Subdivision Map of:
**REMAINDER PLOT No. 50 INTO PLOT No. 50-4, 50-5, 50-6
& REMAINDER PLOT No. 50, ESTATE ORANGE GROVE
COMPANY QUARTER - CHRISTIANSTED
ST. CROIX - U.S. VIRGIN ISLANDS**

Scale: 1" = 80' Date: November 18, 2019

OLG Dwg. No. **D9-6686-0020**