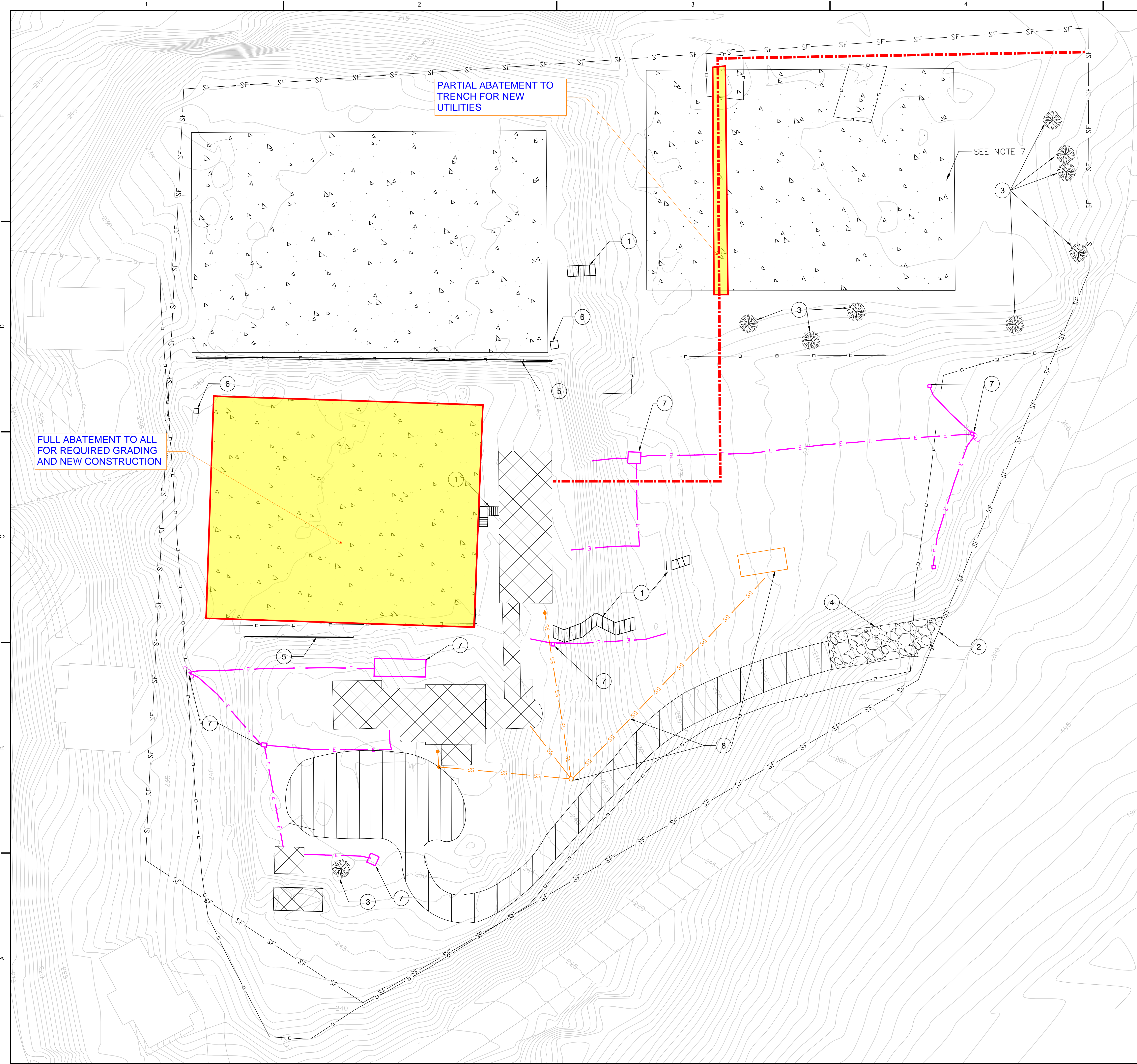


ALL INFORMATION CONTAINED HEREIN IS THE PROPERTY OF SPRINGLINE ARCHITECTS, L.L.C. THE CONCEPTS, IDEAS, DESIGNS AND DETAILS AS SHOWN ON THE DOCUMENTS WERE CREATED, DEVELOPED AND PRESENTED FOR USE ON THIS SPECIFIC PROJECT AND SHALL NOT BE REUSED FOR ANY PURPOSE WHATSOEVER WITHOUT THE WRITTEN CONSENT OF SPRINGLINE ARCHITECTS, L.L.C. THE OWNER SHALL BE PERMITTED TO RETAIN COPIES FOR INFORMATION AND REFERENCE PURPOSES ONLY.



PARTIAL ABATEMENT TO TRENCH FOR NEW UTILITIES

FULL ABATEMENT TO ALL FOR REQUIRED GRADING AND NEW CONSTRUCTION

**EROSION CONTROL + DEMOLITION LEGEND**

- DEMOLISH MULTI-STORY BUILDING
- DEMOLISH TENNIS COURT (REFER TO NOTE 6)
- DEMOLISH ASPHALT PAVEMENT
- GRAVEL/CONSTRUCTION ENTRANCE
- SILT FENCE
- DEMOLISH CHAIN LINK FENCE/GATE/GUARD RAIL
- ELECTRICAL UTILITY DEMOLITION (REFER TO ELECTRICAL PLANS)
- DEMOLISH SANITARY SEWER SYSTEM + STRUCTURES

**EROSION CONTROL + DEMOLITION KEY NOTES**

- 1 DEMOLISH CONCRETE STAIRS
- 2 SAW CUT ASPHALT PAVEMENT
- 3 PROVIDE MAHOGANY TREE PROTECTION PER DETAIL 11 SHEET C4.00
- 4 GRAVEL CONSTRUCTION ENTRANCE
- 5 DEMOLISH RETAINING WALL. FIELD VERIFY HEIGHT
- 6 DEMOLISH CONCRETE BOX
- 7 DEMOLISH ELECTRICAL STRUCTURE
- 8 DEMOLISH SANITARY SEWER PIPING, CLEANOUTS, MANHOLES, AND SEPTIC SYSTEM

**EROSION CONTROL + DEMOLITION NOTES**

1. COORDINATE ELECTRICAL DEMOLITION + PROTECTION WITH ELECTRICAL ENGINEER. PROTECT EXISTING TREES TO REMAIN (AS NECESSARY).
2. CONTRACTOR TO INSTALL EROSION CONTROL MEASURES PRIOR TO ANY DEMOLITION OR CONSTRUCTION.
3. COORDINATE DEMOLITION OF ALL UTILITIES WITH LOCAL PROVIDERS, NEC, LOCAL REGULATIONS AND CODES. CONTRACTOR TO INFORM WAPA+WMA PRIOR TO ANY DEMOLITION.
4. DEMOLITION INCLUDES PROPER LEGAL REMOVAL AND DISPOSAL OF LARGE BATTERY SYSTEM. DEMOLITION CONTRACTOR TO PRICE WORK SCOPE WITH THE FOLLOWING COMPANY AND INCLUDE THEIR SERVICES FOR REMOVING AND DISPOSING OF ALL BATTERIES IN THE BID PRICE: Virgin Islands Regulated Waste Management, Inc. PO Box 222994, Christiansted, VI 00822 Phone: 340-773-9121
5. CONTRACTOR TO PROPERLY DISPOSE OF ASBESTOS CONCRETE PAVEMENT IDENTIFIED WITHIN THE EXISTING TENNIS COURTS. REFER TO SPECIFICATION ON PROPER ASBESTOS ABATEMENT FOR DISPOSAL PROCEDURES.
6. CURRENT EXTENTS OF TENNIS COURT ON NORTHEAST SIDE ARE UNKNOWN AND ARE SHOWN HERE FOR DEMOLITION INTENT ONLY. FIELD VERIFY ACTUAL EXTENTS.



**HARRIS**  
Harris Civil Engineers, LLC  
1200 Harvest Street  
Suite 200  
Orlando, Florida 32803  
Phone: (407) 629-4777  
Fax: (407) 629-7888  
www.harrisengineers.com  
EB 1614

PROGRESS DOCUMENTS FOR INTERIM REVIEW AND APPROVAL NOT FOR REGULATION OR PERMITTING FOR CONSTRUCTION

Ref	Description	Date
A	Schematic	03/04/2022
B	30% CDs	08/18/2022
C	60% CDs	
D	90% CDs	
E	100% CDs	

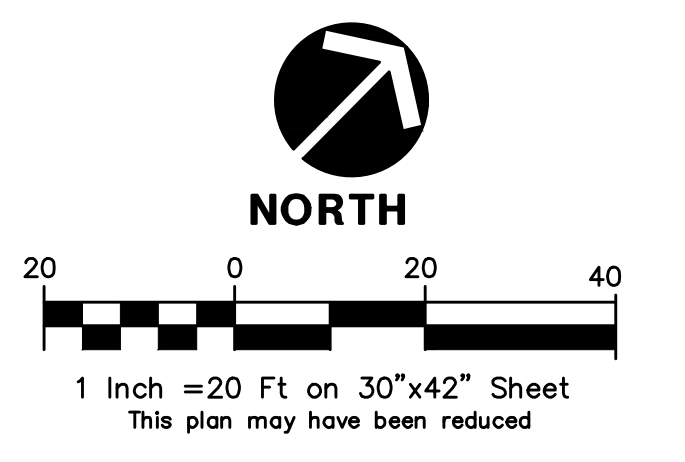
**VITEMA EOC WIND RETROFIT & SAFE ROOM**  
ST. CROIX, USVI  
EROSION CONTROL + DEMOLITION PLAN

REVISIONS:	No.	Description	Date

DRAWN BY: NW  
CHECKED BY: DT  
DATE: 08/18/2022

HCE JOB NUMBER  
**06162037**

SHEET NUMBER  
**C0.90**



30% CONSTRUCTION DOCUMENTS NOT FOR CONSTRUCTION