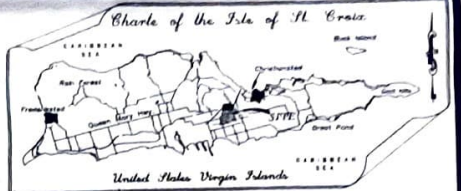


MATR. 68
Beaton Hill
Drawing No. A9-3-8008

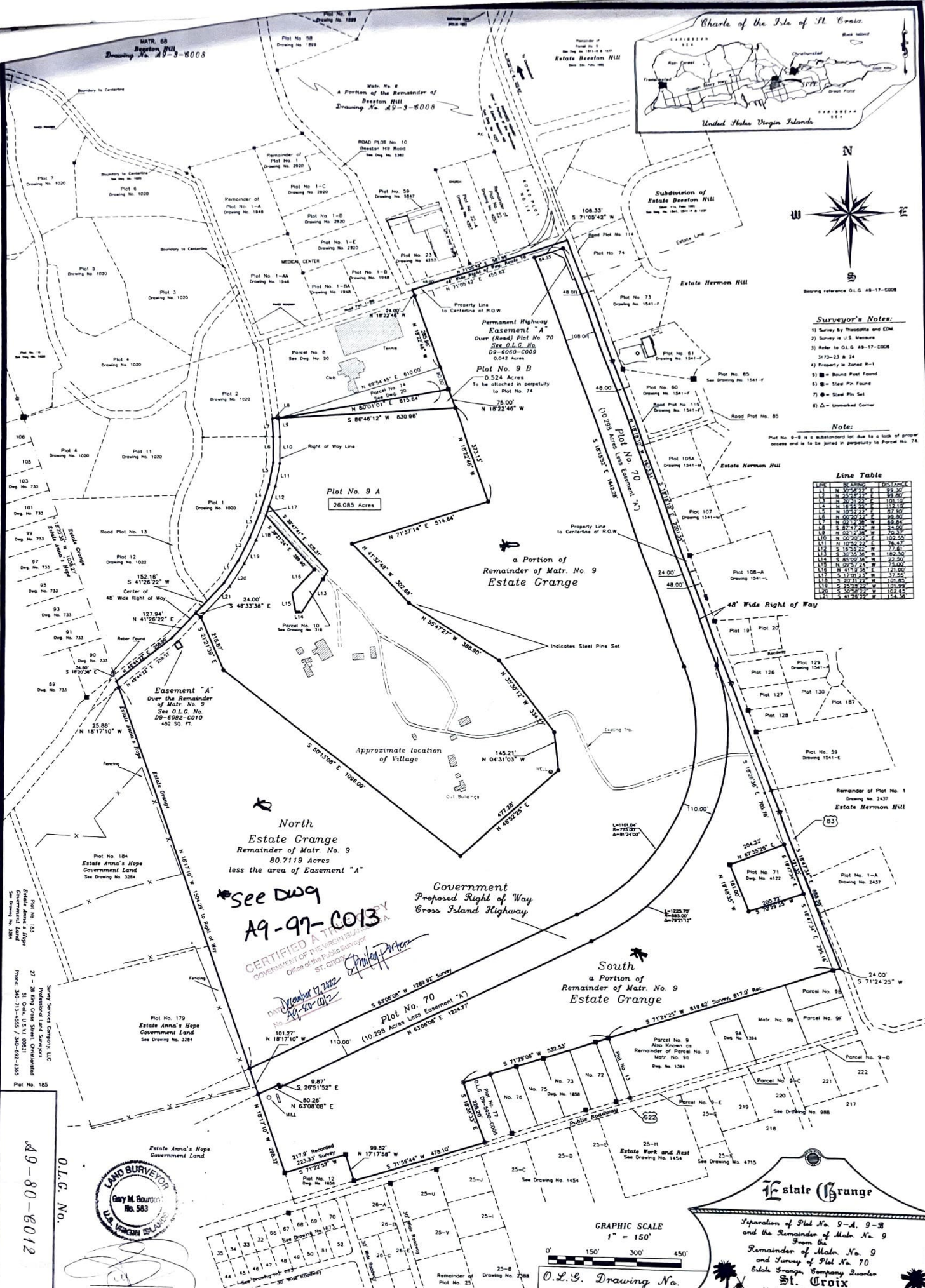
A Portion of the Remainder of
Beaton Hill
Drawing No. A9-3-8008



- Surveyor's Notes:**
- 1) Survey by theodolite and EDM
 - 2) Survey in U.S. Measure
 - 3) Refer to O.L.G. 88-17-0008
 - 4) Property is Zoned R-1
 - 5) \square = Bound Pin Found
 - 6) \oplus = Stake Pin Found
 - 7) \ominus = Stake Pin Set
 - 8) \triangle = Unmarked Corner
- Note:**
Plot No. 9-B is a subdivision lot due to a lack of proper access and it is to be joined in perpetuity to Parcel No. 74.

Line Table

LINE	BEARING	POSTMARK
L1	N 25°25'25" E	99.80'
L2	N 70°25'25" E	99.80'
L3	N 18°25'25" E	112.10'
L4	N 105°25'25" E	99.80'
L5	N 20°25'25" E	99.80'
L6	N 80°25'25" E	99.80'
L7	N 27°25'25" E	24.00'
L8	N 100°25'25" E	102.50'
L9	N 105°25'25" E	78.12'
L10	N 102°25'25" E	78.12'
L11	N 105°25'25" E	78.12'
L12	N 102°25'25" E	78.12'
L13	N 105°25'25" E	78.12'
L14	N 102°25'25" E	78.12'
L15	N 105°25'25" E	78.12'
L16	N 102°25'25" E	78.12'
L17	N 105°25'25" E	78.12'
L18	N 102°25'25" E	78.12'
L19	N 105°25'25" E	78.12'
L20	N 102°25'25" E	78.12'
L21	N 105°25'25" E	78.12'
L22	N 102°25'25" E	78.12'
L23	N 105°25'25" E	78.12'
L24	N 102°25'25" E	78.12'
L25	N 105°25'25" E	78.12'
L26	N 102°25'25" E	78.12'
L27	N 105°25'25" E	78.12'
L28	N 102°25'25" E	78.12'
L29	N 105°25'25" E	78.12'
L30	N 102°25'25" E	78.12'



North
Estate Grange
Remainder of Matr. No. 9
80.7119 Acres
less the area of Easement "A"

***See DWG
A9-97-C013**

CERTIFIED A TRUE AND CORRECT COPY
GOVERNMENT OF THE VIRGIN ISLANDS
Office of the Public Surveyor
ST. CROIX

Spencer Parker
DATE: December 17, 2012
BY: A9-80-0012

Government
Proposed Right of Way
Cross Island Highway

South
a Portion of
Remainder of Matr. No. 9
Estate Grange



Estate Grange

Separation of Plot No. 9-A, 9-B
and the Remainder of Matr. No. 9
From the
Remainder of Matr. No. 9
and Survey of Plot No. 70
Estate Grange, Company Owner
St. Croix
United States Virgin Islands

Subd. May 15th, 2012

GRAPHIC SCALE
1" = 150'

O.L.G. Drawing No.
A9-80-8012

O.L.G. No. A9-80-8012