



SISTER EMMA COTTAGE

QUEEN LOUISE HOME FOR CHILDREN

January 18, 2023

1

HISTORY OF THE FACILITY

SISTER EMMA COTTAGE



Sister Emma Cottage is a special unit on the Queen Louise Home campus that provides intensive 24-hour residential foster care for children and young adults with severe developmental and physical disabilities. Many of our residents use wheelchairs and have special impairments and are medically fragile.

Our staff includes two (2) registered nurses and trained direct care workers*, who work to ensure each resident is safe and comfortable. Every day, staff members prepare nutritious meals according to the residents' feeding ability, including tube-fed nourishment. Specialized lifts and bath equipment help staff groom and maintain healthy, clean environment.

Even our littlest residents need to meet their developmental goals, and staff members engage each resident to



built trust and to foster growth. Residents have personal therapy plans that correspond to their medical needs and challenges, and our team ensures that medical appointments, medications, therapies, and recreational activities are properly balanced throughout the day.

We celebrate birthdays, plan summer activities, take local trips and enjoy the love of a typical family-like traditions. Sister Emma Cottage is a family, and our staff takes every step possible to ensure children in our care are loved and enjoy the best quality of life.



Sister Emma Cottage came about in the late 1980's, as Queen Louise Home began to receive many requests for placement of children with severe physical and developmental disabilities. The children required an intensive level of care not possible in the Home's standard cottages, so a special cottage opened in 1996 to accommodate children with severe disabilities. It was named Sister Emma Cottage in honor of Sister Emma Francis, a Lutheran deaconess, who served at the cottages for nearly 40 years.

SISTER EMMA FRANCIS

Sister Emma Francis was a native of St. Kitts who had been educated at a Moravian College in Antigua and then at a Bible House and hospital in Germany. The school's mission board considered Sister Emma for missionary work in Cameroon and Sudan. However, they denied posting her in these areas because they feared she would not be accepted as an equal with white missionaries there. In 1906, she was invited to the Deaconess Motherhouse in Friendenshort, a large institution that trained deaconesses and gave them opportunities for service. She received the garb of a deaconess in 1907 and commissioned for service at one of the three orphanages run by Queen Louise Home on St. Croix. She became the first Black deaconess to serve in North America and the first Lutheran deaconess to come from the West Indies. She served at least the orphanage for nearly 40 years, touching the lives of hundreds of children in the Virgin Islands, and she passed away in 1945.



SISTER EMMA FRANCIS

EXISTING FACILITY



T

2

PROJECT DESCRIPTION

The project will be replacing the existing Sister Emma Cottage home for severely disabled children. The current facility is undersized, obsolete and does not meet the minimum standards of living for the type of population that it serves. The project will be part of the Queen Louise Home for Children complex, located in close proximity to the Town of Frederiksted. The new one-story facility will be in full compliance with the ADA regulations, as well as all other applicable codes.

CONSTRUCTION TYPE

The building will be constructed with reinforced concrete and reinforced concrete block units, with cement plaster/paint finish on the outside and insulation/drywall on the inside. The pitched roof areas will be finished with corrugated galvalume panels. Ceramic tile flooring will be installed on the concrete slab sub-floors. All windows and doors will be hurricane rated and impact resistant. Copper wiring will be used throughout the building. The structure will be fully air-conditioned.

DESIGN

The main goal of the design is to provide a safe, clean and comfortable facility in a home-like environment. The style and proportions are derived from the vernacular houses of St. Croix. The incorporation of a four-sided courtyard maximizes natural light in the building, while maintaining privacy. The design embraces nature, striving to bring the soothing outdoors inside the building. This plan configuration also provides a complete and secure outdoor area for the children. The covered entry porch with exposed wood rafters and traditional railing gives the facility an inviting residential feel.

PROGRAM

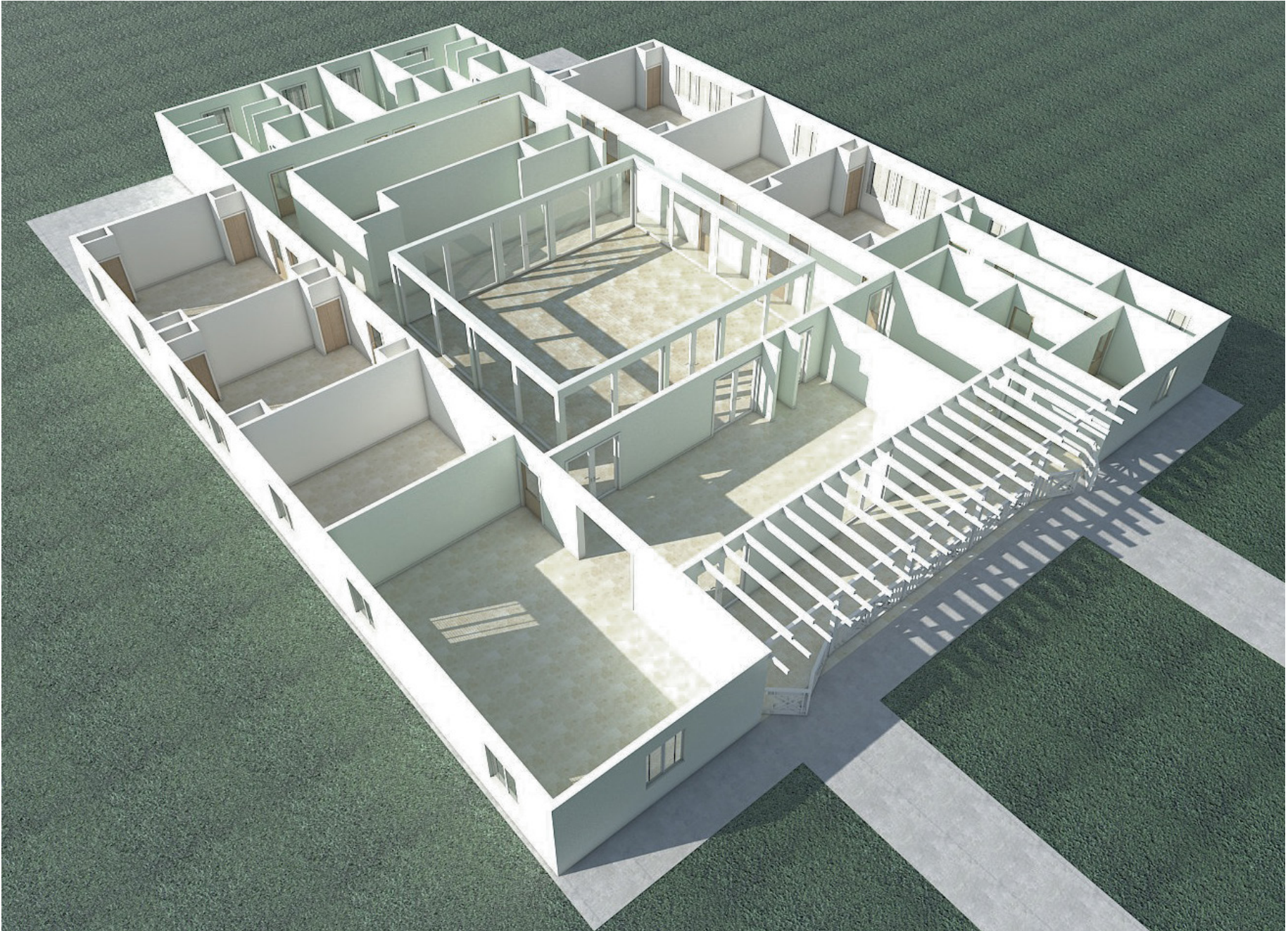
The building comprises of two symmetrical wings, which house bedrooms: one for girls and one for boys. Each wing accommodates 8 children

for a total of 16, with services centrally located in both wings. Bathroom facilities are concentrated in the northern pavilion and are easily accessed from both bedroom wings. The public, multipurpose and dining spaces are located towards the front of the building.

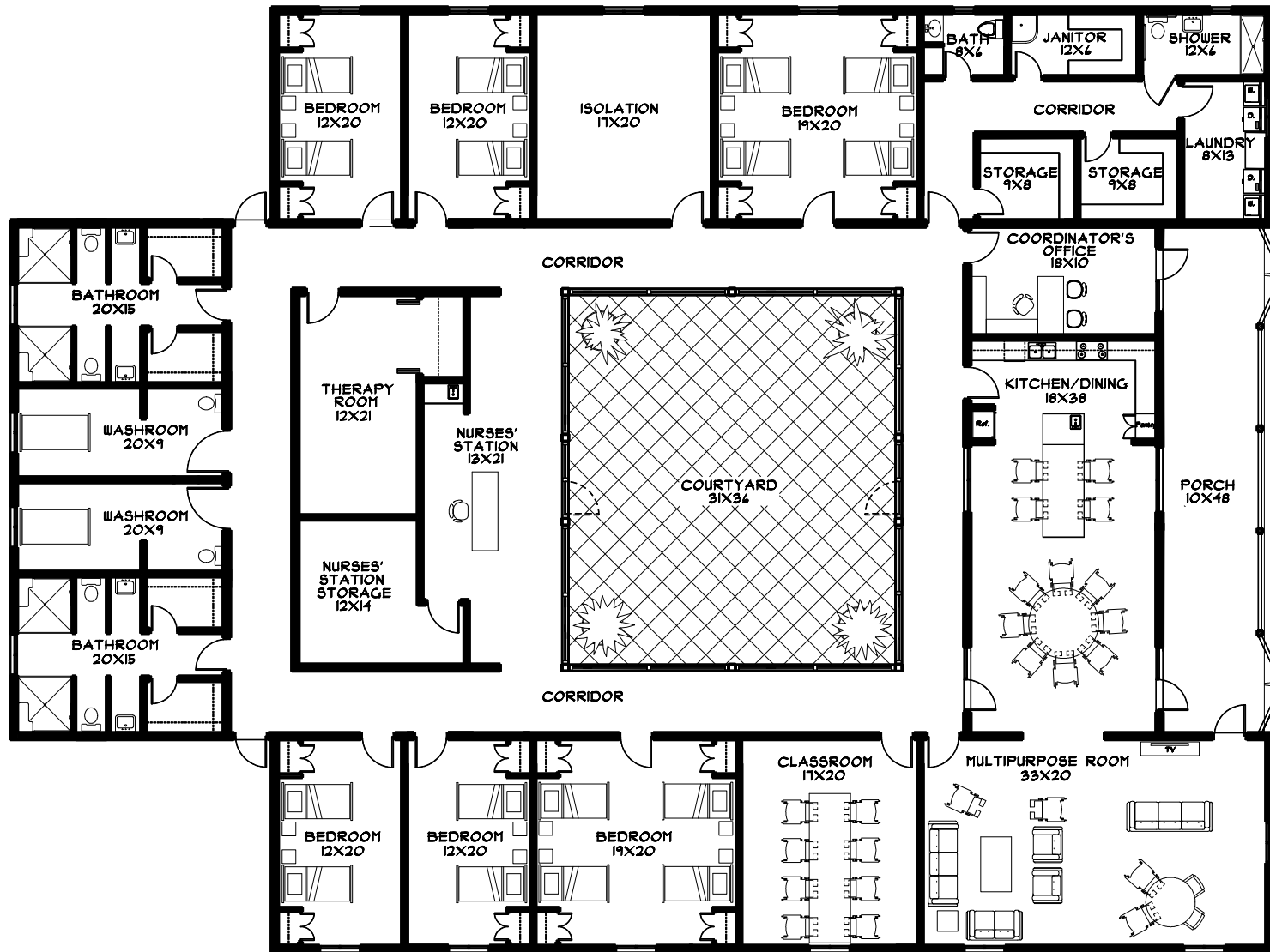
FRONT VIEW



OPEN ROOF BUILDING MODEL



FLOOR PLAN



Modified. See attached.

KITCHEN / DINING



COURTYARD



NURSES' STATION



BEDROOM



SISTER EMMA COTTAGE DISTRIBUTION OF AREAS.

ITEM #	DESCRIPTION	W (FT)	L (FT)	AREA (SF)
1	BATHROOM	15	20	300
2	WASHROOM	9	20	180
3	WASHROOM	9	20	180
4	BATHROOM	15	20	300
5	BEDROOM	12	20	240
6	BEDROOM	12	20	240
7	ISOLATION	17	20	340
8	BEDROOM	19	20	380
9	BATHROOM	8	6	48
10	JANITOR	12	6	72
11	SHOWER	12	6	72
12	STORAGE	9	8	72
13	STORAGE	9	8	72
14	LAUNDRY	8	13	104
15	COORDINATOR'S OFFICE	10	18	180
16	KITCHEN / DINING	18	38	684
17	PORCH	10	48	480
18	MULTIPURPOSE ROOM	20	33	660
19	CLASSROOM	17	20	340
20	BEDROOM	19	20	380
21	BEDROOM	12	20	240
22	BEDROOM	12	20	240
23	SHORT CORRIDOR	5.5	48	264
24	SHORT CORRIDOR	5.5	48	264
25	LONG CORRIDOR	5.5	56	308
26	LONG CORRIDOR	5.5	56	308
27	T. Corridor / Nurse Station	12	18.5	222
28	Therapy Room	12	21	252
29	Nurse Station Storage	12	14	168
30	Nurse's Station	13	21	273
31	Courtyard	31	36	1116
32	Small Corridor by Janitor	5.5	23	126.5
33	Entrance to back bath	5.5	8	44
34	New Restroom for Kitchen	10	10	100
35	Additional Kitchen Area	10	18	180

	NET AREA:			9429.5

FLOOR PLAN SISTER EMMA COTTAGE 8-30-21

