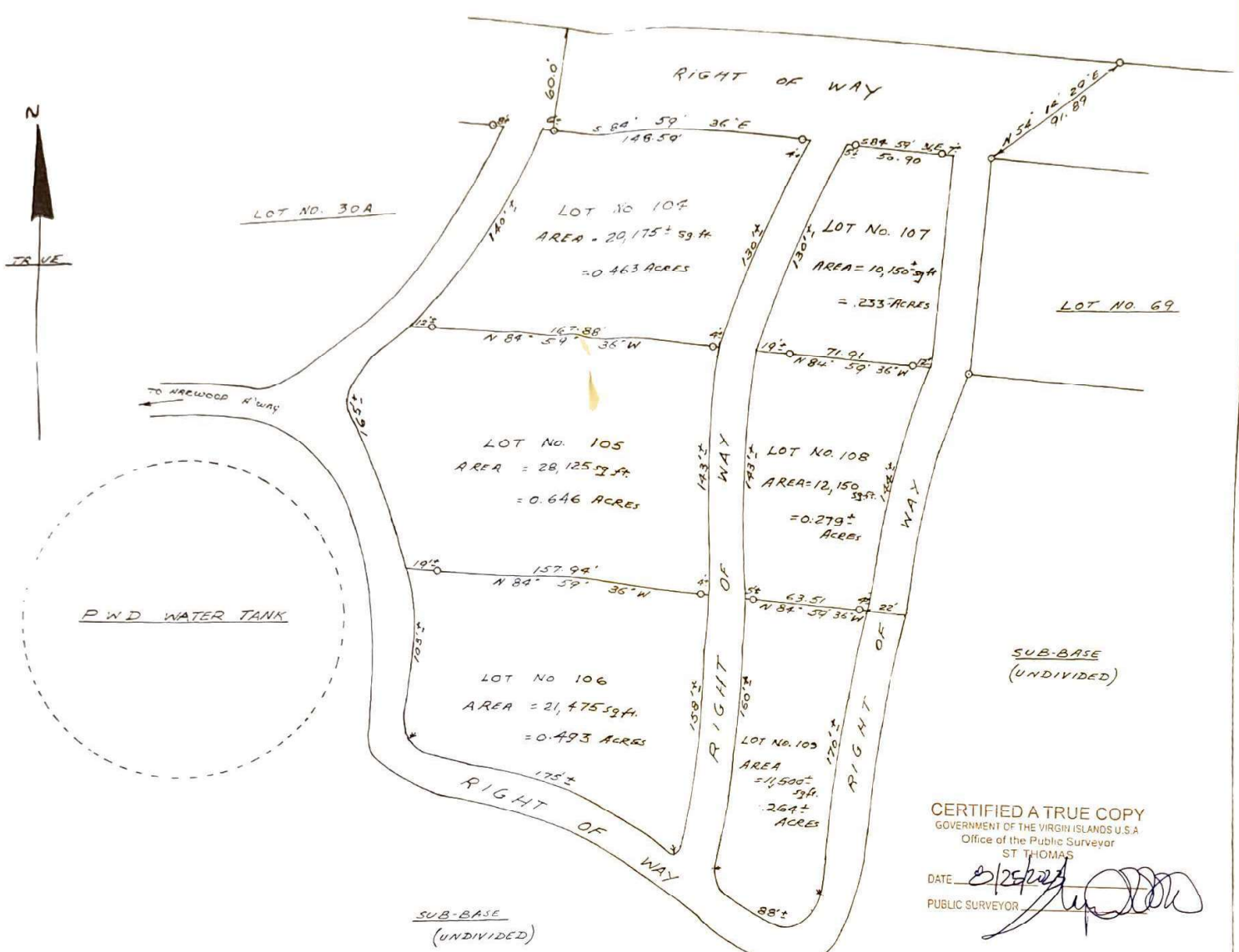


NISKY MISSION



CERTIFIED A TRUE COPY  
 GOVERNMENT OF THE VIRGIN ISLANDS U.S.A.  
 Office of the Public Surveyor  
 ST THOMAS

DATE: *3-20-70*  
 PUBLIC SURVEYOR: *[Signature]*

THIS PLAN IS SUPERSEDED BY P.W.D. No. D3-371-T81

PLAN SHOWING LOTS Nos 104 to 109		
SUB-BASE, ST THOMAS V. Is.		
SCALE 1" = 50'	DATE 3-20-70	REVISED
GOVERNMENT OF THE UNITED STATES VIRGIN ISLANDS CHARLOTTE AMALIE ST. THOMAS VIRGIN ISLANDS-PORT AUTHORITY		
SUBMITTED:	APPROVED: <i>[Signature]</i>	Sheet No.
CHIEF ENGINEER	EXECUTIVE DIRECTOR	
DRAWN:	FILE NO. B9-277-T70	of sheets