

QUITCLAIM DEED

This QUITCLAIM DEED, made this 9th day of February, 1967, by and between the United States of America, acting by and through the Secretary of the Interior, and the Government of the Virgin Islands,

WITNESSETH:

WHEREAS, the Government of the Virgin Islands has requested the Secretary of the Interior to convey the lands hereinafter described to the Government of the Virgin Islands, pursuant to the Territorial Submerged Lands Act, 77 Stat. 338, 48 U.S.C. 1701 (1963), for specific economic development purposes; and

WHEREAS, pursuant to Section 1(c) of the said Act, on December 13, 1966, an explanatory statement was submitted to the Committees on Interior and Insular Affairs of the Senate and House of Representatives of the United States Congress; and

WHEREAS, by letter dated January 5, 1967, the Chairman of the House Committee on Interior and Insular Affairs and by letter dated December 16, 1966, the Chairman of the Senate Committee on Interior and Insular Affairs have informed the Secretary of the Interior that they wish to take no action with respect to the proposed conveyance; and

WHEREAS, notice of this conveyance of the lands hereinafter described has been published in the Virgin Islands in the manner and form required by Section 1(c) of the said Act;

NOW, THEREFORE, the United States does hereby transfer and convey unto the Government of the Virgin Islands, in accordance with and subject to the said Act, and the terms and conditions hereof, all its right, title and interest in the following described lands:

TRACT (4) SECTION (1) FORMER NAVAL
SUBMARINE BASE, ST. THOMAS, V.I.

Reference P.W. Drawing No. A3-97-766.

Beginning at point "A" located North 7 degrees 00 minutes West,
a distance of 255.0 feet, from the northwest corner of the tender
pier, the line runs:

North 24 degrees 30 minutes East, a distance of 600.0 feet, to a point; thence
North 1 degree 45 minutes West, a distance of 100.0 feet, to a point; thence
South 58 degrees 30 minutes East, a distance of 150.0 feet, to a point; thence
North 34 degrees 00 minutes East, a distance of 200.0 feet, to a point; thence
North 56 degrees 00 minutes East, a distance of 175.0 feet, to a point; thence
South 33 degrees 30 minutes West, a distance of 640.0 feet, to a point; thence
South 49 degrees 25 minutes East, a distance of 175.0 feet, to a point; thence
South 26 degrees 37 minutes West, a distance of 77.8 feet, to a point; thence
North 58 degrees 50 minutes West, a distance of 170.0 feet, to a point; thence
South 34 degrees 15 minutes West, a distance of 400.0 feet, to a point; thence
South 56 degrees 30 minutes East, a distance of 100.0 feet, to a point; thence
South 41 degrees 30 minutes West, a distance of 55.0 feet, to a point; thence
North 59 degrees 10 minutes West, a distance of 100.0 feet, to the point
of beginning.

The area is 2.80 acres
All distances are in U.S. Feet.

TRACT (4) SECTION (2) FORMER NAVAL
SUBMARINE BASE, ST. THOMAS, V.I.

Beginning at Point "X" located on the shoreline and being the southeast
corner of tract 3 (U.D.T. training facilities) the line runs:

South 37 degrees 18 minutes West, a distance of 55.0 feet to a point; thence
North 52 degrees 40 minutes West, a distance of 282.5 feet, to a point; thence
South 37 degrees 18 minutes West, a distance of 110.0 feet, to a point; thence
North 30 degrees 00 minutes West, a distance of 30.0 feet, to a point; thence

North 37 degrees 18 minutes East, a distance of 370.0 feet, to a point; thence
North 52 degrees 42 minutes West, a distance of 115.0 feet, to a point; thence
South 63 degrees 18 minutes West, a distance of 156.0 feet, to a point; thence
South 60 degrees 38 minutes West, a distance of 30.0 feet, to a point; thence
North 43 degrees 20 minutes East, a distance of 60.0 feet, to a point; thence
North 63 degrees 30 minutes East, a distance of 190.0 feet, to a point; thence
North 69 degrees 40 minutes East, a distance of 250.0 feet, to a point; thence
North 81 degrees 10 minutes East, a distance of 200.0 feet, to a point; thence
South 86 degrees 05 minutes East, a distance of 190.0 feet, to a point; thence
South 71 degrees 00 minutes East, a distance of 110.0 feet, to a point; thence
North 86 degrees 10 minutes East, a distance of 95.0 feet, to a point; thence
South 37 degrees 18 minutes West, a distance of 50.0 feet, to a point; thence
Along the shore line passing pier "C" and pier "B", to the point of
beginning.

The area is 6.47 acres
All distances are in U.S. feet

TRACT (4) SECTION (3) FORMER NAVAL
SUBMARINE BASE, ST. THOMAS, V.I.

Beginning at point "C" located North 85 degrees 30 minutes East, a
distance of 760.0 feet, from V.I. Corporation, Monument 2, the line runs:

North 51 degrees 15 minutes East, a distance of 90.0 feet, to a point; thence
North 37 degrees 00 minutes East, a distance of 110.0 feet, to a point; thence
North 77 degrees 00 minutes East, a distance of 45.0 feet, to a point; thence
South 48 degrees 40 minutes East, a distance of 130.0 feet, to a point; thence
South 12 degrees 00 minutes East, a distance of 90.0 feet, to a point; thence
South 28 degrees 30 minutes West, a distance of 340.0 feet, to a point; thence
South 40 degrees 00 minutes West, a distance of 125.0 feet, to a point; thence

South 18 degrees 00 minutes West, a distance of 110.0 feet, to a point; thence
South 4 degrees 05 minutes West, a distance of 170.0 feet, to a point; thence
South 47 degrees 30 minutes West, a distance of 60.0 feet, to a point on
the shore line; thence

Along the shoreline in a general northerly direction, to the point of
beginning.

The area is 1.54 acres
All distances are in U.S. Feet

TRACT (4) SECTION (4) FORMER NAVAL
SUBMARINE BASE, ST. THOMAS, V.I.

Reference: Y & D Drawing No. 839 062 also P.W. Drawing No. Ap-97-766.

Beginning at a point located North 87 degrees 00 minutes East, a
distance of 100.0 feet, from V.I. Corp. Monument 2, the line runs:

South 75 degrees 45 minutes West, a distance of 100.0 feet, to a point; thence
South 8 degrees 45 minutes West, a distance of 280.0 feet, to a point; thence
South 17 degrees 00 minutes East, a distance of 170.0 feet, to a point; thence
South 61 degrees 50 minutes East, a distance of 100.0 feet, to a point; thence
South 49 degrees 15 minutes East, a distance of 150.0 feet, to a point; thence
South 84 degrees 20 minutes East, a distance of 95.0 feet, to a point; thence
South 3 degrees 45 minutes West, a distance of 135.0 feet, to a point; thence
South 16 degrees 30 minutes West, a distance of 140.0 feet, to a point; thence
North 29 degrees 15 minutes West, a distance of 130.0 feet, to a point; thence
North 5 degrees 15 minutes West, a distance of 120.0 feet, to a point; thence
North 37 degrees 00 minutes West, a distance of 95.0 feet, to a point; thence
North 71 degrees 50 minutes West, a distance of 145.0 feet, to a point; thence
North 17 degrees 45 minutes West, a distance of 100.0 feet, to a point; thence
North 33 degrees 45 minutes West, a distance of 60.0 feet, to a point; thence

North 9 degrees 45 minutes East, a distance of 160.0 feet, to a point; thence
North 12 degrees 15 minutes West, a distance of 95.0 feet, to a point; thence
North 20 degrees 00 minutes East, a distance of 130.0 feet, to a point; thence
North 49 degrees 45 minutes East, a distance of 50.0 feet, to a point; thence
South 79 degrees 20 minutes East, a distance of 87.3 feet, to the point
of beginning.

The area is 1.37 acres
All distances are in U.S. feet

As required by Section 1(e) of the Territorial Submerged
Lands Act, this conveyance is made without the power or right to
reconvey title to the subject lands.

The United States excepts and reserves all deposits of
oil, gas, and other minerals, but the term "minerals" shall not
include sand, gravel, or coral.

TO HAVE AND TO HOLD the same unto and to the use of the
Government of the Virgin Islands forever.

Under

IN WITNESS WHEREOF, the Secretary of the Interior has
signed and sealed this deed in behalf of the United States on the
day and year first above written.

UNITED STATES OF AMERICA

FEB 9 - 1959

Under

By Charles F. Lee
Secretary of the Interior

In the presence of:

Wm. L. Hunter
Martha L. Lawrence

ACKNOWLEDGMENT

DISTRICT OF COLUMBIA
CITY OF WASHINGTON

ss

On this 27th day of February
in the year 1967, before me Mary M. Brown, a Notary
Public, personally appeared Charles F. Luce, who acknowledged himself
to be the Under Secretary of the Department of the Interior, and that
he, as such officer, being authorized so to do, executed the foregoing

ins

Serial A 45799

DISTRICT OF COLUMBIA

In

To All Whom These Presents Shall Come, Greeting:

I Certify that MARY M. BROWN
whose name is subscribed to the accompanying instrument, was at the time of signing the same a Notary Public
in and for the District of Columbia, and duly commissioned and authorized by the laws of said District of Colum
bia to take the acknowledgment and proof of deeds or conveyances of lands, tenements, or hereditaments, and oth
er instruments in writing to be recorded in said District, and to administer oaths; and that I am well acquainted wit
h the handwriting of said Notary Public and verily believe that the signature and impression of seal thereon ar
genuine, after comparison with signature and impression of seal on file in this office.

In Witness Whereof, the Secretary to the Board of Commissioners of the District of Columbia, has hereunto
caused the Seal of the District of Columbia to be affixed at the City of Washington, D.C., this

20 day of FEBRUARY 1967

(D.C. SEAL)

Pauline Powell
Secretary Board of Commissioners

MISS, NOTARY PUBLIC SECTION

RECEIVED

1967 MAR 18 AM 11 45

OFFICE OF
THE
RECORDER OF DEEDS

Recorded and entered in the Recorder's Book for the District
of St. Thomas and St. John, Virgin Islands of the U. S. I.
Protocol BT Page 65, Sub No 2499 and noted in the Real
Estate Register for

OFFICE, Auxiliary 17, Page 295

April 18, 1967
Cliff Kelt

AGREEMENT
TO
QUITCLAIM DEED

This AGREEMENT was this 13th day of April, 1967,
by and between the United States of America, acting through the Under
Secretary of the Interior, and the Government of the Virgin Islands,
acting through the Governor of the Virgin Islands,

WITNESSETH:

WITNESAS, by Gutielain deed dated February 9, 1967, a copy
of which is attached hereto and made a part hereof, the United States
of America acting through the Secretary of the Interior, conveyed
the lands described therein to the Government of the Virgin Islands
pursuant to the Territorial Submerged Lands Act, 77 Stat. 338,
42 U.S.C.; and

WITNESAS, the Government of the Virgin Islands wishes to
transfer certain of the lands thus conveyed to it to the Virgin
Islands Water and Power Authority; and

WITNESAS, pursuant to section 1(c) of the said Act, on
March 31, 1967, an explanatory statement was submitted to the
Committees on Interior and Insular Affairs of the Senate and House
of Representatives of the United States Congress; and

WITNESAS, by letter dated April 10, 1967, the Chairman of
the House Committee on Interior and Insular Affairs and by letter
dated April 10, 1967, the Chairman of the Senate Committee on Interior
and Insular Affairs have informed the Secretary of the Interior that
their respective Committees have no objections to the proposed transfer;
and

41020
7/9/67

WHEREAS, notice of proposal to amend the February 9, 1967, Quitclaim deed by adding language permitting such transfer has been published in the Virgin Islands in the manner and form required by section 1(c) of said Act;

NOW, THEREFORE, in consideration of the premises it is mutually agreed that the quitclaim deed dated February 9, 1967, by and between the United States of America (grantor), acting through the Secretary of the Interior, and the Government of the Virgin Islands (grantee) be and it hereby is amended by adding thereto after the paragraph at page 5 thereof which reads as follows:

As required by section 1(e) of the Territorial Submerged Lands Act this conveyance is made without the power or right to reconvey the subject lands.

the following proviso:

Provided, however, that the Government of the Virgin Islands may convey to the Virgin Islands Water and Power Authority in fee simple absolute that portion of the former naval submarine base known as Tract (4), Section (4) as more particularly described in Public Works Drawing No. AJ-97-266 and which metes and bounds description has been published as aforesaid and that such conveyance shall be without cost to the Virgin Islands Water and Power Authority.

This AMENDMENT to the quitclaim deed will be recorded by the Government of the Virgin Islands at the same time and together with its deed of conveyance to the Virgin Islands Water and Power Authority.

IN WITNESS WHEREOF the United States of America, acting through the Secretary of the Interior, and the Government of the

Virgin Islands, acting through the Governor of the Virgin Islands, have affixed their hands and seals on the year and day first above written.

UNITED STATES OF AMERICA

In the presence of:
Edwin B. Taylor
C. Brewster Chapman Jr.

By Charles F. Luce
Under Secretary of the Interior

GOVERNMENT OF THE VIRGIN ISLANDS

By John M. Lawrence
Governor

In the presence of:
Lynd L. King
Johnston Jackson

ACKNOWLEDGMENT

DISTRICT OF COLUMBIA }
CITY OF WASHINGTON } ss

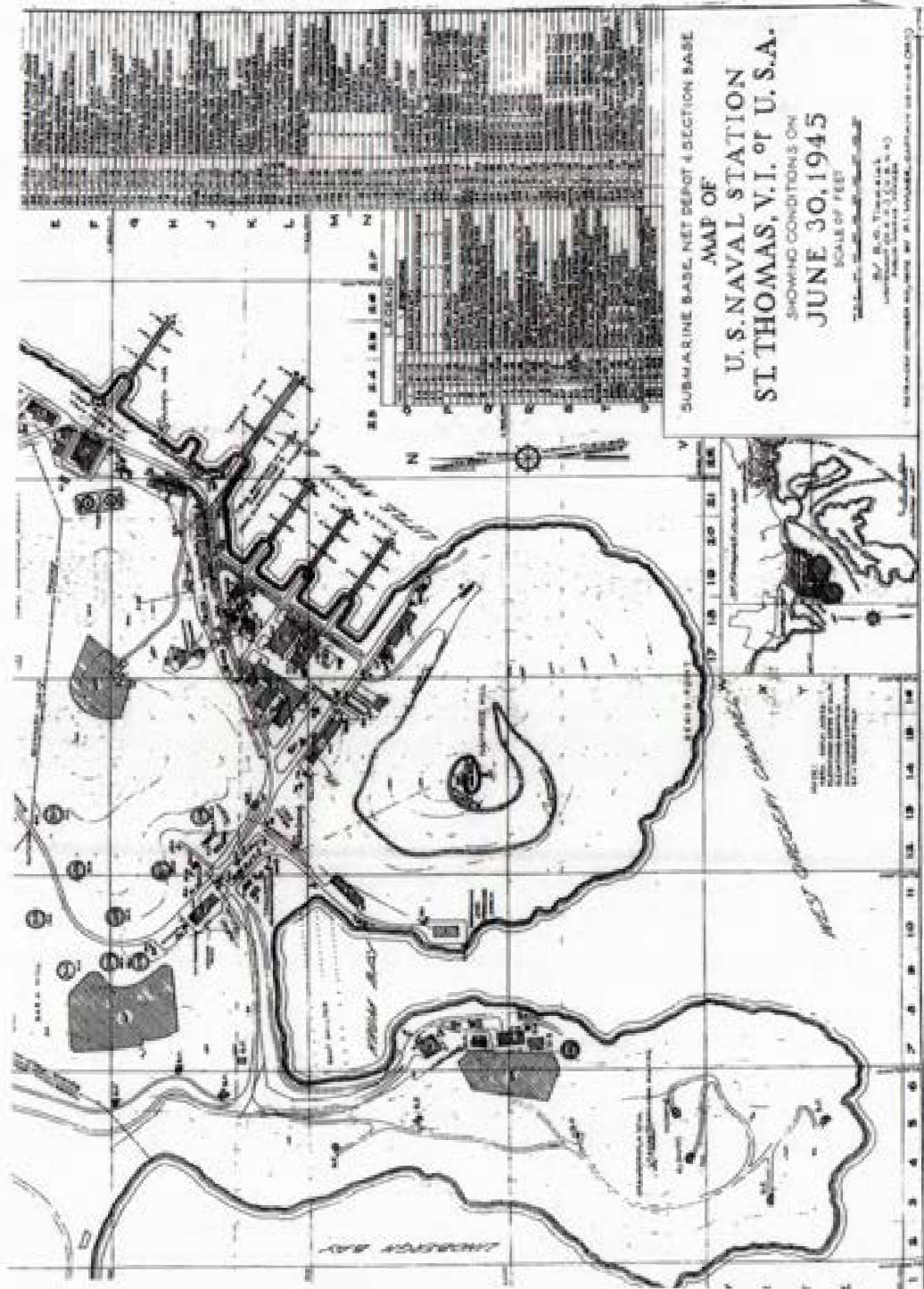
On this 13th day of April, in the year 1967, before me Bernice O. Heitt, a Notary Public, personally appeared Charles F. Luce, who acknowledged himself to be the Under Secretary of the Department of the Interior, and that he, as such officer, being authorized so to do, executed the foregoing instrument for the United States of America.

In Witness Whereof I hereunto set my hand and seal.

Bernice O. Heitt
Notary Public
My Commission Expires February 24, 1968

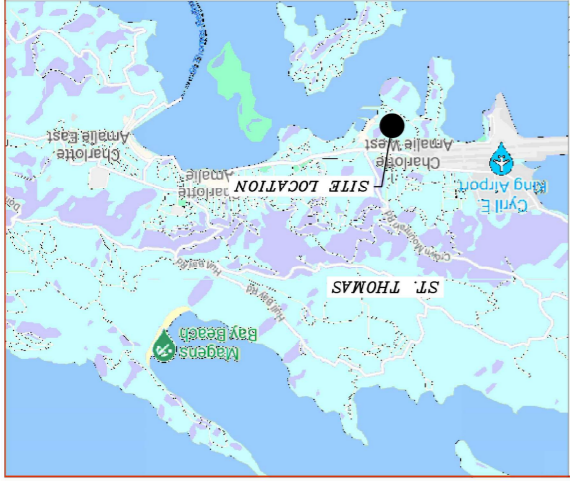
2-000000

NAVY, KERO BAY BRK



SUBMARINE BASE, NET DEPOT & SECTION BASE
 MAP OF
U. S. NAVAL STATION
ST. THOMAS, V. I. of U. S. A.
 SHOWING CONDITIONS ON
JUNE 30, 1945
 SCALE OF FEET
 1" = 100'

Prepared under authority of the U. S. NAVAL DISTRICT OFFICE, ST. THOMAS, V. I.



SITE LOCATION MAP
N.T.S.

PLOTTED SCALE: 1" = 40'
CONTOUR INTERVAL: 2' AND 10'

- NOTE:
1. SURVEYED BY GPS
 2. REFER TO DRAWING NO. XXXX
 3. ZONING CLASSIFICATION: (P)
 4. BOUNDPOST FOUND
 5. IRON PIN FOUND

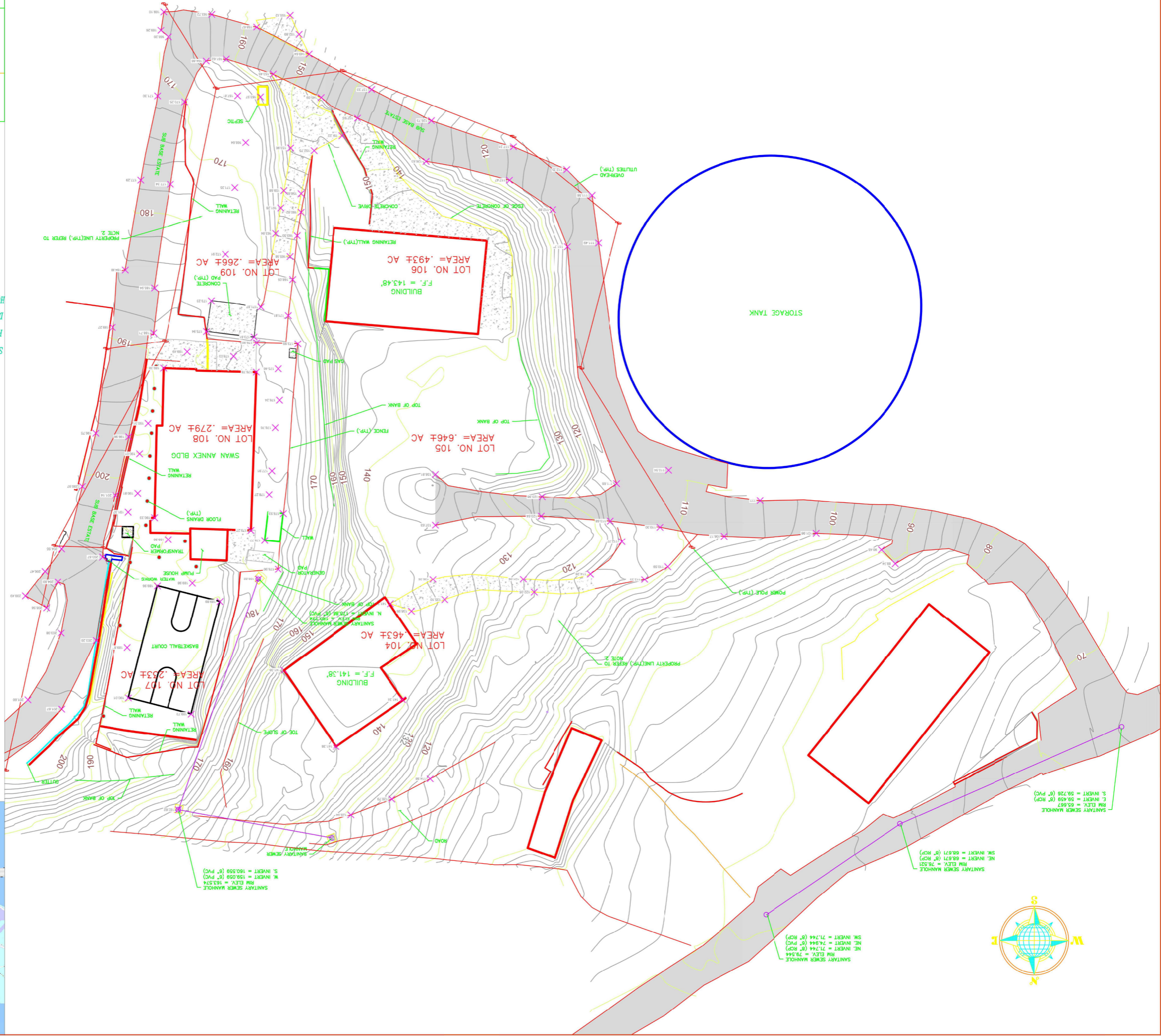
SUBJECT PROPERTY APPEARS TO FALL WITHIN P.R.M. DESIGNATION: X
PER FLOOD INSURANCE RATE MAP 780000025G
D.P.N.R. ZONING DISTRICT: P
HORIZONTAL AND VERTICAL DATUM: STATE PLANE, NAD 83, PR/VI - 5200; NAD 88

- GENERAL NOTES:
1. ABOVE GROUND UTILITIES WHERE VISIBLE HAVE BEEN LOCATED. HOWEVER, ENGRAVEMENTS, EASEMENTS, AND UNDERGROUND UTILITIES HAVE NOT BEEN DETERMINED. CONTRACTOR SHALL FIELD VERIFY PRIOR TO CONSTRUCTION.
 2. THE PROPERTY LINES ARE APPROXIMATE AND SHALL BE CONFIRMED BY THE CONTRACTOR PRIOR TO INITIATING CONSTRUCTION.

TOPOGRAPHIC SURVEY OF
SWANN ANNEX LOTS 104, 105 & 106
CHARLOTTE AMALIE WEST
ST. THOMAS, U.S. VIRGIN ISLANDS

a.e.i.
ANTILLEAN ENGINEERS INC.
18 EAST CLIFTON HILL, KINGSTON, ST. JOHN, N.S.
PO BOX 3029 KINGSTON, ST. JOHN, N.S. 00801
340-778-8828

DATE: 09/12/23 SCALE: SURVEYED BY: DRAWN BY: JR
DWG. No.: 60.3
APPROVED BY: 903-E



SANITARY SEWER MANHOLE
RIM ELEV. = 79.544
N.E. INVERT = 71.744 (8" RCP)
S.W. INVERT = 71.744 (8" RCP)

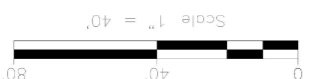
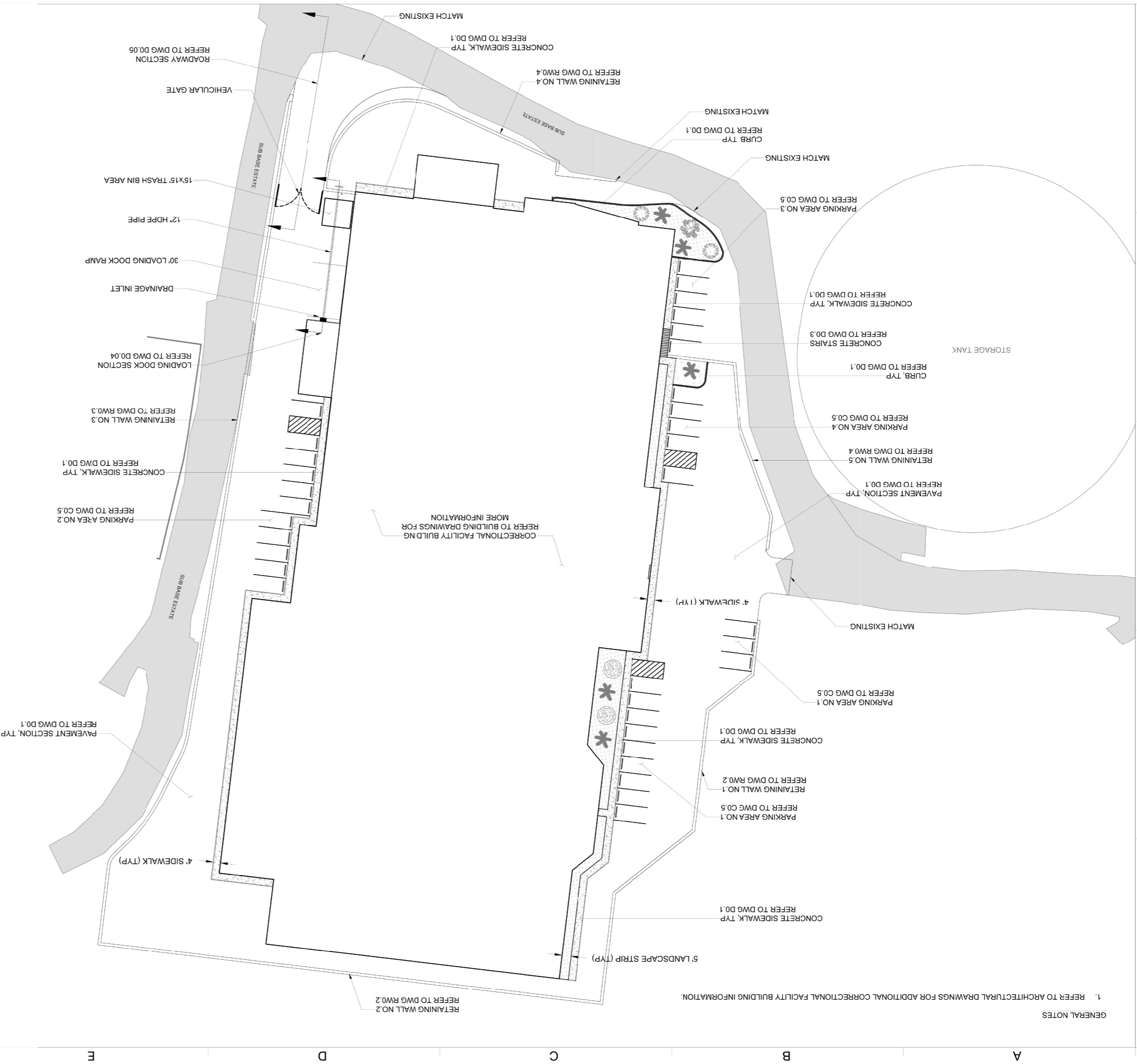
SANITARY SEWER MANHOLE
RIM ELEV. = 76.521
N.E. INVERT = 68.671 (8" RCP)
S.W. INVERT = 68.671 (8" RCP)

SANITARY SEWER MANHOLE
RIM ELEV. = 59.687
E. INVERT = 59.459 (8" RCP)
S. INVERT = 59.728 (8" PVC)

SANITARY SEWER MANHOLE
RIM ELEV. = 163.574
N.W. INVERT = 150.059 (8" PVC)
S. INVERT = 160.559 (8" PVC)

SANITARY SEWER MANHOLE
RIM ELEV. = 141.38'
N. INVERT = 128.825 (8" PVC)
S. INVERT = 128.825 (8" PVC)

GENERAL NOTES
1. REFER TO ARCHITECTURAL DRAWINGS FOR ADDITIONAL CORRECTIONAL FACILITY BUILDING INFORMATION.



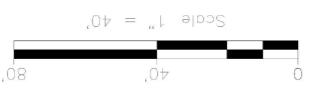
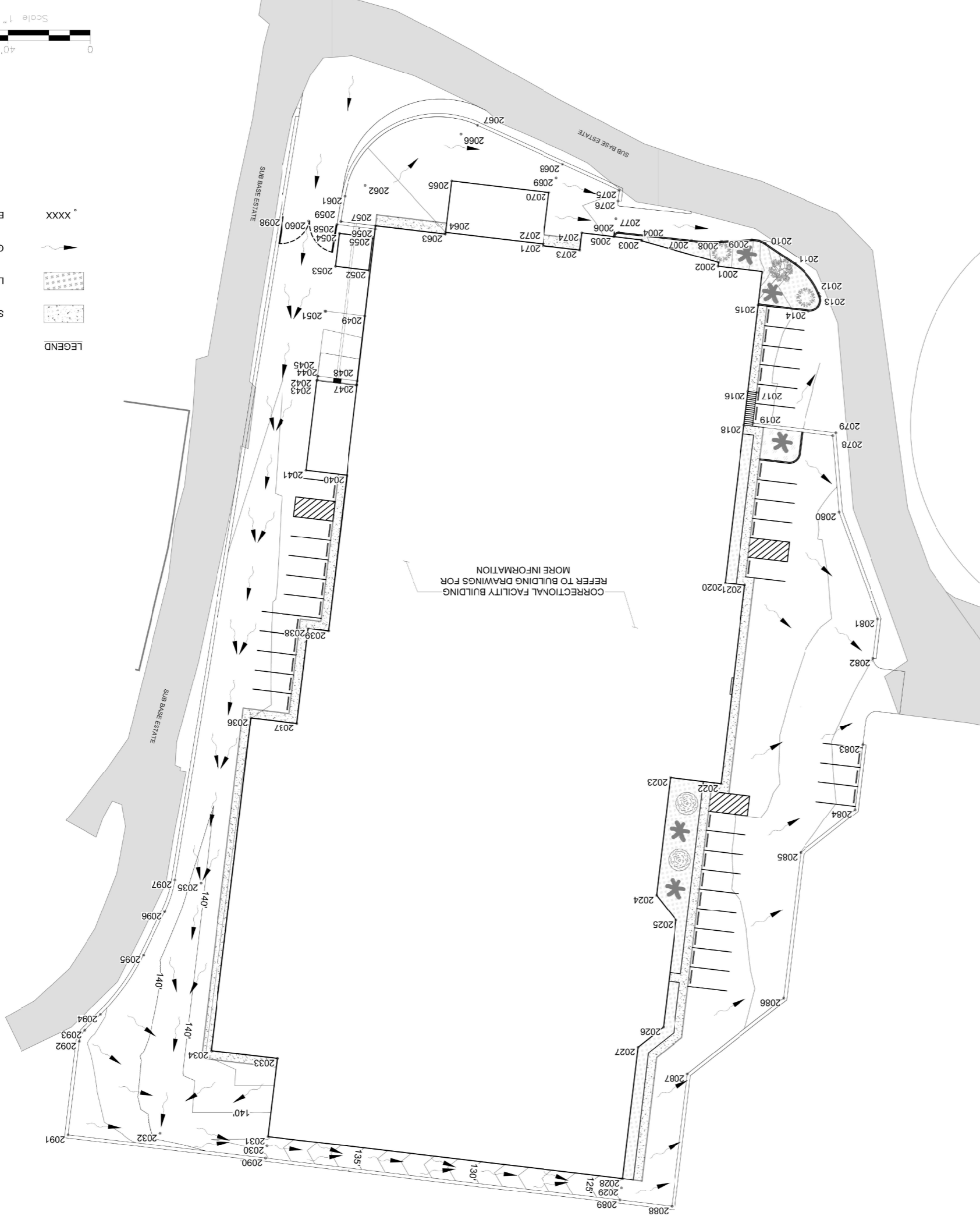
LEGEND

- LANDSCAPE AREA
- SIDEWALK AREA



POINT #	ELEVATION	NORTHING	EASTING
2000	117.250	840363.3532	116732.4073
2001	119.750	840359.1566	116752.4618
2002	119.750	840349.1655	116787.8522
2003	122.250	840348.8107	116787.8101
2004	122.250	840347.2943	116780.6400
2005	122.750	840345.3009	116798.4062
2006	122.750	840348.9973	116784.8729
2007	120.750	840348.9973	116776.8729
2008	119.500	840349.3971	116751.1987
2009	118.250	840348.6719	116737.0835
2010	116.250	840350.3967	116730.9367
2011	113.500	840359.6614	116717.3498
2012	113.250	840373.3269	116706.3882
2013	113.250	840374.6321	116705.8673
2014	113.750	840381.4509	116711.0993
2015	114.500	840378.7110	116734.2278
2016	114.500	840418.3503	116738.9267
2017	114.500	840418.8211	116734.9545
2018	124.000	840433.8252	116740.7611
2019	114.500	840432.8090	116736.5882
2020	124.000	840506.3162	116749.3542
2021	124.000	840507.3739	116740.4316
2022	124.000	840598.4588	116751.2288
2023	124.000	840595.6841	116774.6363
2024	124.000	840649.4827	116778.0148
2025	124.000	840660.9040	116772.0143
2026	124.000	840710.0590	116777.8412
2027	124.000	840719.2499	116789.5042
2028	124.000	840779.5549	116796.6528
2029	123.590	840783.8016	116797.1562
2030	138.740	840764.5101	116796.0050
2031	139.120	840760.2509	116795.9501
2032	139.240	840758.7309	116808.7901
2033	142.000	840724.4270	116795.3800
2034	141.250	840643.9003	116790.1171
2035	139.820	840643.9003	116790.1171
2036	141.000	840568.0647	116796.2682
2037	141.500	840570.5710	116794.0677
2038	141.750	840527.2728	116794.9351
2039	142.000	840528.3786	116793.16061
2040	142.000	840456.7376	116792.3137
2041	141.750	840454.5179	116794.18457
2042	142.000	840413.3061	116793.9636
2043	139.000	840413.0873	116793.6859
2044	142.000	840411.3200	116793.7281
2045	139.000	840411.3495	116793.4799
2046	142.000	840415.4770	116791.6506
2047	139.000	840413.4909	116791.84151
2048	139.000	840413.4909	116791.84151
2049	142.000	840383.6995	1167914.8835

POINT #	ELEVATION	NORTHING	EASTING
2050	141.750	840381.5580	1167932.9483
2051	141.750	840381.5286	1167933.1965
2052	142.000	840362.8023	1167913.0457
2053	141.750	840360.9742	1167928.4668
2054	141.750	840345.8225	1167926.6707
2055	142.000	840347.6505	1167911.2496
2056	142.000	840343.7975	1167910.1536
2057	142.000	840342.3079	1167909.9770
2058	141.620	840341.7068	1167927.7907
2059	142.000	840340.4050	1167926.0297
2060	141.360	840340.1733	1167940.7268
2061	142.000	840328.7358	1167924.1333
2062	123.750	840323.7297	1167914.7351
2063	142.000	840346.1189	1167877.7352
2064	124.000	840345.3370	1167877.7352
2065	123.750	840321.7211	1167874.9357
2066	123.500	840300.2719	1167870.6964
2067	124.000	840296.1885	1167863.0303
2068	123.250	840314.0830	1167824.0965
2069	123.000	840320.3632	1167826.9830
2070	123.750	840327.0085	1167830.3314
2071	124.000	840350.6244	1167833.1308
2072	124.000	840351.4054	1167833.2234
2073	124.000	840353.4131	1167816.2870
2074	123.500	840345.5434	1167815.3541
2075	123.000	840325.9412	1167798.1088
2076	122.750	840330.9064	1167798.6974
2077	122.250	840339.1251	1167799.6716
2078	123.500	840438.6513	1167700.0203
2079	112.000	840437.3061	1167698.6255
2080	122.750	840473.7288	1167697.1456
2081	122.500	840522.7870	1167679.5665
2082	122.000	840540.7401	1167681.6932
2083	121.410	840580.4624	1167688.3987
2084	121.670	840610.1712	1167689.9181
2085	121.990	840629.8035	1167714.8268
2086	122.660	840696.6915	1167722.6381
2087	123.500	840731.4883	1167766.7869
2088	123.500	840792.3106	1167773.9968
2089	124.000	840789.4854	1167797.8300
2090	139.120	840770.1813	1167960.6773
2091	142.000	840759.4583	1168051.1355
2092	141.160	840716.5486	1168046.0524
2093	141.210	840711.4977	1168043.5811
2094	141.110	840704.2721	1168036.2574
2095	140.240	840676.9205	1168016.5151
2096	140.240	840657.0043	1168006.6908
2097	140.240	840642.4873	1168002.0449
2098	141.780	840338.7594	1167952.6545

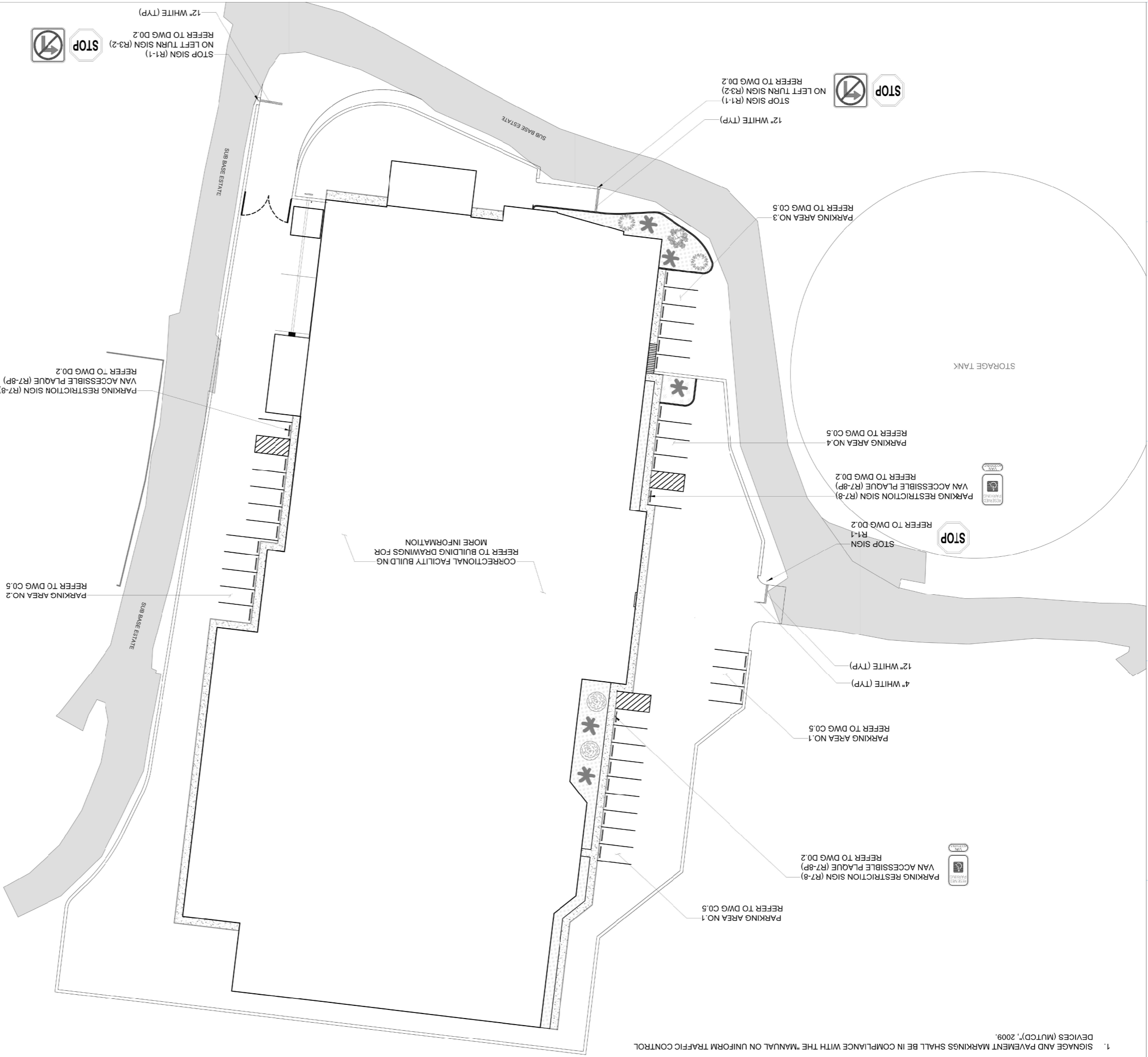


LEGEND

- XXXXX ELEVATION POINT
- GRAVITY FLOW
- LANDSCAPE AREA
- SIDEWALK AREA



GENERAL NOTES
1. SIGNAGE AND PAVEMENT MARKINGS SHALL BE IN COMPLIANCE WITH THE MANUAL ON UNIFORM TRAFFIC CONTROL DEVICES (MUTCD), 2009.



STOP SIGN (R1-1)
NO LEFT TURN SIGN (R3-2)
REFER TO DWG D0.2



STOP SIGN (R1-1)
NO LEFT TURN SIGN (R3-2)
REFER TO DWG D0.2



STOP SIGN
R1-1
REFER TO DWG D0.2



PARKING RESTRICTION SIGN (R7-8)
VAN ACCESSIBLE PLAQUE (R7-8P)
REFER TO DWG D0.2

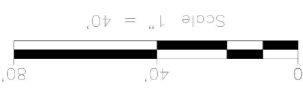


PARKING RESTRICTION SIGN (R7-8)
VAN ACCESSIBLE PLAQUE (R7-8P)
REFER TO DWG D0.2



PARKING RESTRICTION SIGN (R7-8)
VAN ACCESSIBLE PLAQUE (R7-8P)
REFER TO DWG D0.2

CORRECTIONAL FACILITY BUILDING
REFER TO BUILDING DRAWINGS FOR
MORE INFORMATION



LEGEND



SIDEWALK AREA



LANDSCAPE AREA



USVI BOC

DOCUMENTS FOR USVI BOC SWAN ANNEX

ST. THOMAS, US VIRGIN ISLANDS

CONSTRUCTION DOCUMENTS

INDEX OF DRAWINGS

29 NOVEMBER 2023



VICINITY MAP



PROJECT TEAM

- OWNER
BUREAU OF CORRECTIONS
- OWNER REPRESENTATIVE
WITT O'BRIENS
THE STRATEGY GROUP
- DESIGN BUILD TEAM
 - DR. GROUP
 - ARCHITECTURAL INTERIOR
 - MECHANICAL ELECTRICAL PLUMBING
 - R&N SYSTEMS DESIGN SECURITY ELECTRONICS
- ANTILLEAN ENGINEERS INC.
CIVIL ENGINEERING LANDSCAPE
- HALLIDAY ASSOCIATES
FOOD SERVICE

SITE SYMBOLS

---	PROPERTY LINE	□	AREAINLET
---	LOT LINE	□	CURBINLET
---	EASEMENT LINE	○	MANHOLE
---	BUILDING LINE EXISTING	○	HEAD WALL
---	BUILDING LINE NEW WOOD	○	FLARED END
---	OPENING AND STRUCTURAL STOOP	○	CLEAN OUT
---	PRIMARY CONTOUR EXISTING	○	CAP
---	PRIMARY CONTOUR NEW	○	THRUST BLOCK
---	SECONDARY CONTOUR EXISTING	○	VALVE
---	SECONDARY CONTOUR NEW	○	POSTINDICATOR VALVE
---	SCOPE PAVEMENT	○	REDUCER
---	DRAINAGE DITCH OR SWALE	○	FIRE HYDRANT
---	STREET CENTERLINE	○	POWER POLE
---	CURB THICKENED EDGE	○	LIGHT POLE
---	CURB EXISTING	○	TELEPHONE MANHOLE
---	CURB NEW	○	TELEPHONE BOX
---	PAVING CONTRACTION JOINT	○	SPRINKLER HEAD 360°
---	PAVING KEYED CONSTRUCTION JOINT	○	SPRINKLER HEAD 270°
---	PAVING TIE CONSTRUCTION JOINT	○	SPRINKLER HEAD 180°
---	PAVING EXPANSION JOINT	○	SPRINKLER HEAD 90°
---	FENCE SECURITY	○	QUICK COUPLING
---	FENCE BARBED WIRE	○	TREE EXISTING DECIDUOUS
---	FENCE CHAIN LINK	○	TREE EXISTING CONIFER
---	FENCE WOOD	○	SHADE TREE
---	SEED LIMIT	○	ORNAMENTAL TREE
---	FOUNDATION DRAIN, NONPERFORATED	○	DECIDUOUS TREE
---	FOUNDATION DRAIN, PERFORATED	○	SHRUB
---	SUBSOIL, PERFORATED	○	CLIPPED SHRUB
---	SANITARY SEWER	○	
---	FORCE MAIN	○	
---	WATER	○	
---	FIRE	○	
---	GAS	○	
---	HPS	○	
---	MPS	○	
---	LPS	○	
---	UNDERGROUND ELECTROPHONE	○	
---	UNDERHEAD POWER	○	
---	LAWN SPRINKLER HOT LINE	○	
---	LAWN SPRINKLER LATERAL	○	



PROPERTY LINE, TYP.

TOTAL SITE AREA: 2.38 ACRES

EROSION AND SEDIMENT CONTROL NOTES

BEST MANAGEMENT PRACTICES

GENERAL EROSION CONTROL BMPs SHALL BE EMPLOYED TO MINIMIZE SOIL EROSION AND POTENTIAL LAKE SLOPE CAVENS. WHILE THE VARIOUS TECHNIQUES REQUIRED WILL BE SITE AND PLAN SPECIFIC, THEY SHOULD BE EMPLOYED AS SOON AS POSSIBLE DURING CONSTRUCTION ACTIVITIES. CLEARED SITE DEVELOPMENT AREAS NOT CONTINUALLY SCHEDULED FOR CONSTRUCTION ACTIVITIES SHALL BE COVERED WITH HAY OR OVERSEEDED AND PERIODICALLY WATERED SUFFICIENT TO STABILIZE THE TEMPORARY GROUNDCOVER.

ALL GRASS SLOPES CONSTRUCTED STEEPER THAN 4H:1V SHALL BE SODDED AS SOON AS PRACTICAL AFTER THEIR CONSTRUCTION.

SOD SHALL BE PLACED FOR A 3-FOOT WIDE STRIP ADJOINING ALL CURBING AND AROUND ALL INLETS. SOD SHALL BE PLACED BEFORE SILT BARRIERS, ARE INSTALLED.

WHERE REQUIRED TO PREVENT EROSION FROM SHEET FLOW ACROSS BARE GROUND FROM ENTERING A LAKE OR SWALE, A TEMPORARY SEDIMENT SUMP SHALL BE CONSTRUCTED.

THE TEMPORARY SEDIMENT SUMP SHALL REMAIN IN PLACE UNTIL VEGETATION IS ESTABLISHED ON THE GROUND DRAINING TO THE

PROTECTION OF SURFACE WATER QUALITY DURING AND AFTER CONSTRUCTION:

SURFACE WATER QUALITY SHALL BE MAINTAINED BY EMPLOYING THE FOLLOWING BMPs IN THE CONSTRUCTION PLANNING AND CONSTRUCTION OF ALL IMPROVEMENTS, WHERE PRACTICAL, STORMWATER SHALL BE CONVEYED BY SWALES. SWALES SHALL BE CONSTRUCTED AS SHOWN ON PLANS.

SEDIMENT CONTROL NOTES AT CONSTRUCTION STAGE

CONTRACTOR SHALL CONSTRUCT DITCHES, SWALES, BERMS AND SEDIMENTATION POOL FOR CONTROLLING EROSION AND SEDIMENT POLLUTION DURING CONSTRUCTION.

NO FILL SHALL BE LEFT UNESTABLISHED MORE THAN THIRTY DAYS, NOR STORED WITHOUT COMPACTION.

SEDIMENT CONTROL STRUCTURES SHALL BE INSPECTED AND REPAIRED AS NECESSARY TO ASSURE A SATISFACTORY PERFORMANCE DURING CONSTRUCTION.

NO FILL SHALL BE STORED IN PROJECT FOR MORE THAN SEVEN DAYS.

ALL RUN-OFF WATER DURING CONSTRUCTION STAGE SHALL ENTER THE SEDIMENT POOLS BEFORE LEAVING THE PROJECT.

ALL TRUCKS AND EQUIPMENT WHEELS SHALL BE CLEANED AT CLEANING AREA BEFORE LEAVING THE PROJECT.

THE PROJECT SHALL HAVE ONE EXIT ONLY, DURING AND AFTER CONSTRUCTION.

ALL PERMANENT SLOPES SHALL BE SODDED AS SOON AS POSSIBLE.

CONTRACTOR SHALL SPRAY WITH WATER (TWICE DAILY) ALL BARED GROUND THROUGHOUT PROJECT.

ALL SEDIMENT PREVENTIVE WORKS SHALL BE PERFORMED PRIOR TO EARTH MOVEMENT ACTIVITIES.

FOR ADDITIONAL INFORMATION ON SEDIMENT CONTROL DURING CONSTRUCTION, REFER TO THE "CES PLAN" PROPOSAL.

CONTRACTOR SHALL REPAIR AND MAINTAIN IN ACCEPTABLE CONDITIONS ANY EXISTING PAVEMENT AND UTILITIES THAT WILL REMAIN IN USE AFTER THE COMPLETION OF THE PROJECT. ALSO CONTRACTOR SHALL REPAVE ANY AFFECTED AREA OF PAVEMENT WITH 1" ASPHALT TYPE IV-B.

ALL EXISTING AND NEW M.H. (MANHOLES) AND C.B. (CATCH BASINS) SHALL BE PROTECTED FROM SEDIMENTATION BY MEANS OF HAY BALES AS SHOWN IN TYPICAL DETAILS.

SEDIMENT BASIN MAINTENANCE

WHEN A SEDIMENT BASIN OR TRAP IS USED TO ENABLE SETTLING OF SEDIMENT FROM CONSTRUCTION DEWATERING DISCHARGES, INSPECT THE BASIN FOR SEDIMENT ACCUMULATION. REMOVE SEDIMENT PRIOR TO THE BASIN OR TRAP REACHING HALF FULL. INSPECT TREATMENT FACILITIES PRIOR TO ANY DEWATERING ACTIVITY. IF USING A SEDIMENT CONTROL PRACTICE SUCH AS A SEDIMENT TRAP OR BASIN, COMPLETE ALL MAINTENANCE REQUIREMENTS AS DESCRIBED IN THE FACT SHEETS PRIOR TO DEWATERING.

IMPORTANT NOTES

IF THE HAY BALE OR SEDIMENT LOG SYSTEM USED AS A SEDIMENT CONTROL DONT WORK EFFICIENTLY, THE CONTRACTOR SHALL REPLACE IT BY A DANDY SACK OR DANDY BAG SYSTEM.

EROSION CONTROL MEASURES SHALL BE EMPLOYED TO MINIMIZE TURBIDITY OF SURFACE WATERS LOCATED DOWNSTREAM OF ANY CONSTRUCTION ACTIVITY. WHILE THE VARIOUS MEASURES REQUIRED WILL BE SITE SPECIFIC, THEY SHALL BE EMPLOYED AS NEEDED IN ACCORDANCE WITH THE FOLLOWING:

a. IN GENERAL, EROSION SHALL BE CONTROLLED AT THE FURTHEST PRACTICAL UPSTREAM LOCATION. MEASURES SHALL BE EMPLOYED AS SOON AS PRACTICAL DURING.

b. STORMWATER INLETS SHALL BE PROTECTED DURING CONSTRUCTION. PROTECTION THE VARIOUS STAGES OF INLET CONSTRUCTION. SILT BARRIERS SHALL REMAIN IN PLACE UNTIL SODDING AROUND INLETS IS COMPLETE.

HEAVY CONSTRUCTION EQUIPMENT PARKING AND MAINTENANCE AREAS SHALL BE DESIGNED TO PREVENT OIL, GREASE, AND LUBRICANTS FROM ENTERING SITE DRAINAGE FEATURES INCLUDING STORMWATER COLLECTION AND TREATMENT SYSTEMS. CONTRACTORS SHALL PROVIDE BROAD DIKES, HALES OR SILT SCREENS AROUND, AND SEDIMENT SUMPS WITHIN, SUCH AREAS AS REQUIRED TO CONTAIN SPILLS OF OIL, GREASE OR LUBRICANTS. CONTRACTORS SHALL HAVE AVAILABLE, AND SHALL USE, ABSORBENT FILTER PADS TO CLEAN UP SPILLS AS SOON AS POSSIBLE AFTER OCCURRENCE.

SILT BARRIERS, ANY SILT WHICH ACCUMULATES BEHIND THE BARRIERS, AND ANY FILL USED TO ANCHOR THE BARRIERS SHALL BE REMOVED PROMPTLY AFTER THE END OF THE MAINTENANCE PERIOD SPECIFIED FOR THE BARRIERS.

CONTROL OF WIND EROSION

WIND EROSION SHALL BE CONTROLLED BY EMPLOYING THE FOLLOWING METHODS AS NECESSARY AND APPROPRIATE:

a. BARE EARTH AREAS SHALL BE WATERED DURING CONSTRUCTION AS NECESSARY TO MINIMIZE THE TRANSPORT OF FUGITIVE DUST. IT MAY BE NECESSARY TO LIMIT CONSTRUCTION VEHICLE SPEED IF BARE EARTH HAS NOT BEEN EFFECTIVELY WATERED. IN NO CASE SHALL FUGITIVE DUST BE ALLOWED TO LEAVE THE SITE UNDER CONSTRUCTION.

b. AS SOON AS PRACTICAL AFTER COMPLETION OF CONSTRUCTION, BARE EARTH AREAS SHALL BE VEGETATED.

c. INCLUDE ERECTION OF DUST CONTROL FENCES. IF REQUIRED, DUST CONTROL FENCES SHALL BE CONSTRUCTED IN ACCORDANCE WITH THE DETAIL FOR A SILT FENCE.

EROSION AND SEDIMENTATION CONTROL NOTES

MAINTENANCE OF EROSION CONTROL MEASURES IS OF PARAMOUNT IMPORTANCE TO OWNER. THE CONTRACTOR IS RESPONSIBLE FOR COMPLYING WITH ALL EROSION CONTROL MEASURES SHOWN ON THE PLANS. THE EROSION CONTROL SYSTEM DESCRIBED WITHIN THE CONSTRUCTION DOCUMENTS SHOULD BE CONSIDERED TO REPRESENT THE MINIMUM ACCEPTABLE STANDARDS FOR THIS PROJECT. ADDITIONAL EROSION CONTROL MEASURES MAY BE REQUIRED DEPENDENT UPON THE STAGE OF CONSTRUCTION. THE SEVERITY OF THE RAINFALL EVENT AND/OR AS DEEMED NECESSARY AS A RESULT OF ON-SITE INSPECTIONS BY THE OWNER, THEIR REPRESENTATIVES OR THE JURISDICTIONAL AUTHORITIES. THESE ADDITIONAL MEASURES SHALL BE INSTALLED AT NO ADDITIONAL COST TO THE OWNER. IT IS THE CONTRACTOR'S ULTIMATE RESPONSIBILITY TO ASSURE THAT THE STORM WATER DISCHARGE FROM THE SITE DOES NOT EXCEED THE TOLERANCES ESTABLISHED BY ANY OF THE JURISDICTIONAL AUTHORITIES.

1

2

3

4

5

A

B

C

D

E

F

