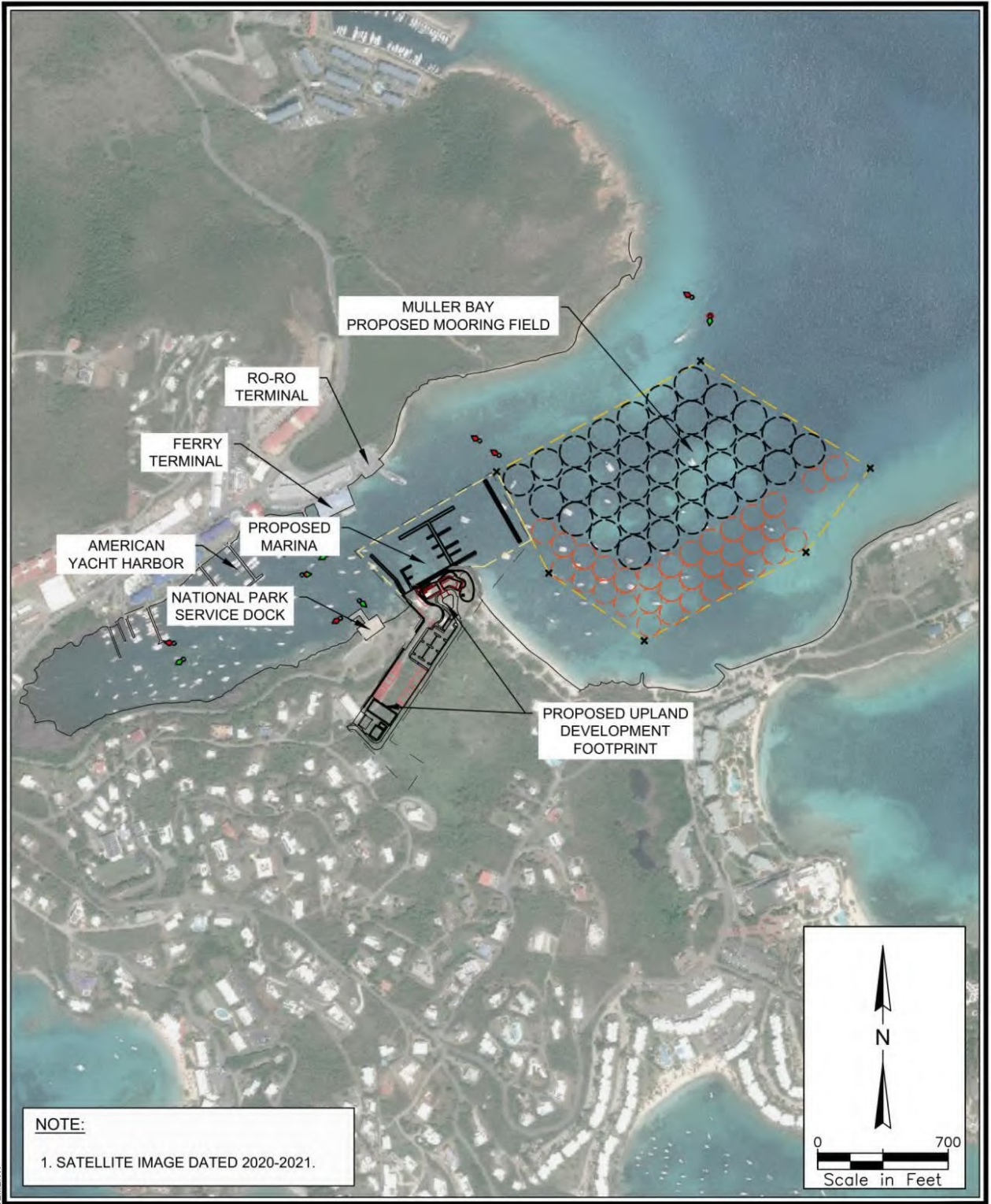


NOTE: THESE DRAWINGS AND DESIGNS ARE STRICTLY CONFIDENTIAL AND PROTECTED BY INTERNATIONAL COPYRIGHT LAW. DETAILS MUST NOT BE DISCLOSED, REPRODUCED OR COMMUNICATED TO A 3rd PARTY IN ANY FORM OR MANNER WITHOUT THE PRIOR WRITTEN APPROVAL OF APPLIED TECHNOLOGY & MANAGEMENT.



**NOTE:**  
1. SATELLITE IMAGE DATED 2020-2021.

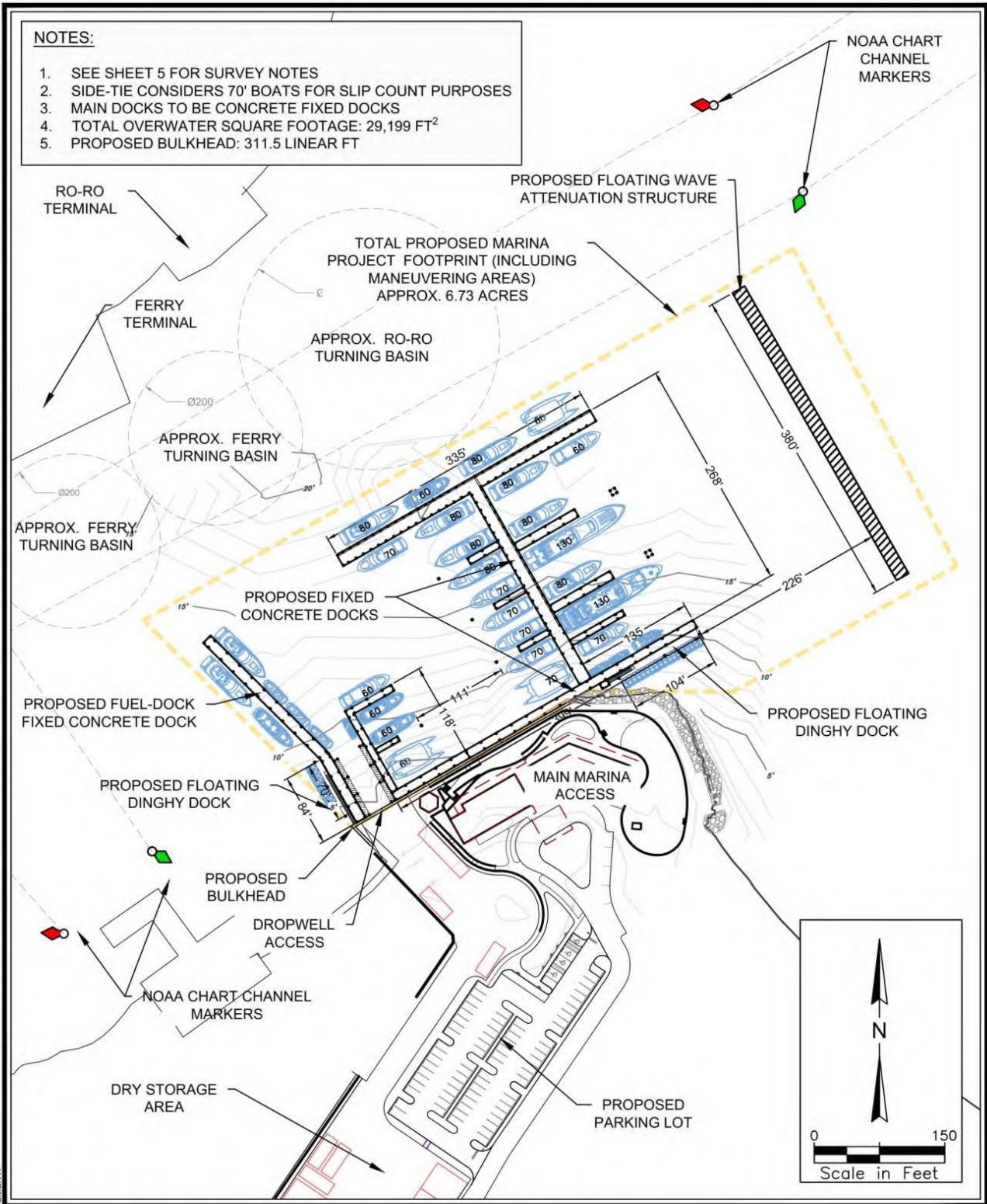
 A Geosyntec Company 2047 Vista Parkway, Suite 201 West Palm Beach, FL 33411 (561) 659-0041 Certificate of Authorization #4669	<b>PROJECT COMPONENTS</b>  <b>LATITUDE 18 MARINA</b>	Requested by: Jack Rock B-A, LLC Redhook Hayes B Rem, LLC  Sheet Number: 6 of 24  FOR PERMITTING PURPOSES ONLY NOT FOR CONSTRUCTION	Location: Vessup Bay, St. Thomas, USVI Parcel ID: Waterbody: Muller Bay - Vessup Bay  Latitude: 18 19' 32" N Longitude: 64 50' 54" W Issue Date: 12-19-2022
--	--	--	---

PROPOSED UPLAND AND MARINA SITE LAYOUT

NOTE: THESE DRAWINGS AND DESIGNS ARE STRICTLY CONFIDENTIAL AND PROTECTED BY INTERNATIONAL COPYRIGHT LAW. DETAILS MUST NOT BE DISCLOSED, REPRODUCED OR COMMUNICATED TO A 3rd PARTY IN ANY FORM OR MANNER WITHOUT THE PRIOR WRITTEN APPROVAL OF ATM.

**NOTES:**

1. SEE SHEET 5 FOR SURVEY NOTES
2. SIDE-TIE CONSIDERS 70' BOATS FOR SLIP COUNT PURPOSES
3. MAIN DOCKS TO BE CONCRETE FIXED DOCKS
4. TOTAL OVERWATER SQUARE FOOTAGE: 29,199 FT<sup>2</sup>
5. PROPOSED BULKHEAD: 311.5 LINEAR FT



**ATM**  
 A Geospatial Company  
 2047 Vista Parkway, Suite 201  
 West Palm Beach, FL 33411  
 (561) 659-0041  
 Certificate of Authorization #4669

**OVERALL PROPOSED PLAN  
 MARINA**

**LATITUDE 18 MARINA**

Requested by:  
 Jack Rock B-A, LLC  
 Redhook Hayes B Rem, LLC

Sheet Number: 8 of 24

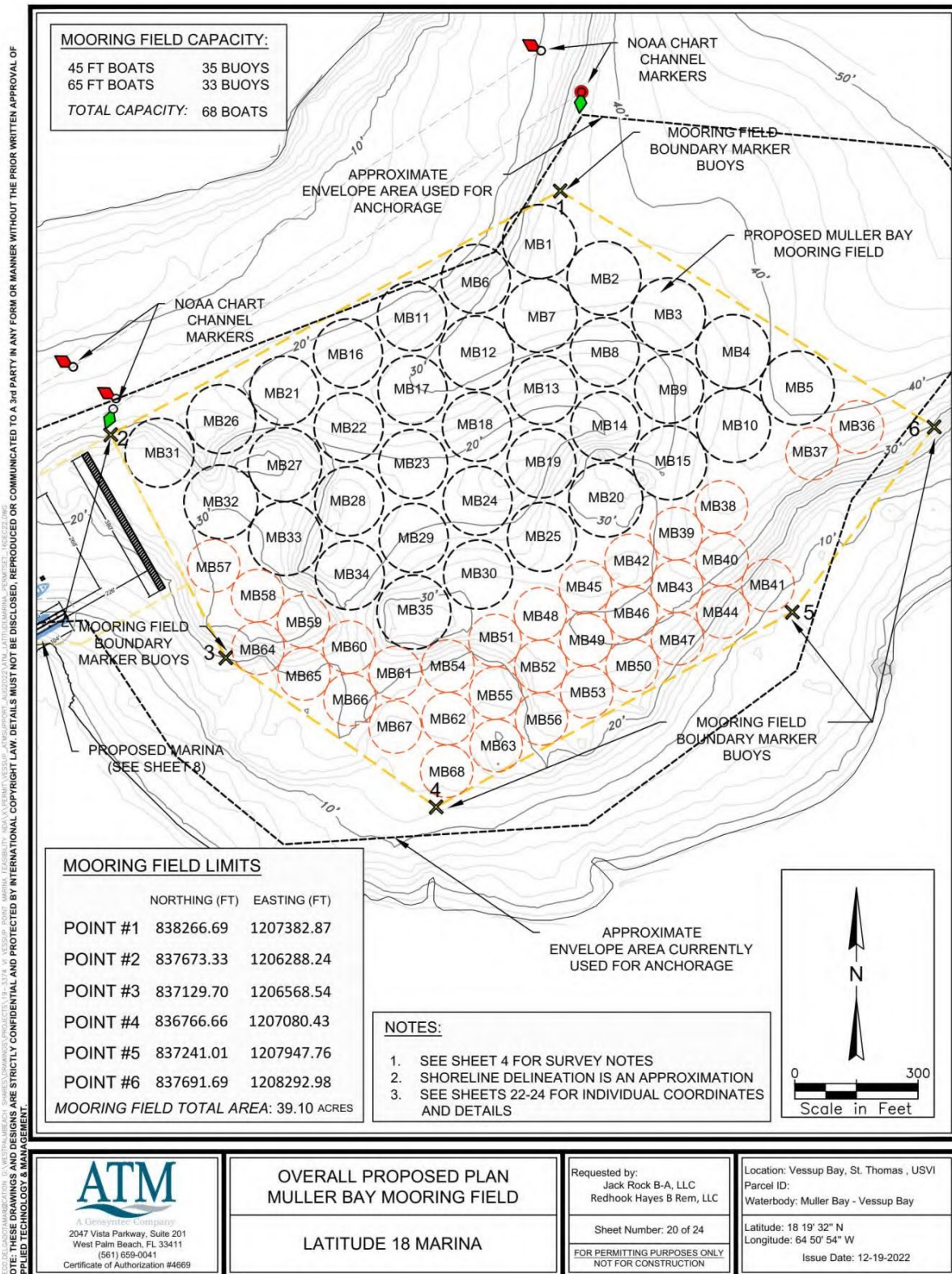
FOR PERMITTING PURPOSES ONLY  
 NOT FOR CONSTRUCTION

Location: Vessup Bay, St. Thomas, USVI  
 Parcel ID:  
 Waterbody: Muller Bay - Vessup Bay

Latitude: 18 19' 32" N  
 Longitude: 64 50' 54" W

Issue Date: 12-19-2022

# PROPOSED MARINA LAYOUT



**MOORING FIELD CAPACITY:**

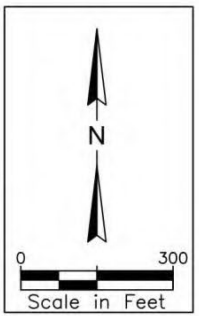
45 FT BOATS	35 BUOYS
65 FT BOATS	33 BUOYS
<b>TOTAL CAPACITY: 68 BOATS</b>	

**MOORING FIELD LIMITS**

	NORTHING (FT)	EASTING (FT)
POINT #1	838266.69	1207382.87
POINT #2	837673.33	1206288.24
POINT #3	837129.70	1206568.54
POINT #4	836766.66	1207080.43
POINT #5	837241.01	1207947.76
POINT #6	837691.69	1208292.98

MOORING FIELD TOTAL AREA: 39.10 ACRES

- NOTES:**
1. SEE SHEET 4 FOR SURVEY NOTES
  2. SHORELINE DELINEATION IS AN APPROXIMATION
  3. SEE SHEETS 22-24 FOR INDIVIDUAL COORDINATES AND DETAILS



GEOLOGICAL INVESTIGATION, WEST PALM BEACH, FLORIDA, U.S. DEPARTMENT OF THE INTERIOR, BUREAU OF LAND MANAGEMENT, 1910 N. W. 10TH AVENUE, SUITE 201, WEST PALM BEACH, FLORIDA 33411  
 NOTE: THESE DRAWINGS AND DESIGNS ARE STRICTLY CONFIDENTIAL AND PROTECTED BY INTERNATIONAL COPYRIGHT LAW. DETAILS MUST NOT BE DISCLOSED, REPRODUCED OR COMMUNICATED TO A 3rd PARTY IN ANY FORM OR MANNER WITHOUT THE PRIOR WRITTEN APPROVAL OF ATM APPLIED TECHNOLOGY & MANAGEMENT.

 2047 Vista Parkway, Suite 201 West Palm Beach, FL 33411 (561) 659-0041 Certificate of Authorization #4669	<p align="center"><b>OVERALL PROPOSED PLAN MULLER BAY MOORING FIELD</b></p> <p align="center"><b>LATITUDE 18 MARINA</b></p>	Requested by: Jack Rock B-A, LLC Redhook Hayes B Rem, LLC  Sheet Number: 20 of 24	Location: Vessup Bay, St. Thomas, USVI Parcel ID: Waterbody: Muller Bay - Vessup Bay  Latitude: 18 19' 32" N Longitude: 64 50' 54" W  Issue Date: 12-19-2022
	<p align="center"><small>FOR PERMITTING PURPOSES ONLY NOT FOR CONSTRUCTION</small></p>		

# PROPOSED MOORING FIELD LAYOUT



MARINA BULKHEAD AREA



LOOKING WEST INTO VESSUP BAY



LOOKING EAST INTO REDHOOK BAY



LOOKING NORTH AT REDHOOK FERRY TERMINAL