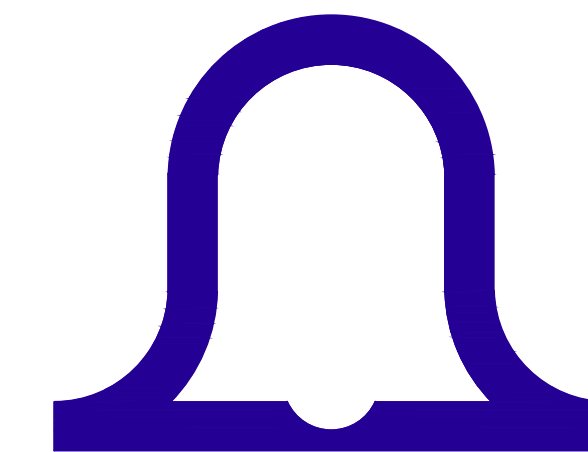
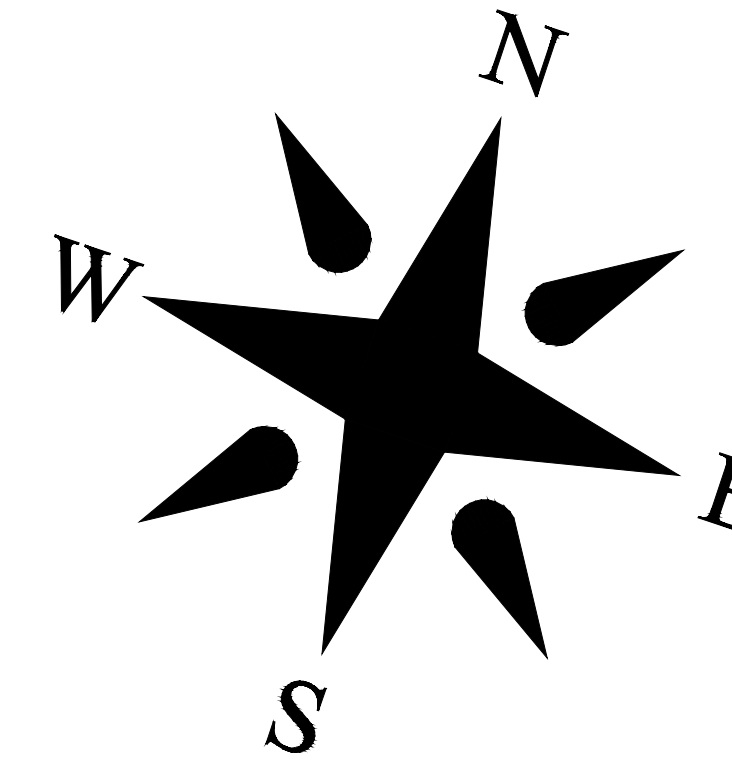


DPNR-CCZP  
 RECEIVED BY: *Leif Salter*  
 DATE: 8-3-2023



**HARNEL**  
 ENGINEERING  
 &  
 CONSTRUCTION

P.O. BOX 306115  
 ST. THOMAS, USVI  
 00802

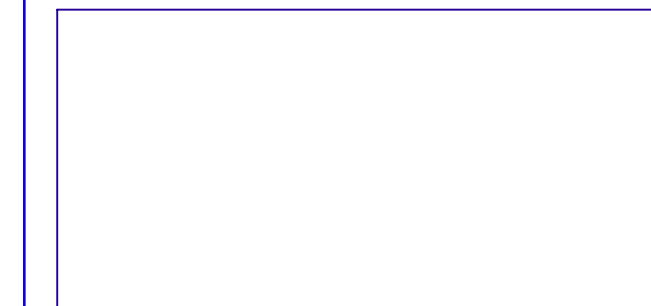
T: 340.244.5649  
 C: 340.244.5610

HARNELINTERNATIONAL.COM

**WARNING**

THESE PLANS AND THE DESIGNS CONTAINED HEREIN ARE THE SOLE PROPERTY OF HARNEL INTERNATIONAL. THESE PLANS MAY NOT BE REPRODUCED WITHOUT THE WRITTEN PERMISSION OF HARNEL INTERNATIONAL. UNAUTHORIZED USE SHALL INVITE A CLAIM FOR COMPENSATION. THE USE BY ANY PERSON OR FIRM OF THESE PLANS OR ANY PART THEREOF SHALL NOT IN ANY WAY SUBJECT HARNEL INTERNATIONAL TO ANY COST OR DAMAGES FOR ANY ERROR OR OMISSION CONTAINED THEREIN.

**CONSTRUCTION DOCUMENTS FOR A SINGLE FAMILY DWELLING AT:**



DATE: \_\_\_\_\_  
 PROJECT No.: \_\_\_\_\_  
 SCALE: \_\_\_\_\_  
 DRAWN BY: \_\_\_\_\_  
 CHECKED BY: \_\_\_\_\_  
 APPROVED BY: \_\_\_\_\_

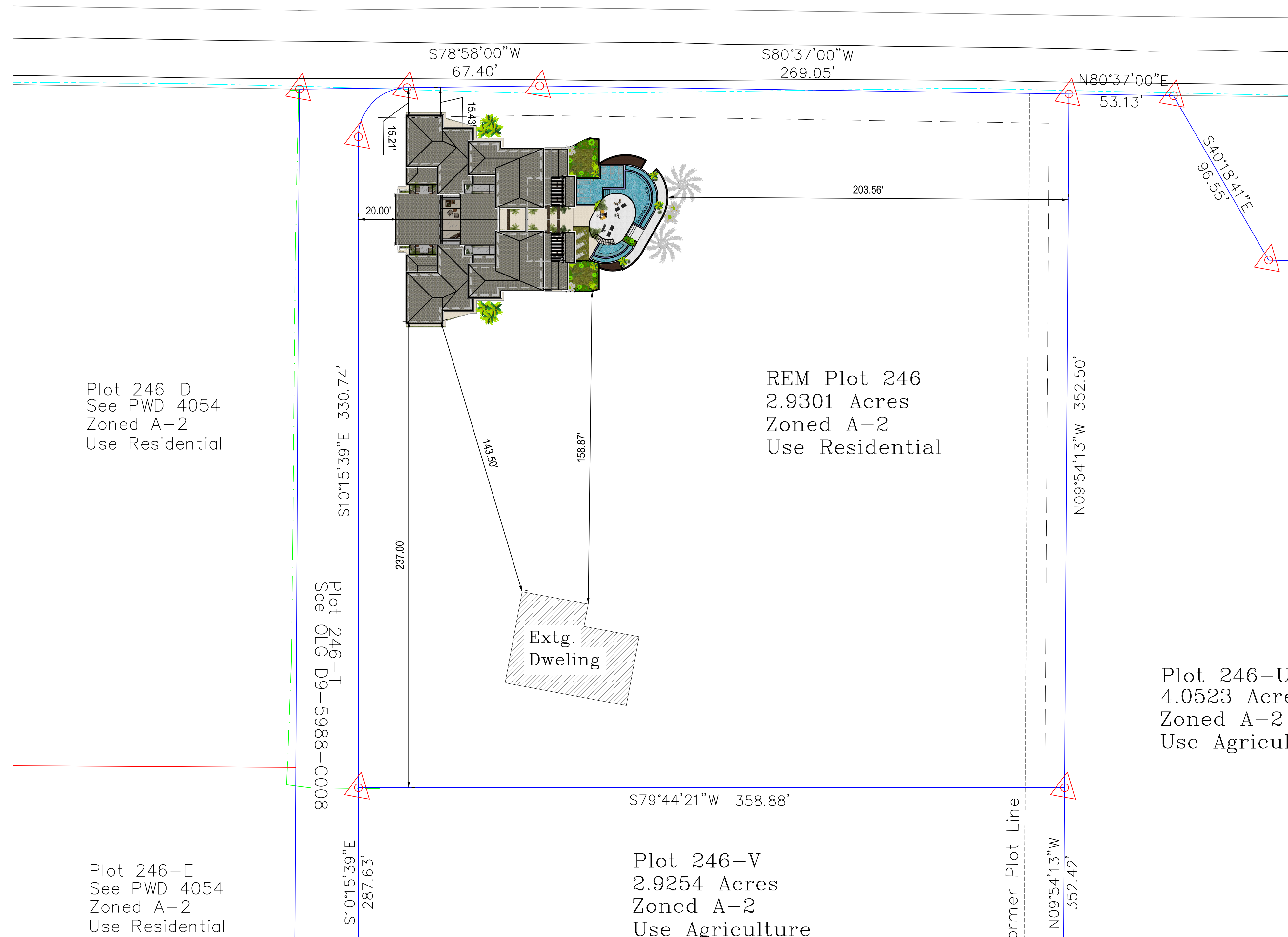
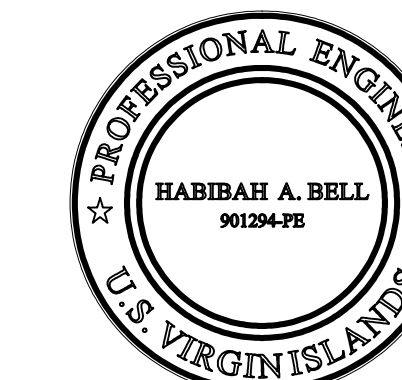
**REVISIONS**

No.	DATE	REMARKS

**SHEET**

**1** OF **XX**

**SEAL**



**1** GENERAL SITE PLAN  
 A0 Scale: 1/32" = 1'-0"

**GENERAL SITE PLAN**

SCALE: NTS