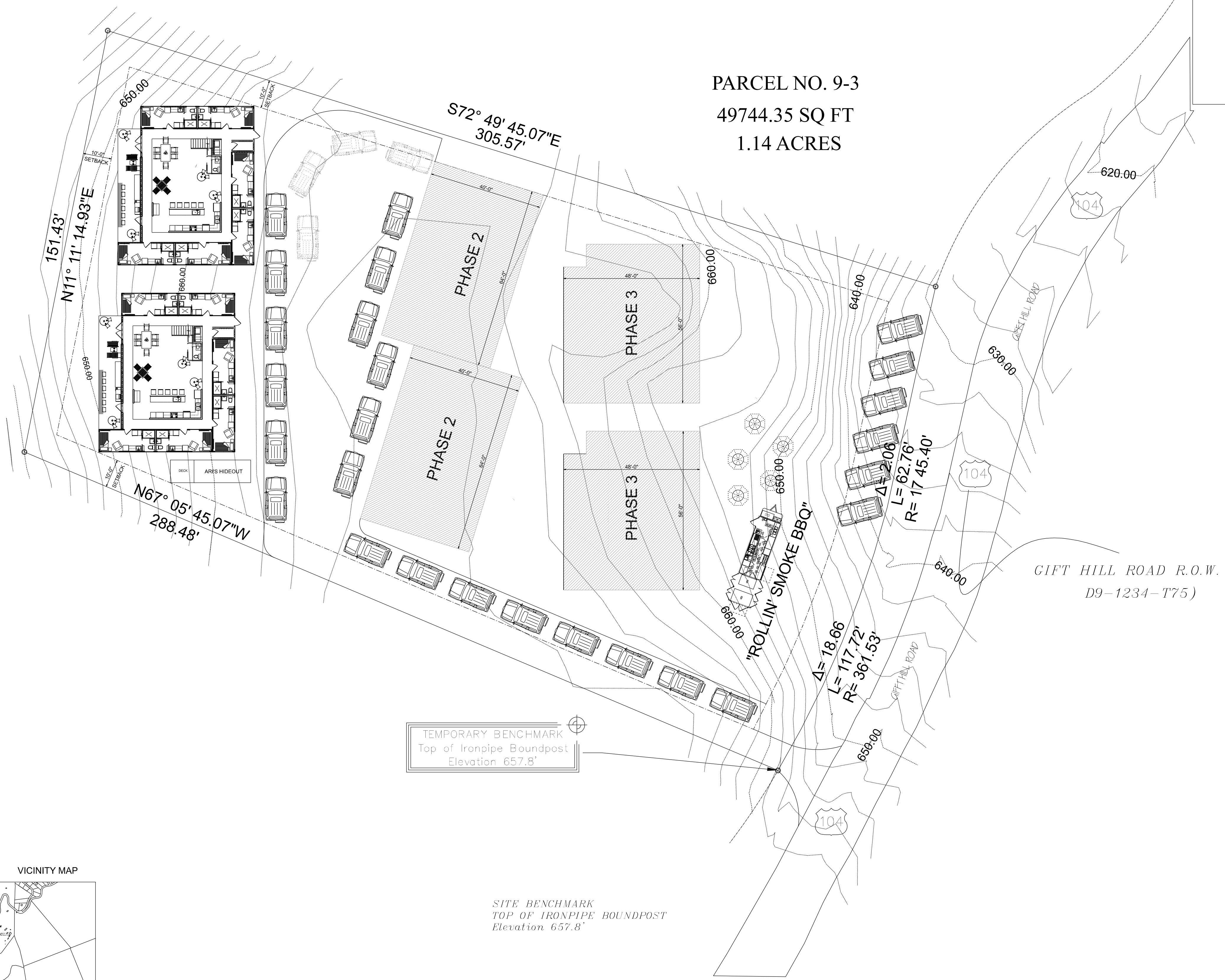


ENGINEER SEAL



St. John Group Living
 A Container Home Development
 Long Term Development, LLC

PARCEL NO. 9-3
 49744.35 SQ FT
 1.14 ACRES



LOT COVERAGE SUMMARY:

PHASE 1	= 5,248 SQ. FT.
PHASE 2	= 5,120 SQ. FT.
PHASE 3	= 5,248 SQ. FT.
TOTAL SQ. FT.	= 15,616
PARCEL SQ. FT.	= 49,744.35
LOT COVERAGE	= 31.39%

ZONE: Zoning: "R2" Residential
 PLAN REF: D9-1234-T75

Map of record for Remainder Parcel No. 9-3

LEGEND

	CONCRETE MONUMENT FOUND
	IRON PIPE FOUND
	IRON PIPE SET
	IRON REBAR FOUND
	CONCRETE BOUND SET
	T-IRON FOUND
	UTILITY POLE
	MONUMENTED POINT NOT LOCATED
	PK NAIL SET
	UNMONUMENTED POINT
	CONTROL POINT SET
	PROPERTY LINE
	RECORD DATA WHERE DIFFERENT FROM MEASURED DATA
	FENCE LINE
	STONE WALL
	CONTOUR LINE - 10' INTERVAL
	CONTOUR LINE - 2' INTERVAL
	SPOT GRADE

REVISIONS:
 NO: ITEM: DATE:

DRAWN BY: BDB DATE: 5-3-2022

PROJECT NAME:
9-3 GLUCKSBERG

SHEET TITLE:
 SITE PLAN

SHEET NUMBER:
A-1.0