

COMMITTEE ON BUDGET, APPROPRIATIONS & FINANCE  
36<sup>TH</sup> LEGISLATURE OF THE VIRGIN ISLANDS

# POST AUDIT DIVISION

FISCAL YEAR 2026 BUDGET ANALYSIS

## Virgin Islands Police Department

August 13, 2025



COMMITTEE ON BUDGET, APPROPRIATIONS & FINANCE  
36<sup>TH</sup> LEGISLATURE OF THE VIRGIN ISLANDS

# POST AUDIT DIVISION

## COMMITTEE MEMBERS

***Chair, Honorable*** Novelle E. Francis, Jr.  
Senator Dwayne M. De Graff  
Senator Hubert L. Frederick  
Senator Kurt A. Vialet

***Vice Chair, Honorable*** Marvin A. Blyden  
Senator Marise C. James  
Senator Ray Fonseca

## POST AUDIT DIVISION STAFF CONTRIBUTORS

Dr. Theodora Philip .....**Post Auditor**  
Ms. Nikia Fleming .....**Assistant Post Auditor**  
Ms. Ameka Hydman.....Executive Assistant  
Ms. Odette Gordon.....Budget Analyst  
Ms. Ashley Wattley .....Budget Analyst  
Ms. Christina Colbourne.....Administrative Assistant  
Ms. Shirley Fahie .....Administrative Secretary

## **TABLE OF CONTENTS**

<b>TITLE</b>	<b>PAGE NUMBER</b>
<b>DEPARTMENT OVERVIEW</b>	<b>1-2</b>
<b>VI POLICE DEPARTMENT AT A GLANCE</b>	<b>3</b>
<b>FUND FLOW ANALYSIS</b>	<b>3-4</b>
<b>FISCAL YEAR 2026 BUDGET SUMMARY</b>	<b>5</b>
<b>OTHER SERVICES &amp; CHARGES</b>	<b>6-7</b>
<b>EXPENDITURES</b>	<b>7-9</b>
<b>PERSONNEL SERVICES</b>	<b>9</b>
<b>LEASES</b>	<b>10-11</b>
<b>PROFESSIONAL SERVICES CONTRACTS</b>	<b>11-12</b>
<b>CONTRACTS LISTING</b>	<b>12</b>
<b>FEDERAL GRANTS</b>	<b>13-14</b>
<b>REVENUES</b>	<b>14-15</b>
<b>VEHICLE SUMMARY</b>	<b>15</b>
<b>OUTSTANDING OBLIGATIONS</b>	<b>15-16</b>
<b>SUMMARY</b>	<b>16</b>
<b>APPENDIX I. VEHICLE LISTING</b>	<b>17-24</b>
<b>APPENDIX II. PERSONNEL LISTING</b>	<b>25-36</b>

## **DEPARTMENT'S OVERVIEW**

### **Mission Statement**

To protect the life and property of all citizens of the Virgin Islands and to ensure a safe and secure environment.

### **Scope and Overview**

The **Virgin Islands Police Department (VIPD)** is the primary law enforcement agency for the United States Virgin Islands, responsible for maintaining public safety, enforcing territorial laws, and protecting life and property across the islands of St. Thomas/Water Island, St. John, and St. Croix. Operating under the executive branch of the Government of the Virgin Islands, the department which employs 333 sworn and 149 civilian staff provides patrol, investigative, traffic, and specialized policing services. The Department is structured into territorial and district commands which oversees the daily operations of activity centers.

The Department's primary emphasis is the provision of basic police services, specifically to maintain and increase police control, rapid response to incidents, calls for service, effective investigation, and solution of criminal acts and timely apprehension of criminal perpetrators throughout the territory.

### **Activity Centers of the Virgin Islands Police Department**

<b>Divisions</b>	<b>Responsibilities</b>
<b><i>Management</i></b>	<i>Office of the Police Commissioner ensures the proper administration of the department and obtains the necessary personnel, equipment, training, funding, and other resources for police operations.</i>
<b><i>Intelligence Bureau</i></b>	<i>Intelligence Bureau collects, processes, and disseminates intelligence data; investigates major crimes to include white collar crime, organized crime, terrorism, subversive activity and all other cases as assigned by the Police Commissioner.</i>
<b><i>Division of Police Operation STX/STT/STJ</i></b>	<i>The Division of Police Operations ensures the protection of life and property; prevents and deters crime; prevents and diminishes the fear of crime; defends public peace and tranquility; and aggressively pursues and apprehends those who violate the law.</i>
<b><i>Special Operations Bureau STX/STT/STJ</i></b>	<i>The Special Operations Bureau is responsible for patrolling, surveillance, and interdiction operations to include those focused on the fight against drug trafficking and weapons smuggling in the Territory.</i>
<b><i>School Security STX/STT</i></b>	<i>The School Security Bureau secures and protects schools by providing crime prevention activities for the Territory's youth.</i>
<b><i>Administrative Services</i></b>	<i>Administrative Services maintains personnel, fiscal and property records, and payroll. It provides administrative services and logistical support to the overall operations.</i>
<b><i>Communications</i></b>	<i>Operates equipment necessary to communicate with HQ, Zones Officers and Units</i>

<b>Divisions</b>	<b>Responsibilities</b>
<b>Management Information System Bureau</b>	<i>Management Information Systems Bureau provides a variety of information technology services to assist in the ongoing war against crime and violence</i>
<b>Highway Safety Administration</b>	<i>Highway Safety Administration administers the Highway Safety Program for compliance with federal requirements necessary to qualify for Federal Highway Safety funds.</i>
<b>Highway Safety Res/Stat</b>	<i>Highway Safety Res/Stat reduces fatalities, injuries and economic losses resulting from motor vehicle crashes through the administration of the Virgin Islands Highway Safety Plan.</i>
<b>Training</b>	<i>Training develops and conducts programs consistent with modern methods and practices to increase the efficiency and productivity of both sworn and civilian personnel. It also assists with training personnel of other enforcement agencies.</i>
<b>Motor Pool STX/STT/STJ</b>	<i>Motor Pool maintains and stores all vehicles.</i>

### Virgin Islands Police Department – Federal CFDA

<b>Divisions</b>	<b>Responsibilities</b>
<b>Public Safety Partnership &amp; Community Policing Grants (CFDA 16.710)</b>	<i>Advance the practice of community policing as an effective strategy in communities' efforts to improve public safety</i>
<b>The Motor Carrier Safety Assistance (CFDA 20.218)</b>	<i>A formula grant program that provides financial assistance to States to reduce the number and severity of accidents and hazardous materials incidents involving commercial motor vehicles (CMV).</i>
<b>Motor Carrier Safety Assistance High Priority CFDA 20.237)</b>	<i>Objectives are to support, enrich, and augment Commercial Motor Vehicle (CMV) safety programs through partnerships with States, local governments, federally recognized Indian tribes, other political jurisdictions, and other persons to carry out high priority activities and projects.</i>
<b>State and Community Highway Safety (CFDA 20.600)</b>	<i>Provides a coordinated national highway safety program to reduce traffic crashes, deaths, injuries, and property damage.</i>

## VIPD AT A GLANCE

Under Act No. 8916, a total of **\$71,812,451** was appropriated to the Virgin Islands Police Department for Fiscal Year 2025. In addition to its General Fund allocation, the Department also received **\$125,000 in supplemental funding** from the Southern Trust Company Settlement Fund, as authorized by Act No. 8920, to support *Peace Officer Standards and Training (POST)* initiatives.

As part of its ongoing commitment to professional development and operational readiness, VIPD reported offering approximately *1,368 hours of training* to its officers during FY 2025. These sessions included In-Service Trainings, Use of Force Investigative Supervisory Training, Mental Health First Aid, Firearms Qualifications, and Physical Conditioning Programs. These training efforts are aimed at ensuring officer competency, community safety, and compliance with law enforcement best practices and accreditation standards.

According to the Department, there were no changes in federal funding levels during Fiscal Year 2025. However, the VIPD reported that five (5) FEMA grants totalling **\$387,292 are currently pending de-obligation**. These grants **were originally allocated for safety equipment and building contents**. In addition, the Virgin Islands Office of Highway Safety (VIOHS) noted that one Federal Motor Carrier Safety Administration (FMCSA) grant is set to expire on September 30, 2025. An **estimated \$300,000 is anticipated to be de-obligated due to a prolonged vacancy and delays in procurement processes**.

### **Camera Installation Progress**

Significant progress has been made on VIPD's surveillance enhancement initiatives:

- Phase II of the installation of 200 cameras—funded through the Department of the Interior (DOI)—is approximately 90% complete.
- Pan-Tilt-Zoom (PTZ) and License Plate Recognition (LPR) cameras are in the final stage of installation.
- The Department is currently awaiting shipment of specialty cameras, which will complete the remaining components of the project.

### **Operational Centralization Initiative**

During the FY 2025 Budget Hearing, the Commissioner of Police announced VIPD's strategic initiative to centralize all police patrol elements across both districts. This initiative has since been successfully implemented, streamlining operations, improving coordination, and enhancing response capabilities across the territory.

## FUND FLOW ANALYSIS

The Department's Fiscal Year 2025 fund flow analysis outlines the VIPD's budget across five key components: appropriations, allotted amount, obligations, expenditures and balance available.

Dept.	Fund Source	Appropriation	Allotted as of July 31, 2025	Obligated as of July 31, 2025	Expended as of June 30, 2025	Balance	Remarks
VIPD	General	\$71,812,451	\$51,211,380	\$70,066,728	\$50,903,374	\$20,909,077	<b>\$ 20,601,071 unallotted/ \$19,163,354 unspent obligations</b>

*Exhibit I*



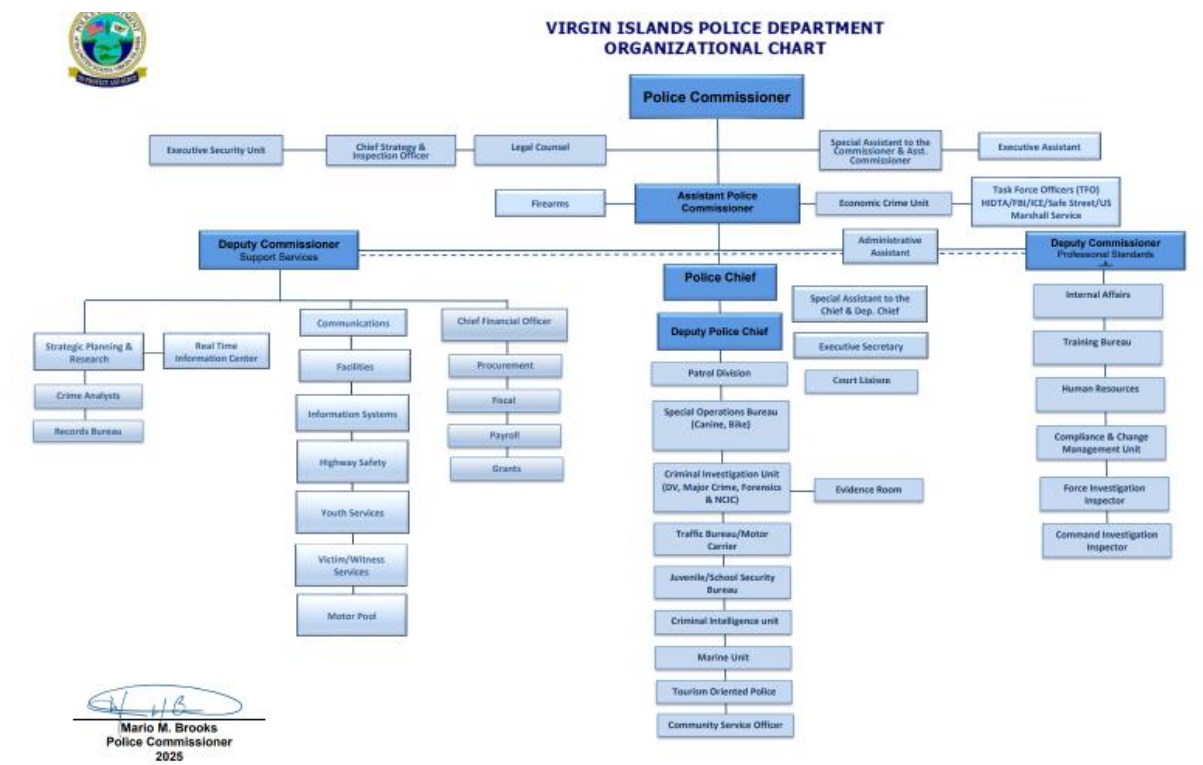
For Fiscal Year 2025, the Virgin Islands Police Department received a General Fund appropriation of **\$71,812,451**. As of July 31, 2025, a total of **\$51,211,380 (71.3%)** of the appropriation had been allotted, **while \$20,601,071 (28.7%) remains unallotted**.

The department reported total obligations of **\$70,066,728 (97.6%)**. Of the total appropriation, the Department reported obligations totalling **\$70,066,728 (97.6%)**, indicating that nearly the entire appropriation has been committed. However, as of June 30, 2025, *only \$50,903,374 (70.9%)* had been expended, **leaving \$19,163,354 (26.7%) in unspent obligations**. The remaining balance of **\$20,909,077 (29.1%)** reflects a combination of unexpended and unallotted funds.

The current organizational chart outlines the Department's chain of command and delineates the distribution of responsibilities across administrative, operational, and support divisions.

At the top of the structure is the Commissioner of Police, who provides executive leadership and oversight of departmental policies, strategic initiatives, and resource deployment. Reporting to the Commissioner are Deputy Commissioners, Assistant Commissioners, and District Chiefs, each responsible for managing key units such as Patrol, Criminal Investigation, Internal Affairs, Training, Records, and Administrative Services.

This organizational framework ensures coordinated law enforcement coverage across the St. Thomas/St. John and St. Croix districts, and supports VIPD's FY 2026 objectives to ***Reduce overtime expenditures, centralizing all patrol operations and completing the Real Time Crime Center (RTCC) Project.*** See Exhibit II.



## FISCAL YEAR 2026 BUDGET SUMMARY

The Governor's Fiscal Year 2026 General Fund/Miscellaneous recommendation for the Virgin Islands Police Department totals **\$75,955,035**. Additionally, VIPD is slated to receive additional funds to include **\$3,000,000**-from the *Tourism Advertising Revolving Fund*, **\$584,314**-from the *Peace Officer Training Fund* and **\$11,714,637**- in *Federal Funds*. A three (3) year financial summary is listed below in ***Exhibit III***.

Description	FY 2024 Actuals	FY 2025 Revised Budget	FY 2026 Recommendation	Variance	% Change
Personnel Services	\$55,008,257	\$39,183,627	\$40,345,456	\$1,161,829	103%
Fringe Benefits	15,986,844	14,389,137	15,446,047	1,056,910	107%
Funding For Existing Vacant Positions-Personnel	-	1,478,825	-	(1,478,825)	(100)%
Funding For Existing Vacant Positions – Fringe	-	762,399	-	(762,399)	(100)%
Supplies	2,193,159	3,855,947	4,787,675	931,728	124%
Other Services & Charges	6,905,305	9,705,822	10,519,603	813,781	108%
Utilities		1,800,000	1,826,186	26,186	101%
Capital Project	95,700	-	415,000	415,000	100%
<b>Subtotal</b>	<b>80,189,265</b>	<b>71,175,757</b>	<b>73,339,967</b>	<b>2,164,210</b>	<b>3.00%</b>
<b>Miscellaneous</b>					
Police Athletic League- STT	14,118	65,000	65,000	-	100%
Bovoni Weed & Seed ( Cadet Lead	-	65,000	65,000	-	100%
Excessive Force Consent Decree	884,946	1,826,694	2,005,068	178,374	110%
Crime Stoppers	-	100,000	100,000	-	100%
Police Athletic League- STX	9,498	65,000	65,000	-	100%
Grove Place Weed & Seed (Cadet	50,295	65,000	65,000	-	100%
Contribution to Peace Officer Train		250,000	250,000	-	100%
<b>Subtotal</b>	<b>958,856</b>	<b>2,436,694</b>	<b>2,615,068</b>	<b>178,374</b>	<b>107%</b>
<b>Total General Fund</b>	<b>81,148,121</b>	<b>73,612,451</b>	<b>75,955,035</b>	<b>2,342,584</b>	<b>3.00%</b>
<b>Tourism Advertising Revolving Fund</b>					
Other	43,224	-	222,000	222,000	100%
Miscellaneous	546,238	-	2,778,000	2,778,000	100%
<b>Total Tourism Advertising Revolving Fund</b>	<b>589,462</b>	<b>-</b>	<b>3,000,000</b>	<b>3,000,000</b>	<b>100%</b>
<b>Peace Officer Training Fund</b>					
Personnel Services	265,257	-	402,500	402,500	100%
Fringe Benefits	114,917	-	181,814	181,814	100%
Supplies	19,740	-	-	-	-
Other Services	42,994	-	-	-	-
Capital Projects	-	-	-	-	-
<b>Total Peace Officer Training Fund</b>	<b>442,908</b>	<b>-</b>	<b>584,314</b>	<b>584,314</b>	<b>100%</b>
<b>USDHS Asset Forfeiture Fund</b>					
Supplies	5,852	-	-	-	-
Other Services	4,600	-	-	-	-
Capital Projects	40,720	-	-	-	-
<b>Total USDHS Asset Forfeiture Fund</b>	<b>51,172</b>	<b>-</b>	<b>-</b>	<b>-</b>	<b>-</b>
<b>Single Payer Utilities Fund</b>					
Utilities	1,854,141	-	-	-	-
<b>Total Single Payer Utilities Fund</b>	<b>1,854,141</b>	<b>-</b>	<b>-</b>	<b>-</b>	<b>-</b>
<b>Federal Funds All Except DOE</b>					
Personnel Services	1,283,111	-	1,706,736	1,706,736	100%
Fringe & Benefits	400,095	-	731,318	731,318	100%
Supplies	407,237	-	1,709,890	1,709,890	100%
Other Services. & Charges.	1,006,339	-	2,483,258	2,483,258	100%
Indirect Cost	230,616	-	321,935	321,935	100%
Capital Projects	309,922	-	4,761,500	4,761,500	100%
<b>Total Federal Funds All Except DOE</b>	<b>3,637,320</b>	<b>-</b>	<b>11,714,637</b>	<b>11,714,637</b>	<b>100%</b>
<b>GRAND TOTALS</b>	<b>\$87,723,125</b>	<b>\$73,612,451</b>	<b>\$91,253,986</b>	<b>\$17,641,535</b>	<b>24.0%</b>

*Exhibit III*



## **OTHER SERVICES & CHARGES**

*Exhibit IV* presents a comparative analysis of expenditures for Fiscal Year 2024, the revised budget of Fiscal Year 2025, and the Governor's recommended budget for Fiscal Year 2026 under the Other Services and Charges line item.

Description	FY 2024 Expenditures	FY 2025 Revised Budget	FY 2026 Recommended	Variance	% CHANGE
<b>General Fund</b>					
Credit Card Expenses	\$-	\$-	\$100,000	\$100,000	100.00%
Membership Dues	1,550	-	2,000	2,000	100.00%
Debris Removal	7,804	16,500	8,760	(7,740)	-46.90%
Repairs and Maintenance	529,329	456,460	409,000	(47,460)	-10.39%
Automotive Repair & Maintenance	61,660	97,000	101,000	4,000	4.123%
Rental of Land/Buildings	1,350,787	3,252,499	2,528,042	(724,457)	-22.27%
Rental Machines/Equipment	291,196	282,425	311,611	29,186	-10.33%
Professional Services	2,676,579	3,851,005	3,970,679	119,674	3.10%
Security	-	600	-	(600)	-100.00%
Training	49,195	204,000	240,000	36,000	17.64%
Communication	666,114	929,034	946,410	17,376	1.870%
Advertising & Promotion	280,891	446,500	270,000	(176,500)	-39.52%
Printing & Binding	31,001	20,650	32,000	11,350	54.96%
Transportation - Not Travel	122,459	112,761	106,161	(6,600)	-5.853%
In & Outpatients Services	54,405	20,000	55,000	35,000	175.0%
Travel	250,440	695,000	698,440	3,440	0.494%
Travel/Cash Advance	120,276	148,388	95,000	(53,388)	-35.97%
Purchase Bulk Airline	102,639	104,000	113,000	9,000	8.653%
Insurance	-	-	2,500	2,500	100.00%
Grants/Ind Govt Agencies	-	-	100,000	100,000	100.00%
Other Services NOC	308,980	340,000	180,000	2,606	1.020%
Transfer Out General Fund	-	250,000	250,000	-	-
<b>General Fund Total- 0100</b>	<b>6,905,305</b>	<b>11,226,822</b>	<b>10,519,603</b>	<b>(707,219)</b>	<b>-6.299%</b>
<b>Tourism Advertising Revolving Fund</b>					
Other	43,224	312,000	222,000	(90,000)	-28.84%
<b>Tourism Advertising Revolving Fund- Total-6068</b>	<b>43,224</b>	<b>312,000</b>	<b>222,000</b>	<b>(90,000)</b>	<b>-28.84%</b>
<b>Federal Grants All Except DOE</b>					
Stipends	1,650	-	33,000	33,000	100.00%
Automotive Repair & Maintenance	3,600	-	-	-	-
Rental of Land/Buildings	6,432	-	-	-	-
Professional Services	511,627	-	146,250	146,250	100.00%
Training	7,590	-	3,000	3,000	100.00%
Advertising & Promotion	179,028	-	1	1	100.00%
Printing & Binding	1,969	-	-	-	-
Transportation - Not Travel	8,983	-	-	-	-
Travel	54,511	-	198,769	198,769	100.00%
Travel/Cash Advance	34,166	-	-	-	-
Purchase Bulk Airline	18,500	-	24,000	24,000	100.00%
Relief to Individuals	44,806	-	55,775	55,775	100.00%
Other Services NOC	133,477	794,707	2,022,463	1,227,756	154.49%
<b>Federal Grants All Except DOE Total-3100</b>	<b>1,006,339</b>	<b>794,707</b>	<b>2,483,258</b>	<b>1,688,551</b>	<b>212.47%</b>
<b>Peace Officer Training Fund</b>					
Debris Removal	1,543	2,500	-	(2,500)	-100.00%

Description	FY 2024 Expenditures	FY 2025 Revised Budget	FY 2026 Recommended	Variance	% CHANGE
Repairs and Maintenance	625	8,000	-	(8,000)	-100.00%
Automotive Repair & Maintenance	612	10,000	-	(10,000)	-100.00%
Professional Services	105	5,000	-	(5,000)	-100.00%
Security	600	2,000	-	(2,000)	-100.00%
Training	-	35,000	-	(35,000)	-100.00%
Communication	19,381	25,000	-	(25,000)	-100.00%
Transportation - Not Travel	238	10,000	-	(10,000)	-100.00%
Travel	8,228	25,000	-	(25,000)	-100.00%
Travel/Cash Advance	11,190	10,000	-	(10,000)	-100.00%
Purchase Bulk Airline	-	10,000	-	(10,000)	-100.00%
Other Services NOC	473	6,000	-	(6,000)	-100.00%
<b>Peace Officer Training Fund Total-2284</b>	<b>42,994</b>	<b>148,500</b>	<b>-</b>	<b>(148,500)</b>	<b>-100.00%</b>
<b>USDHS Asset Forfeiture Fund</b>					
Professional Services	4,600	-	-	-	-
<b>USDHS Asset Forfeiture Fund Total -2169</b>	<b>4,600</b>	<b>-</b>	<b>-</b>	<b>-</b>	<b>-</b>
<b>Other Services and Charges</b>	<b>\$8,002,461</b>	<b>\$12,482,029</b>	<b>\$13,224,861</b>	<b>\$742,832</b>	<b>5.951%</b>

*Exhibit IV*

A total of **\$100,000 in credit card expenses** is recorded under the “Other Services & Charges” line item for Fiscal Year 2026. According to the VIPD, these charges are related to the *procurement and maintenance of ShotSpotter technology*; a gunshot detection system used to enhance real-time response and investigative capabilities in high-crime areas.

## EXPENDITURES

*Exhibit V* displays the expenditure breakdown provided by the *Virgin Islands Police Department* for the General Fund; FY 2024 actuals, FY 2025 expenditures as of June 30, 2025, and FY 2026 requests.

EXPENDITURES ACCORDING TO VIPD	FISCAL PERIOD		
Fiscal Period	Oct. 1, 2023- Sep. 30, 2024	Oct. 1, 2024- June 30, 2025	FY 2026 Request
<b>Personnel Services</b>			
Classified Employee Salaries	\$18,310,376	\$11,896,183	\$23,441,927
Unclassified Empl. Salaries	4,437,136	2,795,660	6,027,039
Temp/Part Time Salaries	736,466	527,822	184,290
Overtime Salaries	24,126,043	11,836,506	8,000,000
Lump Sum Payments	270,748	379,551	21,000
Night Differential Comp	643,768	365,665	644,000
Other Differential Comp	59,180	119,424	-
Special Train Comp	2,833	-	-
Fees & Compensation Noc	456,733	199,230	297,200
Holiday Pay	1,859,326	1,606,036	1,730,000
<b>All Other:</b>			
Sick Pay	1,313,182	872,742	-
Accrued Leave Pay	1,879,202	1,243,134	-
Administrative Leave Pay	481,623	338,462	-
Funeral	23,498	26,619	-
Jury Service	916	519	-

EXPENDITURES ACCORDING TO VIPD	FISCAL PERIOD		
Fiscal Period	Oct. 1, 2023- Sep. 30, 2024	Oct. 1, 2024- June 30, 2025	FY 2026 Request
Military Leave	205,749	163,888	-
<b>Sub-Total</b>	<b>54,806,482</b>	<b>32,371,441</b>	<b>40,345,456</b>
<b>Fringe Benefits</b>			
Employer Contr. Retirement	6,059,602	4,050,616	6,136,969
F.I.C.A.	3,108,032	1,893,814	2,519,126
Medicare	794,330	469,281	585,010
Health Insurance Premium	5,842,280	3,902,114	5,762,284
Workers Comp. Premiums	-	235,396	265,858
Uniform Allowance	182,600	85,808	176,000
<b>Sub-Total</b>	<b>15,986,844</b>	<b>10,637,029</b>	<b>15,445,247</b>
<b>Supplies</b>			
Office Supplies	40,483	44,451	66,850
Operating Supplies	328,598	283,154	882,500
Small Tools/Minor Equipment	519,481	109,276	1,045,600
<b>All Other:</b>			
Vehicle Supplies	904,526	958,547	1,405,000
Repair & Maintenance Supplies	109,952	74,219	63,600
Food	86,123	83,519	122,500
Professional Books & Periodicals	22,583	7,428	28,000
Data Processing Software	332,930	276,247	1,048,625
Clothing & Cloth Material	50,256	54,725	125,000
<b>Sub-Total</b>	<b>2,394,933</b>	<b>1,891,567</b>	<b>4,787,675</b>
<b>Other Services &amp; Charges</b>			
Professional Services	2,676,589	1,228,703	3,970,678
Communication	666,114	519,014	946,410
Travel	250,440	191,218	698,440
Transportation - Not Travel	122,459	116,004	106,161
Advertising And Promotion	280,891	312,695	270,000
Printing And Binding	31,001	39,963	32,000
Repairs And Maintenance	529,329	621,863	409,000
Rental- Land/Building	1,350,787	1,075,447	2,528,042
Rental - Machines/ Equipment	291,196	216,761	311,611
Training	49,195	16,133	240,000
<b>All Other:</b>			
Debris Removal	7,804	-	8,760
Automotive Repairs & Maintenance	61,660	43,763	101,000
In & Outpatient Services	54,405	16,511	55,000
Travel Cash Advance	120,276	13,202	95,000
Purchase Bulk Airline Tickets	102,639	61,865	113,000
Other Services Noc	308,980	15	180,000
Other Services Noc- Insurance	-	-	2,500
Credit Card Expenses	-	22,085	100,000
Membership Dues	1,550	60,869	-
Grants to Private Agencies(Teenage Driving Programs, etc)	-	100,000	-
Transfer Out Genera Fund - POST	-	250,000	-
<b>Sub-Total</b>	<b>6,905,305</b>	<b>4,906,111</b>	<b>10,519,602</b>
<b>Capital Outlays</b>			
Machinery & Equipment	95,700	-	220,000
<b>All Other:</b>			
Building & Improvement	-	-	25,000

EXPENDITURES ACCORDING TO VIPD	FISCAL PERIOD		
Fiscal Period	Oct. 1, 2023- Sep. 30, 2024	Oct. 1, 2024- June 30, 2025	FY 2026 Request
Repairs & Renovations	-	-	65,000
Improvement to Building	-	-	95,000
Improvement Other Than Building	-	-	10,000
CAP Computer Hardware	-	-	25,000
<b>Sub-Total</b>	<b>95,700</b>	-	<b>440,000</b>
<b>Utility Services</b>			
Electricity	1,459,460	866,178	1,396,138
Water	394,681	231,048	405,048
<b>Sub-Total</b>	<b>1,854,141</b>	<b>1,097,226</b>	<b>1,801,186</b>
<b>Total Expenses</b>	<b>\$82,043,405</b>	<b>\$50,903,374</b>	<b>\$73,339,167</b>

Exhibit V

### Overtime Salaries Overview

The department reported **overtime salary expenditures** of **\$24,126,043** for Fiscal Year 2024. As of June 30, 2025, **\$11,836,506** has been expended in overtime for Fiscal Year 2025, representing a **50.9% decrease compared to the prior year**.

Looking ahead, the Department has projected overtime expenses at **\$8,000,000** for Fiscal Year 2026, which **reflects an additional 32.4% decrease from the FY 2025 amount** (*based on expenditures to date*) and a 66.8% decrease when compared to FY 2024.

### PERSONNEL SERVICES

The Governor's General Fund recommendation for the Virgin Islands Police Department allocates **\$40,345,456** for personnel services in Fiscal Year 2026, representing a **\$505,896 (1.2%) decrease** from the **FY 2025 appropriation of \$40,851,352**. Despite the slight reduction in funding, the Department's **authorized staffing level increased from 517.50 positions in FY 2025 to 533.50 positions in FY 2026**, reflecting a net gain of **16 full-time equivalent positions**. *See Appendix II* for the department's personnel listing.

VIPD			Position Classification				
Fiscal Year 2026			Unclassified		Classified		Adjustments
Fund Name	Pos #	FY 2026 Budget	Pos #	Total	Pos #	Total	
General Fund – 0100	505.50	\$40,345,456	79.50	\$6,027,038	426.00	\$23,626,218	\$10,692,200
Federal Fund- 3100	28.00	1,706,736	25.00	1,195,107	3.00	147,516	364,113
Grand Total	533.50	\$42,052,192	104.50	\$7,222,145	429.00	\$23,773,734	\$11,056,313

VIPD			Position Classification				
Fiscal Year 2025			Unclassified		Classified		Adjustments
Fund Name	Pos #	FY 2025 Budget	Pos #	Total	Pos #	Total	
General Fund – 0100	505.00	\$40,851,352	79.50	\$5,866,304	425.50	\$24,233,758	\$10,751,290
Federal Fund- 3100	8.00	857,425	6.00	417,000	2.00	106,563	333,862
Other Fund- 2284	4.50	281,000	4.50	281,000	-	-	-
Other Fund- 6068	-	1,400,000	-	-	-	-	1,400,000
Grand Total	517.50	\$43,389,777	90.00	\$6,564,304	427.50	\$ 24,340,321	\$12,485,152

Exhibit VI

## LEASES

*Exhibit VII* displays a listing of the VIPD's leases

LESSOR	ADDRESS	SQUARE FOOTAGE	ANNUAL RENT	TERM	FUNDING SOURCE
East End Plaza (East End Substation)	Parcel 17B-1, Ste #124, Smith Bay	-	\$1.00	Lease Renewal Pending (Exp Jul 31, 2018)	Gen. Fund
Humane Society (K9 Facility - Proposed)	Parcel 2F, Estate Donoe	-	1.00	Jan 1, 2011 - Dec 31, 2061	Gen. Fund
Property & Procurement (Impound Lot)	Parcel No. 92C Submarine Base, No 6 Southside Quarter, STT	14,378	1,200	Occupancy MOU signed Jun 3, 2021 (Eff. Sep 1, 2017 - until modified by either VIPD or DPP.	Gen. Fund
Property & Procurement (Forensic Office Bldg.)	Parcel No. B4, Subbase	9,336	1,200	Occupancy MOU signed Jun 3, 2021 (Eff. Sep 1, 2017 - until modified by either VIPD or DPP.	Gen. Fund
Property & Procurement (Warehouse - Area 51)	Warehouse #26, Krum Bay Lane	840	8,400	Occupancy MOU signed Jun 3, 2021 (Eff. Sep 1, 2017 - until modified by either VIPD or DPP.	Gen. Fund
Virgin Islands Housing Authority (Crime Prevention & School Security)	No. 215 Anna's Retreat	3,648	1.00	June 1, 2021 - May 31, 2022, + 6 Mo Ext./VI Housing) Pending Approval	Gen. Fund
PRIME /Fortress Storage (Bike Unit)	9160 Estate Thomas, A020	10x25 unit	6,600	Pending review and approval	Gen. Fund
Blue Anchor (Al Cohens, Haven sight) (NEW)	Alton Adams Building 1 B Kongens Gade, Suites A,B, & C	-	355,400	Nov 1,2022 -Oct 31, 2027,	Gen. Fund
Ross Estate Ltd, Partnership(IAU)	8 AC Estate Ross	1,600	41,058	Oct 1,2014-Sept 30,2021 plus one year extension	Gen. Fund
Gottlieb (NEW)	Parcel 2 Estate Contant		78,000	Feb 1, 2023 - Jan 31, 2028	Gen Fund
GERS (NEW)	Kronprindsens Quarter, St. Thomas	-	107,220	Jan 1, 2024 - Dec 31, 2029	Gen Fund
Sea Glass Properties, Electric Bldg (NEW)	74 Contant, St. Thomas	-	106,250	Jan 1, 2024 - Dec 31, 2029	Gen. Fund
VI Port Authority Parking (NEW)	Red Hook, St. Thomas	-	9,600	May 1,2023 - Apr 30,2028	Gen. Fund
Four Winds Plaza (NEW)		-	18,000	April1, 2025 -Sept,20,2030	Gen. Fund
Sea Glass Properties, Guardian Bldg (NEW)	14 -A Thomas, St. Thomas	-	52,000	Jan 1, 2024 - Dec 31, 2029	Gen. Fund
Facility Rental PAL Summer Camp STT	TBD	-	3,000	Oct 1, 2025- Sept 30, 2026	Gen. Fund
<b>Subtotal- STT</b>		<b>29,802</b>	<b>787,931</b>		
Gertrude T. Gumbs (Motorpool - STX)	#100 Castle Coakley	11,792	101,742	Feb 1, 2020 - Jan 30, 2025, + 1 Yr. Ext	Gen. Fund
Hannah's Rest (HR & IAU)	#50G, Est. Hannahs Rest	5,690	55,360	Jun 1, 2019 - May 31, 2025, + 1 Yr. Ext.	Gen. Fund
Jolly Hill Realty Corp. (OHS)	Rem. Plot #33-B & 33-A Est. Two Brothers & Smithfield	2,760	48,920	Apr 1, 2016 - Mar 31, 2023, + 1 Yr. Ext.	Gen. Fund
Michael A. Simmonds (C'sted)	#19 & 20 Bassin Triangle	2,400	37,600	Jul 1, 2015 - Jun 30, 2021, + 1 Yr. Ext.	Gen. Fund
Rainbow Plaza, Inc. (Police Admin)	#45 Mars Hill	24,808	347,312	Aug 1, 2015 - Jul 31, 2025, + 5 Yr. Ext.	Gen. Fund
Rainbow Plaza, Inc. (Support Services)	#45 Mars Hill	2,701	37,814	Aug 1, 2015 - Jul 31, 2025, + 1 Yr. Ext.	Gen. Fund



LESSOR	ADDRESS	SQUARE FOOTAGE	ANNUAL RENT	TERM	FUNDING SOURCE
Shuama Rental Properties LLC	#59 Castle Coakley	9,000	234,000	Dec 1, 2018 - Nov 30, 2023, + 1 Yr. Ext.	Gen. Fund
Strand Square LLC (Bike Unit F'sted)	#1 Strand St. & #70 King St	957	13,838	May 1, 2019 - Apr 30, 2022, + 1 Yr. Ext.	Gen. Fund
Wook Suh (Behavioral Science)	Beeston Hill Med. Center #5	1,250	30,025	Jun 1, 2019 - May 30, 2024, + 1 Yr. Ext.	Gen. Fund
St. Croix Marksmanship	St. Croix	-	38,500	Oct 1, 2025-Sept 30, 2026	Gen. Fund
Facility Rental HR	St. Croix	-	12,000	Oct 1, 2025- Sept 30, 2026	Gen. Fund
Zefo's Enterprises - VIPD (NEW)	3-C Estate Hogenborg	-	780,000	Dec 1, 2025-Nov 30,2030	Gen. Fund
Facility Rental PAL Summer Camp STx	TBD	-	3,000	Oct 1, 2025- Sept 30, 2026	Gen. Fund
<b>Subtotal-STX</b>		<b>61,358</b>	<b>1,740,111</b>		
<b>Grand Total</b>		<b>91,160</b>	<b>\$2,528,042</b>		

*Exhibit VII*

### **PROFESSIONAL SERVICES CONTRACTS**

*Exhibit VIII* provides a listing of the Virgin Islands Police Department's (VIPD) active Professional Services Contracts, totaling approximately **\$3.9M**.

VENDOR	ANNUAL AMOUNT	PURPOSE	TYPE OF SERVICE	TERM
Atlantic Maintenance - STX	\$35,000	Trash Removal	Maintenance	10/25-10/26
AXON Instructor Certification	12,000	Training	Training	10/24-10/25
Bronx Communication	11,000	Remote System & Radio Programming	IT Support	10/25-10/26
Beautiful Dreamers	70,000	Psychological Support	Psychological Servies	10/25-1026
Ballistic Analysis	100,000	Ballistic Analysis	Evidence Screening	10/25-10/26
Jensen Hughes, Inc	821,376	IMT Monitor	Independent Monitor	10/25-10/26
De'luxe Dynamics	5,240	Landscaping	Maintenance	10/25-10/26
Alena d/b/a Double A Cleaning	49,200	Janitorial	Maintenance	10/25-10/26
Exquisite Lawn Care and PR	7,200	Landscaping	Maintenance	10/25-10/26
DNA Labs International	450,000	DNA Evidence Screening	Evidence Screening	10/25-10/26
Auto Mechanics Certifications	30,000	Training	Training	10/25-10/26
High Grade Cleaning - STT	55,393	Janitorial	Maintenance	10/25-10/26
Jaydees Building Maintenance	50,230	Janitorial	Maintenance	10/25-10/26
Lawn Care Landscaping	24,000	Landscaping	Maintenance	10/25-10/26
LLMRI	20,000	Training	Training	10/25-10/26
OCEAN PEST	5,200	Landscaping	Maintenance	10/25-10/26
Oliver Exterminating	12,300	Exterminating Services	Maintenance	10/25-10/26
OMNI Systems	260,800	Technical Services to augment IT staff	IT Support	10/25-10/26
PATC	15,000	Training	Training	10/25-10/26
Prosperity Cleaning	13,500	Janitorial Services	Maintenance	10/25-10/26
SF General Maintenance	35,000	Floor Polishing and Buffing Office Furniture	Professional Services	10/24-10/25

VENDOR	ANNUAL AMOUNT	PURPOSE	TYPE OF SERVICE	TERM
SHOTSPOTTERS	1,000,000	Gun Shot Detection System	Gunshot Detection	10/25-10/26
Use Force Instructor Certification	15,000	Training	Training	10/25-10/26
TBD (AC SERV AGREE) #1	50,000	Air Conditioner	Maintenance	10/25-10/26
TBD (AC SERV AGREEMENT 2)	50,000	Air Conditioner	Maintenance	10/25-10/26
TBD (Generator Service)	95,000	Generator	Maintenance	10/25-10/26
TBD (Generator Service)	95,000	Generator	Maintenance	10/25-10/26
TBD( Bottled Water Services)	15,000	Bottled Water	Maintenance	10/25-10/26
TBD ( MOLD Remediation)	30,000	Mold Remediation	Maintenance	10/25-10/26
TBD( Bottled Water Services)	15,000	Bottled Water	Maintenance	10/25-10/26
TBD ( MOLD Remediation)	30,000	Mold Remediation	Maintenance	10/25-10/27
TBD	20,000	After School Support	Professional Services	10-25-10/26
TBD	20,000	Afters school Support	Professional Services	10-25-10/26
TBD	5,000	After School Support	Professional Services	10-25-10/26
TBD	5,000	After School Support	Professional Services	10-25-10/26
Cleaning - Janitorial	37,000	Janitorial	Maintenance	10/25-10/26
Cleave Wilson/Wilson Janitorial Services	200,000	Janitorial	Maintenance	10/25-10/26
Real Tech Exterminating-STX	10,240	Exterminating	Maintenance	10/25/10/26
UVI CELL	6,000	Training	Training	10/25-10/26
V. I. Cleaning Services	190,000	Landscaping	Maintenance	10/25-10/26
<b>Total</b>	<b>\$3,970,679</b>			

*Exhibit VIII*

### **CONTRACTS LISTING**

The department reported **\$5.9M** in Contracts

Vendor	Term	Type of Service	Amount
ShotSpotter Inc.	06/30/2024-06/29/2027	Maintenance of Subscription gun location, alert, analysis	\$2,779,809
DNA Lab International	10/01/2024-9/30/2025	DNA Testing Services	450,000
Jensen Hughes, Inc.	12/01/2024-3/30/2027	Review and evaluate compliance – Consent Decree	1,916,543
Smartnet	10/23/2024-10/23/2027	Provide wide area network and high-speed internet managed services	848,862
<b>Grand Total</b>			<b>\$5,995,214</b>

*Exhibit IX*

## **FEDERAL GRANTS**

*Exhibit X* presents a detailed listing of the VIPD's active federal grants, including grant titles, funding sources, award amounts, and current statuses. These grants support a range of initiatives such as equipment acquisition, training, technology upgrades, and traffic safety programs.

Grant Title	Budget Period	Funding Agency	Amount	Balance
CIP-USVI Security Cameras Project	02/03/2020-01/31/2026	US Dept. of Justice	\$1,500,000	\$24,260
Marine Enforcement Vessels	10/01/2023-09/30/2026	US Dept. of Interior	3,984,000	3,984,000
VIPD Construction of Real Time Crime Center	10/01/2022-09/30/2027	US Dept. of Interior	2,000,000	2,000,000
2024 COPS Hiring Program	10/01/2024-09/30/2029	US Dept of Interior	3,967,740	3,967,740
<b>Subtotal</b>			<b>11,451,740</b>	<b>9,976,000</b>
USVI 2024 FMCSA - Commercial Vehicle Safety Plan	10/01/2023-09/30/2026	US Dept of Transportation	596,198	577,559
USVI 2023 FMCSA - Commercial Vehicle Safety Plan	10/1/2022-9/30/2025	US Dept of Transportation	586,391	531,141
Planning & Administration Project	10/01/2024-09/30/2025	US Dept of Transportation	265,818	256,596
Occupant Protection Program Management Project	10/1/2024-9/30/2025	US Dept of Transportation	226,470	191,949
Traffic Records Program Management Project	10/1/2024-9/30/2025	US Dept of Transportation	272,898	249,272
Impaired Driving Program Management Project	10/1/2024-9/30/2025	US Dept of Transportation	151,885	124,540
USVI CY 2025/2026 Seatbelt Survey Project	10/1/2024-9/30/2025	US Dept of Transportation	232,300	232,300
Media Communications Program Management Project	10/1/2024-9/30/2025	US Dept of Transportation	146,278	146,278
Impaired Driving Program Drive Safe Outreach	10/1/2024-9/30/2025	US Dept of Transportation	239,420	239,420
Occupant Protection Program - CPS Technician Training Project	10/1/2024-9/30/2025	US Dept of Transportation	43,177	43,177
Occupant Protection Program - CPS Fitting Stations Project	10/1/2024-9/30/2025	US Dept of Transportation	76,112	76,112
Occupant Protection Program - Teen Drivers Awareness Stations Project	10/1/2024-9/30/2025	US Dept of Transportation	80,109	49,554
Impaired Driving Overtime Enforcement - STX	10/1/2023-9/30/2025	US Dept of Transportation	164,977	164,977
Impaired Driving Overtime Enforcement - STT/STJ	10/1/2023-9/30/2025	US Dept of Transportation	99,647	99,647
Occupant Protection Program - Heatstroke Prevention	10/1/2024-9/30/2025	US Dept of Transportation	61,193	61,193
Traffic Records Program-OEMS DATA SUPPORT Project	10/1/2024-9/30/2025	US Dept of Transportation	44,749	34,849
Traffic Records Program-BMV Points System Project	2/27/2024-9/30/2026	US Dept of Transportation	238,338	145,900
<b>Subtotal -Office of Highway Safety</b>			<b>3,525,961</b>	<b>3,224,464</b>

Grant Title	Budget Period	Funding Agency	Amount	Balance
Hazard Mitigation Grant Program-St. Croix Motor Pool Generator Project	05/19/2021 - Pending FEMA Extension	VITEMA	44,340	44,340
Hazard Mitigation Grant Program - Training Academies Generators Project	08/18/2021 - Pending FEMA Extension	VITEMA	226,584	226,584
Hazard Mitigation Grant Program - Patrick Sweeney Headquarters Retrofit & Safe Room Project	1/5/2022 - Pending FEMA Extension	VITEMA	12,348,549	11,846,661
Hazard Mitigation Grant Program - Leander Jurgen Command Hurricane Wind Retrofit Project	11/25/2019-09/30/2026	VITEMA	253,396	253,396
<b>Subtotal</b>			<b>12,872,869</b>	<b>12,370,981</b>
Homeland Security Grants Program - 2021 Operation Stone Garden	10/1/2021-08/31/2025	US Department of Justice / LEPC	100,000	6,500
2021 Homeland Security Grants Program (HSGP)	09/1/2021-08/31/2025	US Department of Justice / LEPC	56,610	-
2021 VAWA-Virgin Islands Police Department Violence Against Women	12/01/2023-08/31/2025	US Department of Justice / LEPC	105,819	61,742
Homeland Security Grants Program - 2022 Operation Stone Garden	09/01/2022-08/31/2025	US Dept of Homeland Security / VITEMA	85,000	45,872
2022 Homeland Security Grants Program (HSGP)	09/01/2022-08/31/2025	US Dept of Homeland Security / VITEMA	50,000	45,109
Homeland Security Grants Program - 2023 Operation Stone Garden	09/01/2023-08/31/2026	US Dept of Homeland Security / VITEMA	85,000	84,500
2023 Homeland Security Grants Program (HSGP) - Election Soft Target	09/01/2023-08/31/2026	US Department of Justice / LEPC	50,000	50,000
Homeland Security Grants Program - 2024 Operation Stone Garden	09/01/2023-08/31/2027	US Dept of Homeland Security / VITEMA	54,345	54,345
2024 Homeland Security Grants Program (HSGP) - SWAT Team Soft Target Training	09/01/2023-08/31/2027	US Dept of Homeland Security / VITEMA	152,500	152,500
<b>Subtotal-VIPD Sub -Grants</b>			<b>739,274</b>	<b>500,569</b>
<b>Grand Total</b>			<b>\$28,589,844</b>	<b>\$26,072,013</b>

*Exhibit X*

## REVENUES

For Fiscal Year 2025, the VIPD reported total revenues of **\$608,756**. Listed by district, revenues incurred from 10/01/2024 through 07/31/25 represent approximately **0.85%** of the total appropriation received.

Services	STT/STJ	STX	Total
Police Records	\$95,424	\$55,865	\$151,289
Traffic Records	14,843	6,688	21,531
Police/ Traffic Reports	33,604	14,482	48,088
Fingerprints	20,360	21,000	41,360
Business License	-	120	120
Watchman Guard Patrol Company(Office Fee, Application Fee)	5,650	-	5,650

Services	STT/STJ	STX	Total
Watchman Guard Patrol Contractor ( Late Fee, Application Fee)	450	-	450
Private Investigative Agency (Office Fee, Application Fee, Late Fee)	3,900	-	3,900
Private Investigative Detective (Detective License, Application Fee)	200	-	200
<b>Firearms Bureau</b>			
Firearms Applications	6,748	4,335	11,083
Firearms Registrations	23,175	22,375	45,550
Firearms Renewal	94,395	95,717	190,112
Firearms Duplicate	330	15	345
Firearms Fines	1,460	420	1,880
<b>Subtotal- Firearms Bureau</b>	<b>126,108</b>	<b>122,862</b>	<b>248,970</b>
<b>Police Services</b>			
Carnival Permits ( per day)	-	3,475	3,475
Special Permits	-	18,563	18,563
Traffic Obstruction	13,800	350	14,150
Escort Service	7,700	-	7,700
Escort Per Officer	-	4,638	4,638
Emergency Parking	700	-	700
Vendors Permits	3,700	75	3,775
Liquor Permits	12,300	700	13,000
Watchman's License late fee	400	-	400
Miscellaneous (PD Towing)	150	-	150
Miscellaneous (Barricades)	925	225	1,150
Miscellaneous (Shooting Range)	19,500	-	19,500
<b>Subtotal- Police Services</b>	<b>59,175</b>	<b>28,026</b>	<b>87,201</b>
<b>Grand Totals</b>	<b>\$359,714</b>	<b>\$249,042</b>	<b>\$608,756</b>

*Exhibit XI*

## VEHICLE SUMMARY

The Department has a total of 381 vehicles. Two hundred and twelve (212) vehicles for the District of St. Thomas/St. John and Water Island (*82 Units Down, 10 Wrecks, 3 in Body Shop*). St. Croix District has one hundred and sixty-nine (169) vehicles (*25 Units Down, 8 Wrecks, 8 in Storage, 3 Collision*). Gasolene charges are **\$1,226,685** (STT-\$651,385, STX-\$575,000). Maintenance charges are **\$78,204** (STT-\$28,916, STX-\$49,288). *See Appendix I for a complete vehicles listing.*

## OUTSTANDING OBLIGATIONS

The department reported **\$333,032** in outstanding obligations as of June 30, 2025.

Vendor	Description	Total	Funding Source	Reason for non-Payment
Atlantic Trucking	Bldg. Maintenance-Trucking	\$45,699	General Fund	Prior Year Obligations
Blue Mountain	Bldg. Maintenance-Water	6,048	General Fund	Prior Year Obligations
Caribbean Cooling	Bldg. Maintenance-A/C Repairs	20,000	General Fund	Prior Year Obligations



<b>Vendor</b>	<b>Description</b>	<b>Total</b>	<b>Funding Source</b>	<b>Reason for non-Payment</b>
Dial Rent to Own	Bldg. Maintenance-Storage	35,000	General Fund	Prior Year Obligations
SD & J Construction	Bldg. Maintenance-Repairs	15,000	General Fund	Prior Year Obligations
Virgin Islands Cleaning Services	Bldg. Maintenance-Janitorial	111,285	General Fund	Missed Entry/ Vendor failed to submit invoice timely
Wilson Janitorial	Bldg. Maintenance-Janitorial	100,000	General Fund	Prior Year Obligations
<b>Grand Total</b>		<b>\$333,032</b>		

*Exhibit XII*

## **SUMMARY**

The Virgin Islands Police Department FY 2026 Governor's recommended budget are as follows:

<b>FY 2026</b>	
\$73,339,967	Governor's General Fund Recommendation
2,615,068	Miscellaneous Section
<b>75,955,035</b>	<b>Total Governor's Recommendation</b>
3,000,000	Tourism Advertising Revolving Fund
584,314	Peace Officer Training Fund
11,714,637	Federal Funds
<b>\$91,253,986</b>	<b>Total Operating Budget</b>



Theodora Philip, DBA

Post Auditor

# APPENDIX I

## VEHICLE LISTING

### ST. THOMAS/ ST. JOHN/ WATER ISLAND DISTRICT

MAKE	MODEL	YEAR	PLATE #	FUNDING	CONDITION/ COMMENTS
FORD	ESCAPE	2021	GVI-10	FEDERAL	IN SERVICE
FORD	ESCAPE	2021	GVI-12	FEDERAL	IN SERVICE
FORD	ESCAPE	2024	GVI-64	FEDERAL	IN SERVICE
FORD	ESCAPE	2024	GVI-70	FEDERAL	IN SERVICE
FORD	EXPLORER	2023	THK-089	FEDERAL	IN SERVICE
FORD	EXPLORER	2023	THM-236	FEDERAL	IN SERVICE
CHEVY	TRAVERSE	2022	THM-258	FEDERAL	IN SERVICE
CHEVY	TRAVERSE	2022	THR-202	FEDERAL	IN SERVICE
FORD	EXPLORER	2023	THR-230	FEDERAL	IN SERVICE
FORD	EXPLORER	2023	THR-283	FEDERAL	IN SERVICE
FORD	EXPLORER	2020	THR-209	FEDERAL	IN SERVICE
FORD	ESCAPE	2021	GVI-14	FEDERAL	IN SERVICE
FORD	EXPLORER	2022	THC-797	FEDERAL	IN SERVICE
FORD	INTERCEPTOR	2018	THR-206	LOCAL	IN SERVICE
FORD	EXPLORER	2021	THR-239	FEDERAL	IN SERVICE
FORD	EDGE	2017	THR-257	LOCAL	IN SERVICE
FORD	EXPLORER	2014	THR-258	LOCAL	IN SERVICE
FORD	T-350 CONNECT	2024	THR-243	FEDERAL	IN SERVICE
FORD	INTERCEPTOR	2017	THR-270	LOCAL	IN SERVICE
FORD	EXPLORER	2022	THM-277	FEDERAL	IN SERVICE
FORD	EXPLORER	2022	THL-941	FEDERAL	IN SERVICE
FORD	INTERCEPTOR	2021	PD-314	FEDERAL	IN SERVICE
FORD	INTERCEPTOR	2018	PD-178	LOCAL	IN SERVICE
FORD	EXPLORER	2022	PD-293	FEDERAL	IN SERVICE
FORD	INTERCEPTOR	2021	PD-298	FEDERAL	IN SERVICE
FORD	INTERCEPTOR	2021	PD-316	FEDERAL	IN SERVICE
FORD	EXPLORER	2022	PD-299	FEDERAL	IN SERVICE
FORD	EXPLORER	2022	PD-322	FEDERAL	IN SERVICE
SMART	ELECTRIC	2018	PD-134	DONATED	IN SERVICE
SMART	ELECTRIC	2018	PD-138	DONATED	IN SERVICE
FORD	ESCAPE	2018	PD-263	LOCAL	IN SERVICE
SUZUKI	VL800	2009	03-PD	LOCAL	IN SERVICE
FORD	EXPLORER	2022	PD-349	FEDERAL	IN SERVICE
FORD	INTERCEPTOR	2021	PD-292	FEDERAL	IN SERVICE
FORD	INTERCEPTOR	2021	PD-312	FEDERAL	IN SERVICE
FORD	F-550	2004	PD-256	PFA	IN SERVICE
MOBILE	MOBILE	MOBILE	PD-254	LOCAL	IN SERVICE
FORD	EXPLORER	2022	PD-338	FEDERAL	IN SERVICE
FORD	EXPLORER	2022	PD-340	FEDERAL	IN SERVICE
FORD	INTERCEPTOR	2018	PD-152	LOCAL	IN SERVICE

MAKE	MODEL	YEAR	PLATE #	FUNDING	CONDITION/ COMMENTS
FORD	EXPLORER	2022	PD-332	FEDERAL	IN SERVICE
FORD	EXPLORER	2022	PD-346	FEDERAL	IN SERVICE
FORD	INTERCEPTOR	2021	PD-294	FEDERAL	IN SERVICE
FORD	INTERCEPTOR	2018	PD-168	LOCAL	UNIT DOWN
FORD	INTERCEPTOR	2018	PD-142	LOCAL	UNIT DOWN
FORD	INTERCEPTOR	2021	PD-302	FEDERAL	IN SERVICE
FORD	INTERCEPTOR	2018	PD-166	LOCAL	IN SERVICE
FORD	ESCAPE	2018	PD-278	LOCAL	UNIT DOWN
FORD	INTERCEPTOR	2014	PD-50	LOCAL	UNIT DOWN
CHEVY	ENVOY	2009	PD-96	LOCAL	UNIT DOWN
FORD	ESCAPE	2018	PD-272	LOCAL	UNIT DOWN
FORD	EXPLORER	2022	PD-337	FEDERAL	IN SERVICE
FORD	INTERCEPTOR	2018	THR-299	LOCAL	IN SERVICE
FORD	INTERCEPTOR	2021	PD-304	FEDERAL	IN SERVICE
FORD	INTERCEPTOR	2021	PD-308	FEDERAL	IN SERVICE
FORD	INTERCEPTOR	2018	PD-146	LOCAL	IN SERVICE
FORD	INTERCEPTOR	2014	PD-56	LOCAL	UNIT DOWN
FORD	ESCAPE	2018	PD-270	LOCAL	IN SERVICE
FORD	ESCAPE	2018	PD-266	LOCAL	UNIT DOWN
FORD	TAURUS	2016	TFS-838	LOCAL	IN SERVICE
FORD	F-150	2022	PD-288	FEDERAL	UNIT DOWN
OFFICE	MOBILE	2006	PD-70	PFA	UNIT DOWN
FORD	INTERCEPTOR	2013	PD-206	LOCAL	UNIT DOWN
FORD	INTERCEPTOR	2013	PD-210	LOCAL	IN SERVICE
FORD	INTERCEPTOR	2014	PD-114	LOCAL	UNIT DOWN
FORD	F-150	2022	PD-172	FEDERAL	IN SERVICE
FORD	F-150	2022	PD-116	FEDERAL	UNIT DOWN
FORD	F-150	2022	PD-356	FEDERAL	IN SERVICE
FORD	F-150	2022	PD-310	FEDERAL	IN SERVICE
FORD	ESCAPE	2018	PD-265	LOCAL	UNIT DOWN
FORD	ESCAPE	2018	PD-264	LOCAL	UNIT DOWN
FORD	TRANSIT	2017	PD-196	LOCAL	UNIT DOWN
CHEVY	ENVOY	2009	THR-287	LOCAL	UNIT DOWN
GMC	TERRAIN	2012	THR-237	FEDERAL	UNIT DOWN
FORD	EXPLORER	2022	THK-767	FEDERAL	IN SERVICE
FORD	EDGE	2017	THR-287	LOCAL	IN SERVICE
FORD	INTERCEPTOR	2014	PD-240	LOCAL	IN SERVICE
FORD	INTERCEPTOR	2014	PD-228	LOCAL	IN SERVICE
FORD	INTERCEPTOR	2014	PD-232	LOCAL	IN SERVICE
FORD	INTERCEPTOR	2018	PD-164	LOCAL	IN SERVICE
FORD	EXPLORER	2022	PD-329	FEDERAL	IN SERVICE
FORD	EXPLORER	2022	PD-307	FEDERAL	IN SERVICE
FORD	EXPLORER	2022	PD-328	FEDERAL	IN SERVICE
FORD	INTERCEPTOR	2014	PD-236	LOCAL	IN SERVICE
FORD	INTERCEPTOR	2014	PD-230	LOCAL	IN SERVICE
FORD	INTERCEPTOR	2014	PD-234	LOCAL	UNIT DOWN
FORD	F-150	2023	PD-8	FEDERAL	IN SERVICE
FORD	EXPLORER	2022	PD-343	FEDERAL	IN SERVICE
CHEVY	S-2500HD	2009	PD-74	LOCAL	UNIT DOWN

MAKE	MODEL	YEAR	PLATE #	FUNDING	CONDITION/ COMMENTS
CHEVY	E-3500	2012	PD-64	LOCAL	UNIT DOWN
FORD	INTERCEPTOR	2018	PD-154	LOCAL	UNIT DOWN
FORD	INTERCEPTOR	2018	PD-170	LOCAL	IN SERVICE
FORD	INTERCEPTOR	2014	PD-82	FEDERAL	IN SERVICE
CHEVY	TAHOE	2020	PD-282	FEDERAL	IN SERVICE
CHEVY	TAHOE	2020	PD-280	FEDERAL	IN SERVICE
CHEVY	SILVERADO	2017	THR-247	FEDERAL	IN SERVICE
CHEVY	EQUINOX	2020	THR-224	FEDERAL	IN SERVICE
CHEVY	S-1500	2017	PD-90	FEDERAL	IN SERVICE
FORD	ESCAPE	2022	GVI-16	FEDERAL	IN SERVICE
FORD	EXPLORER	2022	THL-730	FEDERAL	IN SERVICE
FORD	EXPLORER	2022	THL-949	FEDERAL	IN SERVICE
FORD	EXPLORER	2022	THL-749	FEDERAL	IN SERVICE
FORD	EDGE	2017	THR-262	LOCAL	IN SERVICE
HONDA	PASSPORT	2020	THR-252	LOCAL	IN SERVICE
FORD	INTERCEPTOR	2018	THR-220	LOCAL	IN SERVICE
CHEVY	ENVOY	2009	THR-273	LOCAL	IN SERVICE
FORD	EXPLORER	2018	THR-240	LOCAL	IN SERVICE
FORD	RANGER	2023	THR-241	FEDERAL	IN SERVICE
MOBILE	MOBILE	MOBILE	YDA-084	PFA	IN SERVICE
FORD	F-250	2017	THR-293	LOCAL	IN SERVICE
FORD	EDGE	2017	THR-295	LOCAL	IN SERVICE
FORD	EXPLORER	2021	THR-216	FEDERAL	IN SERVICE
CHEVY	TRAILBLAZER	2009	THR-234	LOCAL	UNIT DOWN
FORD	EXPLORER	2022	THR-214	FEDERAL	IN SERVICE
FORD	EXPLORER	2021	TFR-253	FEDERAL	IN SERVICE
FORD	EXPLORER	2021	THR-289	FEDERAL	IN SERVICE
FORD	EXPLORER	2021	PD-290	FEDERAL	IN SERVICE
FORD	TAURUS-INT	2016	THR-215	LOCAL	UNIT DOWN
CHEVY	EQUINOX	2009	TFR-763	LOCAL	UNIT DOWN
GMC	ENVOY	2009	TFR-771	LOCAL	UNIT DOWN
ISUZU	RODEO	2009	TGB-738	LOCAL	UNIT DOWN
CHEVY	EQUINOX	2017	TFY-676	LOCAL	WRECK
CHEVY	EQUINOX	2017	THR-291	LOCAL	IN SERVICE
CHEVY	EQUINOX	2017	THR-294	LOCAL	IN SERVICE
CHEVY	C-1500	2009	PD-246	LOCAL	UNIT DOWN
GMC	ENVOY	2009	THR-286	LOCAL	UNIT DOWN
FORD	EXPLORER	2021	PD-276	FEDERAL	IN SERVICE
FORD	TRANSIT - CONNECT	2023	PD-321	FEDERAL	IN SERVICE
FORD	TRANSIT - CONNECT	2023	PD-325	FEDERAL	IN SERVICE
FORD	F-150	2022	PD-303	FEDERAL	IN SERVICE
FORD	F-150	2022	PD-319	FEDERAL	IN SERVICE
FORD	EXPLORER	2022	THR-227	FEDERAL	IN SERVICE
FORD	EXPLORER	2021	THR-225	FEDERAL	IN SERVICE
FORD	EXPLORER	2022	THH-078	FEDERAL	IN SERVICE
FORD	EXPLORER	2022	THH-075	FEDERAL	IN SERVICE
FORD	EDGE	2017	THR-212	LOCAL	IN SERVICE
FORD	EXPLORER	2021	THR-219	FEDERAL	IN SERVICE

MAKE	MODEL	YEAR	PLATE #	FUNDING	CONDITION/ COMMENTS
FORD	EXPLORER	2022	THM-234	FEDERAL	IN SERVICE
CHEVY	E-3500	2020	PD-124	LOCAL	UNIT DOWN
FORD	RANGER	2022	THR-290	FEDERAL	IN SERVICE
CHEVY	SILVERADO	2009	PD-260	LOCAL	IN SERVICE
FORD	F-150	2021	PD-208	LOCAL	IN SERVICE
CHEVY	E-3500	2020	PD-194	LOCAL	IN SERVICE
FORD	INTERCEPTOR	2018	THR-221	LOCAL	IN SERVICE
FORD	F-250	2024	GVI-56	FEDERAL	IN SERVICE
FORD	F-550	2024	PD-327	FEDERAL	IN SERVICE
FORD	F-550	2024	PD-323	FEDERAL	IN SERVICE
FORD	F-250	2023	PD-200	FEDERAL	IN SERVICE
FORD	INTERCEPTOR	2014	PD-10	LOCAL	UNIT DOWN
FORD	INTERCEPTOR	2014	PD-242	LOCAL	UNIT DOWN
FORD	INTERCEPTOR	2014	PD-76	LOCAL	UNIT DOWN
CHEVY	TAHOE	2020	PD-284	FEDERAL	UNIT DOWN
FORD	EXPLORER	2022	THR-228	FEDERAL	BODY SHOP
FORD	EXPLORER	2017	THR-213	LOCAL	UNIT DOWN
CHEVY	EQUINOX	2017	THR-298	LOCAL	BODY SHOP
FORD	TAURUS	2017	TFS-840	LOCAL	BODY SHOP
CHEVY	TRAILBLAZER	2005	PENDING	LOCAL	UNIT DOWN
FORD	INTERCEPTOR	2014	PD-16	LOCAL	UNIT DOWN
FORD	INTERCEPTOR	2013	PD-18	LOCAL	UNIT DOWN
FORD	INTERCEPTOR	2014	PD-22	LOCAL	WRECK
FORD	INTERCEPTOR	2013	PD-38	LOCAL	UNIT DOWN
FORD	INTERCEPTOR	2013	PD-40	LOCAL	UNIT DOWN
FORD	INTERCEPTOR	2014	PD-46	LOCAL	UNIT DOWN
FORD	INTERCEPTOR	2013	PD-62	LOCAL	UNIT DOWN
FORD	INTERCEPTOR	2013	PD-70	LOCAL	UNIT DOWN
FORD	INTERCEPTOR	2014	PD-72	LOCAL	UNIT DOWN
FORD	INTERCEPTOR	2014	PD-78	LOCAL	UNIT DOWN
CHEVY	COLORADO	2010	PD-86	LOCAL	WRECK
FORD	INTERCEPTOR	2014	PD-94	LOCAL	UNIT DOWN
FORD	INTERCEPTOR	2014	PD-100	LOCAL	UNIT DOWN
FORD	INTERCEPTOR	2014	PD-106	LOCAL	UNIT DOWN
FORD	INTERCEPTOR	2013	PD-108	LOCAL	UNIT DOWN
FORD	INTERCEPTOR	2013	PD-126	LOCAL	UNIT DOWN
SMART	ELECTRIC	2018	PD-136	LOCAL	UNIT DOWN
FORD	INTERCEPTOR	2018	PD-140	LOCAL	WRECK
FORD	INTERCEPTOR	2018	PD-148	LOCAL	UNIT DOWN
CHEVY	E-3500	2009	PD-150	LOCAL	UNIT DOWN
CHECY	E-3500	2009	PD-158	LOCAL	UNIT DOWN
FORD	INTERCEPTOR	2018	PD-162	LOCAL	UNIT DOWN
Chevy	Tahoe	2010	PD-172	LOCAL	WRECK
CHEVY	SUBURBAN	2004	PD-186	LOCAL	WRECK
FORD	INTERCEPTOR	2013	PD-202	LOCAL	UNIT DOWN
FORD	INTERCEPTOR	2014	PD-204	LOCAL	UNIT DOWN
FORD	INTERCEPTOR	2014	PD-212	LOCAL	UNIT DOWN
FORD	INTERCEPTOR	2013	PD-214	LOCAL	WRECK
CHEVY	S-2500	2009	PD-226	LOCAL	UNIT DOWN



MAKE	MODEL	YEAR	PLATE #	FUNDING	CONDITION/ COMMENTS
CHEVY	UPLANDER	2008	THR-296	LOCAL	UNIT DOWN
GMC	ENVOY	2009	THR-282	LOCAL	UNIT DOWN
GMC	ENVOY	2009	THR-260	LOCAL	UNIT DOWN
GMC	ENVOY	2009	TFR-800	LOCAL	UNIT DOWN
CHEVY	TRAILBLAZER	2007	TFR-796	LOCAL	WRECK
GMC	ENVOY	2009	TFR-751	LOCAL	UNIT DOWN
GMC	ENVOY	2009	PD-317	LOCAL	UNIT DOWN
FORD	INTERCEPTOR	2021	PD-306	FEDERAL	WRECK
FORD	INTERCEPTOR	2013	PD-301	LOCAL	UNIT DOWN
FORD	INTERCEPTOR	2021	PD-300	FEDERAL	UNIT DOWN
FORD	ESCAPE	2018	PD-274	LOCAL	UNIT DOWN
FORD	ESCAPE	2018	PD-268	LOCAL	UNIT DOWN
FORD	INTERCEPTOR	2018	PD-262	LOCAL	UNIT DOWN
FORD	ESCAPE	2018	PD-261	LOCAL	UNIT DOWN
FORD	INTERCEPTOR	2014	PD-238	LOCAL	UNIT DOWN
FORD	INTERCEPTOR	2018	PD-176	LOCAL	WRECK
FORD	INTERCEPTOR	2013	THR-288	LOCAL	UNIT DOWN
SUZUKI	VL800	2009	02-PD	LOCAL	UNIT DOWN
SUZUKI	VL800	2009	01-PD	LOCAL	UNIT DOWN
POLARIS	MP 875	2014	10-PD	LOCAL	UNIT DOWN
Patroller	PT SE3	2017	19-PD	LOCAL	UNIT DOWN
Patroller	PT SE3	2017	20-PD	LOCAL	UNIT DOWN
Air/wheel	30434	2017	N/A	LOCAL	UNIT DOWN
Air/wheel	30433	2017	N/A	LOCAL	UNIT DOWN
Air/wheel	30432	2017	N/A	LOCAL	UNIT DOWN
Air/wheel	30431	2017	N/A	LOCAL	UNIT DOWN

### ST. CROIX DISTRICT

MAKE	MODEL	YEAR	PLATE #	FUNDING	CONDITION/ COMMENTS
FORD	EXPLORER	2022	PD-1	FEDERAL	IN SERVICE
FORD	ESCAPE	2002	GVI-63	FEDERAL	IN SERVICE
FORD	ESCAPE	2021	GVI-23	FEDERAL	IN SERVICE
FORD	ESCAPE	2022	GVI-25	FEDERAL	IN SERVICE
FORD	EXPLORER	2022	CHZ-268	FEDERAL	IN SERVICE
FORD	EXPLORER	2022	CHZ-348	FEDERAL	IN SERVICE
FORD	INTERCEPTOR	2014	PD-7	LOCAL	IN SERVICE
FORD	INTERCEPTOR	2021	PD-111	FEDERAL	IN SERVICE
FORD	INTERCEPTOR	2014	PD-231	LOCAL	IN SERVICE
FORD	EDGE	2017	CHZ-330	LOCAL	IN SERVICE
FORD	EXPLORER	2022	CHK-534	FEDERAL	IN SERVICE
FORD	EDGE	2017	CHZ-274	LOCAL	IN SERVICE
FORD	ESCAPE	2022	GVI-65	FEDERAL	IN SERVICE
FORD	ESCAPE	2022	GVI-20	FEDERAL	IN SERVICE
FORD	ESCAPE	2022	GVI-21	FEDERAL	IN SERVICE
FORD	F-250	2023	GVI-53	FEDERAL	IN SERVICE
CHEVY	SILVERADO-2500	2009	PD-201	LOCAL	IN SERVICE
FORD	EXPLORER	2022	CHK-522	FEDERAL	IN SERVICE
FORD	EXPLORER	2022	CHK-526	FEDERAL	IN SERVICE

MAKE	MODEL	YEAR	PLATE #	FUNDING	CONDITION/ COMMENTS
FORD	INTERCEPTOR	2017	CHZ-260	LOCAL	IN SERVICE
FORD	INTERCEPTOR	2017	CHZ-261	LOCAL	IN SERVICE
FORD	EXPLORER	2022	CHD-254	FEDERAL	IN SERVICE
CHEVY	TRAVERSE	2020	CHZ-278	LOCAL	IN SERVICE
FORD	EXPLORER	2022	CHD-253	FEDERAL	IN SERVICE
FORD	INTERCEPTOR	2017	CHZ-262	LOCAL	IN SERVICE
FORD	INTERCEPTOR	2017	CHZ-257	LOCAL	IN SERVICE
CHEVY	EQUINOX	2009	CHZ-275	LOCAL	IN SERVICE
FORD	INTERCEPTOR	2014	PD-175	LOCAL	IN SERVICE
CHEVY	EXPRESS 3500	2020	PD-113	FEDERAL	IN SERVICE
CHEVY	EXPRESS 3500	2020	PD-41	LOCAL	IN SERVICE
FORD	RANGER	2017	CHZ-273	FEDERAL	IN SERVICE
FORD	EXPLORER	2022	CHZ-335	FEDERAL	IN SERVICE
FORD	TAURUS	2018	CHZ-342	LOCAL	IN SERVICE
FORD	INTERCEPTOR	2014	CHZ-267	LOCAL	IN SERVICE
FORD	INTERCEPTOR	2014	PD-149	LOCAL	IN SERVICE
FORD	INTERCEPTOR	2013	CHZ-269	LOCAL	IN SERVICE
FORD	TAURUS	2016	CHZ-332	LOCAL	IN SERVICE
FORD	EXPLORER	2022	CHZ-329	FEDERAL	IN SERVICE
FORD	EXPLORER	2022	CHZ-271	FEDERAL	IN SERVICE
FORD	EXPLORER	2022	CHZ-270	FEDERAL	IN SERVICE
FORD	EXPLORER	2022	CHZ-346	FEDERAL	IN SERVICE
FORD	EXPLORER	2022	CHK-485	FEDERAL	IN SERVICE
FORD	EXPLORER	2022	CHK-482	FEDERAL	IN SERVICE
FORRD	EXPLORER	2022	CHK-535	FEDERAL	IN SERVICE
FORD	EXPLORER	2022	CHK-525	FEDERAL	IN SERVICE
FORD	EXPLORER	2022	CHK-486	FEDERAL	IN SERVICE
FORD	EXPLORER	2022	PD-267	FEDERAL	IN SERVICE
FORD	EXPLORER	2022	PD-281	FEDERAL	IN SERVICE
FORD	F-150	2022	PD-291	FEDERAL	IN SERVICE
FORD	F-150	2022	PD-351	FEDERAL	IN SERVICE
FORD	TRANSIT	2022	PD-19	FEDERAL	IN SERVICE
FORD	TRANSIT	2022	PD-65	FEDERAL	IN SERVICE
FORD	INTERCEPTOR	2014	PD-117	LOCAL	IN SERVICE
FORD	INTERCEPTOR	2014	PD-107	LOCAL	IN SERVICE
FORD	INTERCEPTOR	2013	PD-205	LOCAL	IN SERVICE
FORD	EXPLORER	2022	PD-358	FEDERAL	IN SERVICE
FORD	INTERCEPTOR	2018	PD-219	LOCAL	IN SERVICE
FORD	INTERCEPTOR	2018	PD-209	LOCAL	IN SERVICE
FORD	INTERCEPTOR	2013	PD-159	LOCAL	IN SERVICE
FORD	INTERCEPTOR	2018	PD-17	LOCAL	IN SERVICE
FORD	INTERCEPTOR	2018	PD-131	LOCAL	IN SERVICE
FORD	INTERCEPTOR	2018	PD-225	LOCAL	IN SERVICE
FORD	INTERCEPTOR	2021	PD-269	FEDERAL	IN SERVICE
FORD	EXPLORER	2022	PD-336	FEDERAL	IN SERVICE
FORD	EXPLORER	2022	PD-320	FEDERAL	IN SERVICE
FORD	EXPLORER	2022	PD-348	FEDERAL	IN SERVICE
FORD	INTERCEPTOR	2014	PD-181	LOCAL	IN SERVICE
FORD	INTERCEPTOR	2018	PD-15	LOCAL	IN SERVICE
FORD	INTERCEPTOR	2014	PD-215	LOCAL	IN SERVICE
FORD	INTERCEPTOR	2021	PD-279	FEDERAL	IN SERVICE
FORD	INTERCEPTOR	2013	PD-203	LOCAL	IN SERVICE

MAKE	MODEL	YEAR	PLATE #	FUNDING	CONDITION/ COMMENTS
FORD	EXPLORER	2022	PD-324	FEDERAL	IN SERVICE
FORD	EXPLORER	2022	PD-335	FEDERAL	IN SERVICE
FORD	EXPLORER	2022	PD-350	FEDERAL	IN SERVICE
FORD	INTERCEPTOR	2021	PD-275	FEDERAL	IN SERVICE
CHEVY	SILVERADO-2500	2009	PD-81	LOCAL	IN SERVICE
FORD	TAURUS	2018	CHZ-280	LOCAL	IN SERVICE
CHEVY	EQUINOX	2017	CHZ-279	LOCAL	IN SERVICE
FORD	TAURUS	2018	CHZ-349	LOCAL	IN SERVICE
HONDA	PASSPORT	2021	CHZ-250	LOCAL	IN SERVICE
FORD	TAURUS -INT	2018	PD-243	LOCAL	IN SERVICE
FORD	TAURUS -INT	2018	PD-145	LOCAL	IN SERVICE
FORD	F-150	2022	GVI-44	FEDERAL	IN SERVICE
FORD	F-150	2023	GVI-59	FEDERAL	IN SERVICE
FORD	BRONCO	2022	GVI-55	FEDERAL	IN SERVICE
CHEVY	TAHOE	2020	PD-33	FEDERAL	IN SERVICE
CHEVY	TAHOE	2020	PD-47	FEDERAL	IN SERVICE
CHEVY	TAHOE	2020	PD-286	FEDERAL	IN SERVICE
FORD	F-150	2023	PD-121	FEDERAL	IN SERVICE
CHEVY	S-1500	2017	PD-31	LOCAL	IN SERVICE
FORD	INTERCEPTOR	2014	PD-125	LOCAL	IN SERVICE
CHEVY	TAHOE	2009	CFW-572	LOCAL	IN SERVICE
CHEVY	S2500	2009	PD-171	LOCAL	IN SERVICE
FORD	TRANSIT	2020	PD-75	FEDERAL	IN SERVICE
FORD	F-150	2022	PD-297	FEDERAL	IN SERVICE
FORD	F-150	2021	CHZ-290	FEDERAL	IN SERVICE
FORD	ESCAPE	2016	CHZ-276	FEDERAL	IN SERVICE
FORD	TRANSIT	2021	CHZ-288	FEDERAL	IN SERVICE
FREGHT L.	MOBILE C.	2018	PD-187	FEDERAL	IN SERVICE
SMARTCE	FORTWO	2018	PD-21	DONATED	IN SERVICE
SMARTCE	FORTWO	2018	PD-23	DONATED	IN SERVICE
FORD	INTERCEPTOR	2021	PD-287	FEDERAL	IN SERVICE
FORD	INTERCEPTOR	2014	PD-199	LOCAL	IN SERVICE
FORD	INTERCEPTOR	2021	PD-271	FEDERAL	IN SERVICE
FORD	INTERCEPTOR	2013	PD-89	LOCAL	WRECK
FORD	INTERCEPTOR	2014	PD-99	LOCAL	IN SERVICE
FORD	INTERCEPTOR	2013	PD-229	LOCAL	IN SERVICE
FORD	INTERCEPTOR	2014	PD-285	LOCAL	IN SERVICE
FORD	F-150	2022	PD-353	FEDERAL	IN SERVICE
FORD	F-150	2022	PD-357	FEDERAL	IN SERVICE
FORD	F-150	2022	PD-355	FEDERAL	IN SERVICE
FORD	INTERCEPTOR	2014	PD-211	LOCAL	IN SERVICE
FORD	INTERCEPTOR	2014	PD-245	LOCAL	IN SERVICE
FORD	INTERCEPTOR	2014	PD-137	LOCAL	IN SERVICE
CHEVY	E-VAN	2009	PD-179	LOCAL	IN SERVICE
FORD	INTERCEPTOR	2014	PD-153	LOCAL	IN SERVICE
FORD	INTERCEPTOR	2013	CGN-029	LOCAL	IN SERVICE
CHEVY	TAHOE	2016	CHR-696	FEDERAL	IN SERVICE
FORD	F-350	2024	PD-147	FEDERAL	IN SERVICE
FORD	F-250	2017	PD-217	LOCAL	IN SERVICE
FORD	RANGER	2022	CHZ-272	FEDERAL	IN SERVICE
CHEVY	EQUINOX	2009	PD-71	LOCAL	IN SERVICE
CHEVY	S3500	2009	PD-253	LOCAL	STORAGE

MAKE	MODEL	YEAR	PLATE #	FUNDING	CONDITION/ COMMENTS
CHEVY	S3500	2006	PD-25	LOCAL	IN SERVICE
FORD	F-550	2024	PD-235	FEDERAL	IN SERVICE
CHEVY	C-5500	2009	PD-95	LOCAL	IN SERVICE
FORD	TRANSIT	2017	PD-45	LOCAL	UNIT DOWN
FORD	TRANSIT-350	2024	GVI-61	FEDERAL	UNIT DOWN
FORD	INTERCEPTOR	2013	PD-103	LOCAL	UNIT DOWN
FORD	INTERCEPTOR	2014	PD-213	LOCAL	WRECK
TOYOTA	Highlander	2016	CHZ-287	LOCAL	UNIT DOWN
FORD	EDGE	2017	CFX-890	LOCAL	WRECK
FORD	INTERCEPTOR	2021	PD-273	FEDERAL	WRECK
HONDA	PASSPORT	2021	CHZ-277	LOCAL	STORAGE
FORD	INTERCEPTOR	2014	PD-139	LOCAL	UNIT DOWN
FORD	INTERCEPTOR	2013	CHZ-343	LOCAL	UNIT DOWN
FORD	INTERCEPTOR	2016	PD-83	LOCAL	WRECK
FORD	INTERCEPTOR	2013	PD-167	LOCAL	UNIT DOWN
FORD	INTERCEPTOR	2013	PD-251	LOCAL	UNIT DOWN
FORD	TAURUS	2016	CFQ-858	LOCAL	COLLISION
FORD	INTERCEPTOR	2014	PD-69	LOCAL	WRECK
TOYOTA	RAV-4	2014	CHZ-289	FEDERAL	WRECK
FORD	INTERCEPTOR	2021	PD-289	FED	UNIT DOWN
FORD	INTERCEPTOR	2013	CFV-265	LOCAL	UNIT DOWN
FORD	INTERCEPTOR	2014	PD-155	LOCAL	UNIT DOWN
CHEVY	OUTLANDER	2008	CFV-251	LOCAL	UNIT DOWN
FORD	INTERCEPTOR	2021	PD-277	FEDERAL	UNIT DOWN
FORD	INTERCEPTOR	2018	PD-15	LOCAL	WRECK
FORD	EXPLORER	2022	CHZ-339	FEDERAL	UNIT DOWN
Ford	Taurus Int	2018	PD-259	LOCAL	COLLISION
FORD	INTERCEPTOR	2018	PD-3	LOCAL	UNIT DOWN
FORED	F-550	2004	PD-97	LOCAL	STORAGE
CHEVY	CAMARO	2010	PD-257	FEDERAL	STORAGE
CHEVY	E-2500	2010	PD-165	LOCAL	UNIT DOWN
CHEVY	E-1500	2009	PD-191	LOCAL	STORAGE
CHEVY	E-3500	2010	PD-85	LOCAL	STORAGE
CHEVY	TRAILBLAZER	2007	PD-53	FEDERAL	STORAGE
FORD	INTERCEPTOR	2013	PD-5	LOCAL	UNIT DOWN
FORD	INTERCEPTOR	2013	CHZ-344	LOCAL	UNIT DOWN
CHEVY	EQUINOX	2017	CFX-886	LOCAL	STORAGE
CHEVY	S-2500	2009	PD-87	LOCAL	STORAGE
FORD	INTERCEPTOR	2014	PD-93	LOCAL	UNIT DOWN
FORD	INTERCEPTOR	2014	PD-195	LOCAL	UNIT DOWN
FORD	INTERCEPTOR	2014	PD-169	LOCAL	UNIT DOWN
FORD	INTERCEPTOR	2014	PD-233	LOCAL	UNIT DOWN
CHEVY	EQUINOX	2017	CHZ-340	LOCAL	UNIT DOWN
FORD	EXPLORER	2013	PD-197	LOCAL	UNIT DOWN
CHEVY	EQUINOX	2017	CHZ-334	LOCAL	UNIT DOWN
FORD	F-150	2022	PD-141	FEDERAL	COLLISION

## APPENDIX II

### PERSONNEL LISTING

JOB TITLE	STATUS	SALARY	FTE
<b>FUND 100</b>			
<b>UNCLASSIFIED</b>			
ADMINISTRATIVE SPECIALIST	FILLED	\$50,000.00	1.00
ADMINISTRATIVE SPECIALIST	FILLED	\$50,000.00	1.00
ASSISTANT COMMISSIONER	FILLED	\$125,000.00	1.00
ASSISTANT DIRECTOR COMMUNICATIONS	FILLED	\$75,000.00	1.00
ASSISTANT DIRECTOR FACILITIES MANAGEMENT	FILLED	\$68,000.00	1.00
ASSISTANT DIRECTOR INFORMATION SYSTEMS	FILLED	\$70,000.00	1.00
ATTORNEY	FILLED	\$120,000.00	1.00
CHIEF FINANCIAL OFFICER	FILLED	\$105,000.00	1.00
CHIEF OF POLICE	FILLED	\$120,000.00	1.00
CHIEF OF POLICE	FILLED	\$120,000.00	1.00
COMMUNITY SERVICE OFFICER/SPECIAL PATROLMAN	FILLED	\$42,561.10	1.00
CONSENT DECREE MANAGER/CONFIDENTIAL ADVISOR	FILLED	\$95,000.00	1.00
CRIMINALIST	FILLED	\$65,000.00	1.00
CRIMINALIST	FILLED	\$65,000.00	1.00
DEPUTY CHIEF	FILLED	\$115,000.00	1.00
DEPUTY CHIEF	FILLED	\$115,000.00	1.00
DEPUTY CHIEF	FILLED	\$115,000.00	1.00
DEPUTY COMMISSIONER	FILLED	\$120,000.00	1.00
DEPUTY COMMISSIONER	FILLED	\$120,000.00	1.00
DIGNITARY SECURITY OFFICER	FILLED	\$84,500.00	1.00
DIGNITARY SECURITY OFFICER	FILLED	\$84,500.00	1.00
DIGNITARY SECURITY OFFICER	FILLED	\$84,500.00	1.00
DIGNITARY SECURITY OFFICER	FILLED	\$84,500.00	1.00
DIGNITARY SECURITY OFFICER	FILLED	\$84,500.00	1.00
DIGNITARY SECURITY OFFICER	FILLED	\$84,500.00	1.00
DIGNITARY SECURITY OFFICER	FILLED	\$84,500.00	1.00
DIRECTOR EXECUTIVE SECURITY	FILLED	\$110,000.00	1.00
DIRECTOR FEDERAL GRANTS	FILLED	\$90,000.00	1.00
DIRECTOR OF COMMUNICATIONS	FILLED	\$90,000.00	1.00
DIRECTOR OF HIGHWAY SAFETY	FILLED	\$87,550.00	1.00
DIRECTOR OF HUMAN RESOURCES	FILLED	\$95,000.00	1.00
DIRECTOR OF INFORMATION SYSTEMS	FILLED	\$85,000.00	1.00
DISTRICT SUPERVISOR DIGNITARY SECURITY OFFICER	FILLED	\$90,000.00	1.00
DISTRICT SUPERVISOR DIGNITARY SECURITY OFFICER	FILLED	\$90,000.00	1.00
EXECUTIVE ASSISTANT	FILLED	\$75,000.00	1.00
EXECUTIVE ASSISTANT	FILLED	\$75,000.00	1.00
EXECUTIVE UNIFORM SECURITY OFFICER	FILLED	\$48,000.00	1.00
EXECUTIVE UNIFORM SECURITY OFFICER	FILLED	\$48,000.00	1.00
EXECUTIVE UNIFORM SECURITY OFFICER	FILLED	\$48,000.00	1.00



JOB TITLE	STATUS	SALARY	FTE
EXECUTIVE UNIFORM SECURITY OFFICER	FILLED	\$48,000.00	1.00
EXECUTIVE UNIFORM SECURITY OFFICER	FILLED	\$48,000.00	1.00
EXECUTIVE UNIFORM SECURITY OFFICER	FILLED	\$48,000.00	1.00
EXECUTIVE UNIFORM SECURITY OFFICER	FILLED	\$48,000.00	1.00
EXECUTIVE UNIFORM SECURITY OFFICER	FILLED	\$48,000.00	1.00
EXECUTIVE UNIFORM SECURITY OFFICER	FILLED	\$48,000.00	1.00
EXECUTIVE UNIFORM SECURITY OFFICER	FILLED	\$48,000.00	1.00
EXECUTIVE UNIFORM SECURITY OFFICER	FILLED	\$48,000.00	1.00
EXECUTIVE UNIFORM SECURITY OFFICER	FILLED	\$48,000.00	1.00
EXECUTIVE UNIFORM SECURITY OFFICER	FILLED	\$48,000.00	1.00
FACILITIES MAINTENANCE MANAGER	FILLED	\$60,000.00	1.00
FACILITIES MAINTENANCE TECHNICIAN	FILLED	\$50,000.00	1.00
FACILITY MAINTENANCE SUPERVISOR	FILLED	\$60,000.00	1.00
FEDERAL GRANTS COORDINATOR	FILLED	\$69,010.00	1.00
FISCAL AND BUDGET MANAGER	FILLED	\$65,000.00	1.00
HUMAN RESOURCES ADMINISTRATOR	FILLED	\$85,000.00	1.00
INTERNAL AFFAIRS UNIT (IAU) DIRECTOR	FILLED	\$105,818.00	1.00
LEAD DIGNITARY SECURITY OFFICER	FILLED	\$87,000.00	1.00
LEAD DIGNITARY SECURITY OFFICER	FILLED	\$87,000.00	1.00
LEAD DIGNITARY SECURITY OFFICER	FILLED	\$87,000.00	1.00
LEGAL OFFICE ADMINISTRATOR	FILLED	\$60,000.00	1.00
MEDIA INFORMATION SPECIALIST	FILLED	\$50,000.00	1.00
MEDIA RELATIONS COORDINATOR	FILLED	\$61,800.00	1.00
POLICE COMMISSIONER	FILLED	\$135,000.00	1.00
POLICE FLEET MANAGER	FILLED	\$61,800.00	1.00
UNIFORM SECURITY SUPERVISOR	FILLED	\$74,000.00	1.00
UNIFORM SECURITY SUPERVISOR	FILLED	\$74,000.00	1.00
VICTIMS WITNESS ADVOCATE	FILLED	\$65,000.00	1.00
VICTIMS WITNESS ADVOCATE	FILLED	\$65,000.00	1.00
WEED & SEED COORDINATOR	FILLED	\$50,000.00	1.00
<b>UNCLASSIFIED FILLED</b>		<b>\$5,311,039.00</b>	<b>69.00</b>
<b>UNCLASSIFIED</b>			
<b>CHIEF PROCUREMENT OFFICER</b>	<b>VACANT</b>	<b>\$80,000.00</b>	<b>1.00</b>
<b>DIRECTOR COMMUNITY AFFAIRS</b>	<b>VACANT</b>	<b>\$85,000.00</b>	<b>1.00</b>
<b>DIRECTOR OF STRATEGIC PLANNING &amp; RESEARCH</b>	<b>VACANT</b>	<b>\$85,000.00</b>	<b>1.00</b>
<b>EXECUTIVE UNIFORM SECURITY OFFICER</b>	<b>VACANT</b>	<b>\$48,000.00</b>	<b>1.00</b>
<b>FACILITIES MAINTENANCE TECHNICIAN</b>	<b>VACANT</b>	<b>\$50,000.00</b>	<b>1.00</b>
<b>LEAD EXECUTIVE SECURITY OFFICER</b>	<b>VACANT</b>	<b>\$59,000.00</b>	<b>1.00</b>
<b>LEAD EXECUTIVE SECURITY OFFICER</b>	<b>VACANT</b>	<b>\$59,000.00</b>	<b>1.00</b>
<b>MEDIA INFORMATION SPECIALIST</b>	<b>VACANT</b>	<b>\$50,000.00</b>	<b>1.00</b>
<b>SPECIAL PROJECTS COORDINATOR</b>	<b>VACANT</b>	<b>\$85,000.00</b>	<b>1.00</b>
<b>TERRITORIAL PAYROLL DIRECTOR</b>	<b>VACANT</b>	<b>\$90,000.00</b>	<b>1.00</b>
<b>TRAVEL COORDINATOR</b>	<b>VACANT</b>	<b>\$25,000.00</b>	<b>0.50</b>
<b>UNCLASSIFIED VACANT</b>		<b>\$716,000.00</b>	<b>10.50</b>
<b>CLASSIFIED</b>			
ACCOUNTS PAYABLE SPECIALIST	FILLED	\$66,657.94	1.00
ACCOUNTS PAYABLE SPECIALIST	FILLED	\$46,752.54	1.00
ADMINISTRATIVE OFFICER I	FILLED	\$45,000.00	1.00

<b>JOB TITLE</b>	<b>STATUS</b>	<b>SALARY</b>	<b>FTE</b>
ADMINISTRATIVE OFFICER I	FILLED	\$47,460.30	1.00
ADMINISTRATIVE OFFICER III	FILLED	\$48,155.12	1.00
AUTO BODY REPAIR	FILLED	\$43,538.32	1.00
AUXILIARY OFFICER	FILLED	\$30,715.11	1.00
AUXILIARY OFFICER	FILLED	\$30,715.11	1.00
CERTIFIED AUTOMOTIVE TECHNICIAN	FILLED	\$49,840.55	1.00
CERTIFIED AUTOMOTIVE TECHNICIAN	FILLED	\$48,388.88	1.00
CERTIFIED AUTOMOTIVE TECHNICIAN	FILLED	\$45,833.65	1.00
CERTIFIED AUTOMOTIVE TECHNICIAN	FILLED	\$44,715.76	1.00
CHIEF OF RECORDS MANAGEMENT	FILLED	\$52,671.00	1.00
CHIEF OF RECORDS MANAGEMENT	FILLED	\$52,671.00	1.00
COMMUNITY SERVICE OFFICER	FILLED	\$42,561.10	1.00
COMMUNITY SERVICE OFFICER	FILLED	\$42,561.10	1.00
COMMUNITY SERVICE OFFICER	FILLED	\$45,833.65	1.00
COMMUNITY SERVICE OFFICER	FILLED	\$45,833.65	1.00
COMMUNITY SERVICE OFFICER	FILLED	\$44,715.76	1.00
COMMUNITY SERVICE OFFICER	FILLED	\$44,715.76	1.00
COMMUNITY SERVICE OFFICER	FILLED	\$45,833.65	1.00
COMMUNITY SERVICE OFFICER	FILLED	\$45,833.65	1.00
COMMUNITY SERVICE OFFICER	FILLED	\$44,715.76	1.00
COMMUNITY SERVICE OFFICER	FILLED	\$45,833.65	1.00
COMMUNITY SERVICE OFFICER	FILLED	\$44,715.76	1.00
COMMUNITY SERVICE OFFICER	FILLED	\$44,715.76	1.00
COMMUNITY SERVICE OFFICER	FILLED	\$44,715.76	1.00
COMMUNITY SERVICE OFFICER	FILLED	\$44,715.76	1.00
COMMUNITY SERVICE OFFICER	FILLED	\$44,715.76	1.00
COMMUNITY SERVICE OFFICER	FILLED	\$44,715.76	1.00
COMMUNITY SERVICE OFFICER	FILLED	\$43,625.13	1.00
COMMUNITY SERVICE OFFICER	FILLED	\$43,625.13	1.00
COMMUNITY SERVICE OFFICER	FILLED	\$42,561.10	1.00
CRIME SCENE SHIFT SUPERVISOR	FILLED	\$61,618.00	1.00
CRIME SCENE TECHNICIAN	FILLED	\$46,280.81	1.00
CRIME SCENE TECHNICIAN	FILLED	\$65,346.29	1.00
CRIME SCENE TECHNICIAN	FILLED	\$65,346.29	1.00
CRIME SCENE TECHNICIAN	FILLED	\$50,082.49	1.00
CRIME SCENE TECHNICIAN	FILLED	\$46,280.81	1.00
CRIME SCENE TECHNICIAN	FILLED	\$46,280.81	1.00
CRIME SCENE TECHNICIAN	FILLED	\$46,280.81	1.00
CRIME SCENE TECHNICIAN	FILLED	\$46,280.81	1.00
CRIME SCENE TECHNICIAN	FILLED	\$46,280.81	1.00
CRIME SCENE TECHNICIAN	FILLED	\$51,584.96	1.00
CRIME SCENE TECHNICIAN	FILLED	\$46,280.81	1.00
CUSTODIAL WORKER	FILLED	\$28,547.48	1.00
DATA ENTRY OPERATOR I	FILLED	\$56,673.44	1.00
DATA ENTRY OPERATOR II	FILLED	\$40,741.66	1.00
FIREARM CERT CLERK	FILLED	\$43,644.00	1.00
FIREARM CERT CLERK	FILLED	\$40,331.05	1.00
HUMAN RESOURCES ASSISTANT	FILLED	\$46,412.53	1.00
HUMAN RESOURCES COORDINATOR	FILLED	\$61,312.93	1.00
HUMAN RESOURCES GENERALIST	FILLED	\$55,878.72	1.00
INTERNAL AFFAIRS AGENT I	FILLED	\$60,626.37	1.00
INTERNAL AFFAIRS AGENT I	FILLED	\$55,429.83	1.00
INTERNAL AFFAIRS AGENT II	FILLED	\$69,470.08	1.00

JOB TITLE	STATUS	SALARY	FTE
INTERNAL AFFAIRS AGENT II	FILLED	\$70,162.96	1.00
LABOR RELATIONS SPECIALIST	FILLED	\$55,612.63	1.00
MOTORPOOL MANAGER	FILLED	\$56,969.00	1.00
NCIC DATA ENTRY OPERATOR	FILLED	\$39,347.37	1.00
NCIC DATA ENTRY OPERATOR	FILLED	\$44,953.32	1.00
NCIC DATA ENTRY OPERATOR	FILLED	\$44,953.32	1.00
NCIC DATA ENTRY OPERATOR	FILLED	\$41,339.33	1.00
NCIC DATA ENTRY OPERATOR	FILLED	\$43,203.63	1.00
NCIC DATA ENTRY OPERATOR	FILLED	\$39,347.37	1.00
NCIC DATA ENTRY OPERATOR	FILLED	\$46,301.92	1.00
NCIC DATA ENTRY OPERATOR	FILLED	\$46,301.92	1.00
NCIC DATA ENTRY OPERATOR	FILLED	\$39,347.37	1.00
NCIC DATA ENTRY OPERATOR	FILLED	\$39,347.37	1.00
NCIC DATA ENTRY OPERATOR	FILLED	\$45,390.82	1.00
NCIC DATA ENTRY OPERATOR	FILLED	\$39,347.37	1.00
OFFICE MANAGER	FILLED	\$69,472.00	1.00
PAYROLL AUDIT CLERK I	FILLED	\$35,487.82	1.00
PAYROLL AUDIT CLERK I	FILLED	\$35,487.82	1.00
PAYROLL AUDIT CLERK I	FILLED	\$35,487.82	1.00
PAYROLL AUDIT CLERK III	FILLED	\$49,002.76	1.00
PAYROLL SUPERVISOR	FILLED	\$50,645.00	1.00
POLICE ADMINISTRATIVE AIDE	FILLED	\$43,203.63	1.00
POLICE ADMINISTRATIVE AIDE	FILLED	\$44,283.72	1.00
POLICE ADMINISTRATIVE AIDE	FILLED	\$48,155.12	1.00
POLICE ADMINISTRATIVE AIDE	FILLED	\$48,155.12	1.00
POLICE ADMINISTRATIVE AIDE	FILLED	\$43,203.63	1.00
POLICE ADMINISTRATIVE AIDE	FILLED	\$43,203.63	1.00
POLICE ADMINISTRATIVE AIDE	FILLED	\$43,203.63	1.00
POLICE ADMINISTRATIVE AIDE	FILLED	\$43,203.63	1.00
POLICE ADMINISTRATIVE AIDE	FILLED	\$43,203.63	1.00
POLICE ADMINISTRATIVE AIDE	FILLED	\$43,203.63	1.00
POLICE ADMINISTRATIVE ASSISTANT	FILLED	\$53,132.51	1.00
POLICE ADMINISTRATIVE ASSISTANT	FILLED	\$78,026.89	1.00
POLICE AUXILIARY	FILLED	\$30,715.10	1.00
POLICE AUXILIARY	FILLED	\$30,715.10	1.00
POLICE AUXILIARY	FILLED	\$30,715.10	1.00
POLICE AUXILIARY	FILLED	\$30,715.10	1.00
POLICE AUXILIARY	FILLED	\$30,715.10	1.00
POLICE AUXILIARY	FILLED	\$30,715.11	1.00
POLICE AUXILIARY	FILLED	\$30,715.11	1.00
POLICE AUXILIARY	FILLED	\$30,715.10	1.00
POLICE AUXILIARY	FILLED	\$30,715.10	1.00
POLICE AUXILIARY	FILLED	\$30,715.10	1.00
POLICE AUXILIARY	FILLED	\$30,715.10	1.00
POLICE AUXILIARY	FILLED	\$30,715.15	1.00
POLICE AUXILIARY	FILLED	\$30,715.10	1.00
POLICE AUXILIARY	FILLED	\$30,715.10	1.00
POLICE AUXILIARY	FILLED	\$30,715.10	1.00
POLICE AUXILIARY	FILLED	\$30,715.10	1.00
POLICE AUXILIARY	FILLED	\$30,715.10	1.00

JOB TITLE	STATUS	SALARY	FTE
POLICE AUXILIARY	FILLED	\$30,715.10	1.00
POLICE AUXILIARY	FILLED	\$30,715.10	1.00
POLICE AUXILIARY	FILLED	\$30,715.10	1.00
POLICE AUXILIARY	FILLED	\$30,715.11	1.00
POLICE AUXILIARY	FILLED	\$30,715.10	1.00
POLICE AUXILIARY	FILLED	\$30,715.10	1.00
POLICE AUXILIARY	FILLED	\$30,715.10	1.00
POLICE AUXILIARY	FILLED	\$30,715.10	1.00
POLICE CAPTAIN	FILLED	\$98,326.94	1.00
POLICE CAPTAIN	FILLED	\$87,242.70	1.00
POLICE CAPTAIN	FILLED	\$107,848.61	1.00
POLICE CAPTAIN	FILLED	\$95,394.94	1.00
POLICE CAPTAIN	FILLED	\$71,599.23	1.00
POLICE CAPTAIN	FILLED	\$95,394.94	1.00
POLICE CAPTAIN	FILLED	\$92,596.22	1.00
POLICE CAPTAIN	FILLED	\$95,394.94	1.00
POLICE COMPLIANCE AUDITOR	FILLED	\$53,217.83	1.00
POLICE COMPLIANCE AUDITOR	FILLED	\$53,217.83	1.00
POLICE COMPLIANCE AUDITOR	FILLED	\$50,683.65	1.00
POLICE CORPORAL	FILLED	\$76,296.00	1.00
POLICE CRIME ANALYST	FILLED	\$58,059.33	1.00
POLICE CRIME ANALYST	FILLED	\$46,280.81	1.00
POLICE CRIME ANALYST	FILLED	\$46,280.81	1.00
POLICE CRIME ANALYST	FILLED	\$46,280.81	1.00
POLICE DETECTIVE	FILLED	\$69,007.00	1.00
POLICE EVIDENCE CUSTODIAN	FILLED	\$43,203.63	1.00
POLICE LIEUTENANT	FILLED	\$100,216.11	1.00
POLICE LIEUTENANT	FILLED	\$91,424.05	1.00
POLICE LIEUTENANT	FILLED	\$86,845.43	1.00
POLICE LIEUTENANT	FILLED	\$90,353.98	1.00
POLICE LIEUTENANT	FILLED	\$87,618.11	1.00
POLICE LIEUTENANT	FILLED	\$90,353.98	1.00
POLICE LIEUTENANT	FILLED	\$90,353.98	1.00
POLICE LIEUTENANT	FILLED	\$79,123.98	1.00
POLICE LIEUTENANT	FILLED	\$74,453.32	1.00
POLICE LIEUTENANT	FILLED	\$90,353.98	1.00
POLICE LIEUTENANT	FILLED	\$108,649.98	1.00
POLICE LIEUTENANT	FILLED	\$90,198.16	1.00
POLICE LIEUTENANT	FILLED	\$75,211.51	1.00
POLICE LIEUTENANT	FILLED	\$90,353.98	1.00
POLICE LIEUTENANT	FILLED	\$81,024.16	1.00
POLICE LIEUTENANT	FILLED	\$86,845.43	1.00
POLICE LIEUTENANT	FILLED	\$86,845.43	1.00
POLICE LIEUTENANT	FILLED	\$90,353.03	1.00
POLICE LIEUTENANT	FILLED	\$77,537.40	1.00
POLICE OFFICER	FILLED	\$59,023.41	1.00
POLICE OFFICER	FILLED	\$70,732.00	1.00
POLICE OFFICER	FILLED	\$70,732.00	1.00
POLICE OFFICER	FILLED	\$50,334.00	1.00
POLICE OFFICER	FILLED	\$54,398.00	1.00
POLICE OFFICER	FILLED	\$64,507.80	1.00

JOB TITLE	STATUS	SALARY	FTE
POLICE OFFICER	FILLED	\$44,639.18	1.00
POLICE OFFICER	FILLED	\$42,182.00	1.00
POLICE OFFICER	FILLED	\$54,467.90	1.00
POLICE OFFICER	FILLED	\$42,182.00	1.00
POLICE OFFICER	FILLED	\$61,291.00	1.00
POLICE OFFICER	FILLED	\$56,334.00	1.00
POLICE OFFICER	FILLED	\$65,040.00	1.00
POLICE OFFICER	FILLED	\$48,398.00	1.00
POLICE OFFICER	FILLED	\$50,334.00	1.00
POLICE OFFICER	FILLED	\$59,023.41	1.00
POLICE OFFICER	FILLED	\$69,007.00	1.00
POLICE OFFICER	FILLED	\$54,467.90	1.00
POLICE OFFICER	FILLED	\$76,296.00	1.00
POLICE OFFICER	FILLED	\$44,750.00	1.00
POLICE OFFICER	FILLED	\$43,447.00	1.00
POLICE OFFICER	FILLED	\$47,791.70	1.00
POLICE OFFICER	FILLED	\$44,750.00	1.00
POLICE OFFICER	FILLED	\$46,053.82	1.00
POLICE OFFICER	FILLED	\$50,372.61	1.00
POLICE OFFICER	FILLED	\$50,618.40	1.00
POLICE OFFICER	FILLED	\$43,447.00	1.00
POLICE OFFICER	FILLED	\$69,489.00	1.00
POLICE OFFICER	FILLED	\$44,750.00	1.00
POLICE OFFICER	FILLED	\$40,953.00	1.00
POLICE OFFICER	FILLED	\$40,953.00	1.00
POLICE OFFICER	FILLED	\$48,447.00	1.00
POLICE OFFICER	FILLED	\$43,447.00	1.00
POLICE OFFICER	FILLED	\$75,073.00	1.00
POLICE OFFICER	FILLED	\$44,750.00	1.00
POLICE OFFICER	FILLED	\$42,182.00	1.00
POLICE OFFICER	FILLED	\$40,953.00	1.00
POLICE OFFICER	FILLED	\$44,750.00	1.00
POLICE OFFICER	FILLED	\$48,845.30	1.00
POLICE OFFICER	FILLED	\$54,441.00	1.00
POLICE OFFICER	FILLED	\$82,125.00	1.00
POLICE OFFICER	FILLED	\$60,090.00	1.00
POLICE OFFICER	FILLED	\$76,296.00	1.00
POLICE OFFICER	FILLED	\$49,143.60	1.00
POLICE OFFICER	FILLED	\$75,073.00	1.00
POLICE OFFICER	FILLED	\$69,729.00	1.00
POLICE OFFICER	FILLED	\$40,953.00	1.00
POLICE OFFICER	FILLED	\$50,334.00	1.00
POLICE OFFICER	FILLED	\$64,080.00	1.00
POLICE OFFICER	FILLED	\$52,347.00	1.00
POLICE OFFICER	FILLED	\$75,073.00	1.00
POLICE OFFICER	FILLED	\$76,296.00	1.00
POLICE OFFICER	FILLED	\$64,080.00	1.00
POLICE OFFICER	FILLED	\$44,750.00	1.00
POLICE OFFICER	FILLED	\$60,090.00	1.00
POLICE OFFICER	FILLED	\$52,940.61	1.00
POLICE OFFICER	FILLED	\$72,870.00	1.00

JOB TITLE	STATUS	SALARY	FTE
POLICE OFFICER	FILLED	\$48,398.00	1.00
POLICE OFFICER	FILLED	\$44,750.00	1.00
POLICE OFFICER	FILLED	\$70,732.00	1.00
POLICE OFFICER	FILLED	\$70,732.00	1.00
POLICE OFFICER	FILLED	\$70,732.00	1.00
POLICE OFFICER	FILLED	\$65,040.00	1.00
POLICE OFFICER	FILLED	\$56,041.00	1.00
POLICE OFFICER	FILLED	\$76,517.65	1.00
POLICE OFFICER	FILLED	\$43,447.00	1.00
POLICE OFFICER	FILLED	\$48,845.31	1.00
POLICE OFFICER	FILLED	\$80,891.00	1.00
POLICE OFFICER	FILLED	\$66,090.00	1.00
POLICE OFFICER	FILLED	\$56,074.00	1.00
POLICE OFFICER	FILLED	\$40,953.00	1.00
POLICE OFFICER	FILLED	\$64,590.00	1.00
POLICE OFFICER	FILLED	\$65,682.00	1.00
POLICE OFFICER	FILLED	\$78,117.00	1.00
POLICE OFFICER	FILLED	\$61,099.05	1.00
POLICE OFFICER	FILLED	\$60,090.00	1.00
POLICE OFFICER	FILLED	\$57,756.00	1.00
POLICE OFFICER	FILLED	\$44,750.00	1.00
POLICE OFFICER	FILLED	\$40,953.00	1.00
POLICE OFFICER	FILLED	\$40,953.00	1.00
POLICE OFFICER	FILLED	\$40,953.00	1.00
POLICE OFFICER	FILLED	\$48,398.00	1.00
POLICE OFFICER	FILLED	\$58,911.00	1.00
POLICE OFFICER	FILLED	\$58,911.00	1.00
POLICE OFFICER	FILLED	\$57,756.00	1.00
POLICE OFFICER	FILLED	\$57,756.00	1.00
POLICE OFFICER	FILLED	\$57,756.00	1.00
POLICE OFFICER	FILLED	\$57,756.00	1.00
POLICE OFFICER	FILLED	\$46,093.00	1.00
POLICE OFFICER	FILLED	\$63,756.00	1.00
POLICE OFFICER	FILLED	\$54,441.00	1.00
POLICE OFFICER	FILLED	\$75,082.80	1.00
POLICE OFFICER	FILLED	\$57,756.00	1.00
POLICE OFFICER	FILLED	\$57,756.00	1.00
POLICE OFFICER	FILLED	\$44,750.00	1.00
POLICE OFFICER	FILLED	\$57,756.00	1.00
POLICE OFFICER	FILLED	\$76,296.00	1.00
POLICE OFFICER	FILLED	\$57,756.00	1.00
POLICE OFFICER	FILLED	\$49,143.60	1.00
POLICE OFFICER	FILLED	\$40,953.00	1.00
POLICE OFFICER	FILLED	\$40,953.00	1.00
POLICE OFFICER	FILLED	\$40,953.00	1.00
POLICE OFFICER	FILLED	\$40,953.00	1.00
POLICE OFFICER	FILLED	\$40,953.00	1.00
POLICE OFFICER	FILLED	\$40,953.00	1.00
POLICE OFFICER	FILLED	\$70,693.20	1.00
POLICE OFFICER	FILLED	\$56,074.00	1.00
POLICE OFFICER	FILLED	\$76,296.00	1.00
POLICE OFFICER	FILLED	\$76,584.30	1.00



JOB TITLE	STATUS	SALARY	FTE
POLICE OFFICER	FILLED	\$46,093.00	1.00
POLICE OFFICER	FILLED	\$56,074.00	1.00
POLICE OFFICER	FILLED	\$52,136.40	1.00
POLICE OFFICER	FILLED	\$42,182.00	1.00
POLICE OFFICER	FILLED	\$56,074.00	1.00
POLICE OFFICER	FILLED	\$71,793.00	1.00
POLICE OFFICER	FILLED	\$56,334.00	1.00
POLICE OFFICER	FILLED	\$48,509.30	1.00
POLICE OFFICER	FILLED	\$52,347.00	1.00
POLICE OFFICER	FILLED	\$42,182.00	1.00
POLICE OFFICER	FILLED	\$42,182.00	1.00
POLICE OFFICER	FILLED	\$76,296.00	1.00
POLICE OFFICER	FILLED	\$44,750.00	1.00
POLICE OFFICER	FILLED	\$50,334.00	1.00
POLICE OFFICER	FILLED	\$44,750.00	1.00
POLICE OFFICER	FILLED	\$40,953.00	1.00
POLICE OFFICER	FILLED	\$43,447.00	1.00
POLICE OFFICER	FILLED	\$56,074.00	1.00
POLICE OFFICER	FILLED	\$40,953.00	1.00
POLICE OFFICER	FILLED	\$52,347.00	1.00
POLICE OFFICER	FILLED	\$49,143.60	1.00
POLICE OFFICER	FILLED	\$40,953.00	1.00
POLICE OFFICER	FILLED	\$54,810.45	1.00
POLICE OFFICER	FILLED	\$83,509.00	1.00
POLICE OFFICER	FILLED	\$44,750.00	1.00
POLICE OFFICER	FILLED	\$52,347.00	1.00
POLICE OFFICER	FILLED	\$62,517.00	1.00
POLICE OFFICER	FILLED	\$48,398.00	1.00
POLICE OFFICER	FILLED	\$42,182.00	1.00
POLICE OFFICER	FILLED	\$94,731.00	1.00
POLICE OFFICER	FILLED	\$61,505.75	1.00
POLICE OFFICER	FILLED	\$50,334.00	1.00
POLICE OFFICER	FILLED	\$50,334.00	1.00
POLICE OFFICER	FILLED	\$48,398.00	1.00
POLICE OFFICER	FILLED	\$52,347.00	1.00
POLICE OFFICER	FILLED	\$69,007.00	1.00
POLICE OFFICER	FILLED	\$75,149.96	1.00
POLICE OFFICER	FILLED	\$49,143.60	1.00
POLICE OFFICER	FILLED	\$76,296.00	1.00
POLICE OFFICER	FILLED	\$73,469.00	1.00
POLICE OFFICER	FILLED	\$73,963.00	1.00
POLICE OFFICER	FILLED	\$57,404.60	1.00
POLICE OFFICER	FILLED	\$73,963.00	1.00
POLICE OFFICER	FILLED	\$52,940.00	1.00
POLICE OFFICER	FILLED	\$60,090.00	1.00
POLICE OFFICER	FILLED	\$79,647.70	1.00
POLICE OFFICER	FILLED	\$69,007.00	1.00
POLICE OFFICER	FILLED	\$73,963.00	1.00
POLICE OFFICER	FILLED	\$58,347.00	1.00
POLICE OFFICER	FILLED	\$52,347.00	1.00
POLICE OFFICER	FILLED	\$40,953.00	1.00
POLICE OFFICER	FILLED	\$40,953.00	1.00

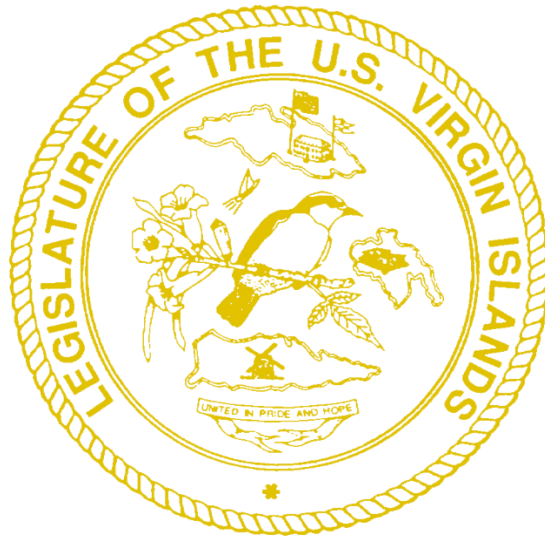
JOB TITLE	STATUS	SALARY	FTE
POLICE OFFICER	FILLED	\$65,682.00	1.00
POLICE OFFICER	FILLED	\$67,324.00	1.00
POLICE OFFICER	FILLED	\$49,143.60	1.00
POLICE OFFICER	FILLED	\$65,682.00	1.00
POLICE OFFICER	FILLED	\$40,953.00	1.00
POLICE OFFICER	FILLED	\$40,953.00	1.00
POLICE OFFICER	FILLED	\$57,347.00	1.00
POLICE OFFICER	FILLED	\$40,953.00	1.00
POLICE OFFICER	FILLED	\$40,953.00	1.00
POLICE OFFICER	FILLED	\$52,347.00	1.00
POLICE OFFICER	FILLED	\$40,953.00	1.00
POLICE OFFICER	FILLED	\$61,297.00	1.00
POLICE OFFICER	FILLED	\$40,953.00	1.00
POLICE OFFICER	FILLED	\$60,090.00	1.00
POLICE OFFICER	FILLED	\$50,334.00	1.00
POLICE OFFICER	FILLED	\$70,732.00	1.00
POLICE OFFICER	FILLED	\$56,074.00	1.00
POLICE OFFICER	FILLED	\$48,398.00	1.00
POLICE OFFICER	FILLED	\$70,125.80	1.00
POLICE OFFICER	FILLED	\$63,756.00	1.00
POLICE OFFICER	FILLED	\$44,750.00	1.00
POLICE OFFICER	FILLED	\$48,398.00	1.00
POLICE OFFICER	FILLED	\$63,756.00	1.00
POLICE OFFICER	FILLED	\$70,488.00	1.00
POLICE OFFICER	FILLED	\$48,398.00	1.00
POLICE OFFICER	FILLED	\$82,143.40	1.00
POLICE OFFICER	FILLED	\$82,737.00	1.00
POLICE OFFICER	FILLED	\$57,756.00	1.00
POLICE SERGEANT	FILLED	\$92,374.55	1.00
POLICE SERGEANT	FILLED	\$89,828.06	1.00
POLICE SERGEANT	FILLED	\$105,743.01	1.00
POLICE SERGEANT	FILLED	\$76,335.65	1.00
POLICE SERGEANT	FILLED	\$67,228.50	1.00
POLICE SERGEANT	FILLED	\$67,228.50	1.00
POLICE SERGEANT	FILLED	\$71,343.43	1.00
POLICE SERGEANT	FILLED	\$67,228.50	1.00
POLICE SERGEANT	FILLED	\$82,393.17	1.00
POLICE SERGEANT	FILLED	\$67,228.50	1.00
POLICE SERGEANT	FILLED	\$72,770.29	1.00
POLICE SERGEANT	FILLED	\$77,629.55	1.00
POLICE SERGEANT	FILLED	\$80,343.29	1.00
POLICE SERGEANT	FILLED	\$82,393.17	1.00
POLICE SERGEANT	FILLED	\$83,116.17	1.00
POLICE SERGEANT	FILLED	\$56,286.47	1.00
POLICE SERGEANT	FILLED	\$79,975.90	1.00
POLICE SERGEANT	FILLED	\$75,725.06	1.00
POLICE SERGEANT	FILLED	\$85,547.29	1.00
POLICE SERGEANT	FILLED	\$68,717.75	1.00
POLICE SERGEANT	FILLED	\$81,175.54	1.00
POLICE SERGEANT	FILLED	\$77,629.55	1.00
POLICE SERGEANT	FILLED	\$53,040.00	1.00
POLICE SERGEANT	FILLED	\$61,476.40	1.00

JOB TITLE	STATUS	SALARY	FTE
POLICE SERGEANT	FILLED	\$57,975.07	1.00
POLICE SERGEANT	FILLED	\$69,944.54	1.00
POLICE SERGEANT	FILLED	\$79,975.90	1.00
POLICE SERGEANT	FILLED	\$57,975.07	1.00
POLICE SERGEANT	FILLED	\$69,944.54	1.00
POLICE SERGEANT	FILLED	\$77,629.55	1.00
POLICE SERGEANT	FILLED	\$66,505.75	1.00
POLICE SERGEANT	FILLED	\$54,100.00	1.00
POLICE SERGEANT	FILLED	\$78,793.99	1.00
POLICE SERGEANT	FILLED	\$74,975.31	1.00
POLICE SERGEANT	FILLED	\$61,182.82	1.00
POLICE SERGEANT	FILLED	\$87,459.34	1.00
POLICE SERGEANT	FILLED	\$88,229.90	1.00
POLICE SERGEANT	FILLED	\$67,228.50	1.00
POLICE SERGEANT	FILLED	\$82,393.17	1.00
POLICE SERGEANT	FILLED	\$72,770.29	1.00
POLICE SERGEANT	FILLED	\$72,770.29	1.00
POLICE SERGEANT	FILLED	\$74,975.31	1.00
POLICE SERGEANT	FILLED	\$74,800.50	1.00
POLICE SERGEANT	FILLED	\$67,228.50	1.00
POLICE SERGEANT	FILLED	\$81,876.00	1.00
RECORDS CLERK III	FILLED	\$61,327.35	1.00
RECORDS SPECIALIST	FILLED	\$44,283.72	1.00
RECORDS SPECIALIST	FILLED	\$44,283.72	1.00
RECORDS SPECIALIST	FILLED	\$51,087.76	1.00
RECORDS SPECIALIST	FILLED	\$52,620.40	1.00
RECORDS SPECIALIST	FILLED	\$48,155.12	1.00
RECORDS SPECIALIST	FILLED	\$51,087.76	1.00
RECORDS SPECIALIST	FILLED	\$49,599.77	1.00
RECORDS SPECIALIST	FILLED	\$43,203.63	1.00
SCHOOL CROSSING GUARD	FILLED	\$29,849.32	1.00
SCHOOL CROSSING GUARD	FILLED	\$30,595.55	1.00
SCHOOL CROSSING GUARD	FILLED	\$30,595.55	1.00
SCHOOL CROSSING GUARD	FILLED	\$30,595.55	1.00
SCHOOL CROSSING GUARD	FILLED	\$30,595.55	1.00
SCHOOL CROSSING GUARD	FILLED	\$30,595.55	1.00
SCHOOL CROSSING GUARD	FILLED	\$30,595.55	1.00
SUPERVISOR SCHOOL CROSSING GUARD	FILLED	\$48,735.00	1.00
SYSTEM ANALYST I	FILLED	\$53,217.83	1.00
<b>CLASSIFIED FILLED</b>		<b>\$22,563,654.77</b>	<b>401.00</b>
<b>CLASSIFIED</b>			
ACCOUNTS PAYABLE SPECIALIST	VACANT	\$41,121.84	1.00
COMMUNITY SERVICE OFFICER	VACANT	\$42,561.10	1.00
COMMUNITY SERVICE OFFICER	VACANT	\$42,561.10	1.00
COMMUNITY SERVICE OFFICER	VACANT	\$42,561.10	1.00
CRIME SCENE TECHNICIAN	VACANT	\$44,050.74	1.00
CRIME SCENE TECHNICIAN	VACANT	\$44,050.74	1.00
CRIME SCENE TECHNICIAN	VACANT	\$44,050.74	1.00
CRIME SCENE TECHNICIAN	VACANT	\$44,050.74	1.00
INTERNAL AFFAIRS AGENT I	VACANT	\$46,191.52	1.00

JOB TITLE	STATUS	SALARY	FTE
INTERNAL AFFAIRS AGENT I	VACANT	\$46,191.52	1.00
PAYROLL AUDIT CLERK I	VACANT	\$33,777.82	1.00
POLICE ADMINISTRATIVE AIDE	VACANT	\$41,121.84	1.00
POLICE OFFICER	VACANT	\$40,953.00	1.00
POLICE OFFICER	VACANT	\$40,953.00	1.00
POLICE OFFICER	VACANT	\$40,953.00	1.00
POLICE OFFICER	VACANT	\$40,953.00	1.00
POLICE OFFICER	VACANT	\$40,953.00	1.00
POLICE OFFICER	VACANT	\$40,953.00	1.00
POLICE OFFICER	VACANT	\$40,953.00	1.00
POLICE OFFICER	VACANT	\$40,953.00	1.00
POLICE OFFICER	VACANT	\$40,953.00	1.00
POLICE OFFICER	VACANT	\$40,953.00	1.00
RESEARCH ANALYST	VACANT	\$44,202.41	1.00
SYSTEM ANALYST I	VACANT	\$48,270.14	1.00
SYSTEM ANALYST I	VACANT	\$48,270.14	1.00
CLASSIFIED VACANT		\$1,062,563.49	25.00
ADJUSTMENTS			
FEES & COMPENSATION NOC		\$151,200.00	
FEES & COMPENSATION NOC		\$146,000.00	
HOLIDAY PAY		\$795,000.00	
HOLIDAY PAY		\$18,500.00	
HOLIDAY PAY		\$580,000.00	
HOLIDAY PAY		\$23,000.00	
HOLIDAY PAY		\$210,000.00	
HOLIDAY PAY		\$86,300.00	
HOLIDAY PAY		\$16,000.00	
HOLIDAY PAY		\$1,200.00	
NIGHT DIFFERENTIAL		\$11,000.00	
NIGHT DIFFERENTIAL		\$275,000.00	
NIGHT DIFFERENTIAL		\$358,000.00	
OVERTIME		\$4,000,000.00	
OVERTIME		\$4,000,000.00	
UNIFORM ALLOWANCE		\$21,000.00	
TOTAL ADJUSTMENTS		\$10,692,200.00	
TOTAL FUND 100		\$40,345,456.41	505.5
FUND 3100			
UNCLASSIFIED			
ALCOHOL SAFETY COORDINATOR	FILLED	\$63,000.00	1.00
OFFICE OF HIGHWAY SAFETY PLANNER/COORDINATOR	FILLED	\$75,000.00	1.00
POLICE OFFICER	FILLED	\$40,953.00	1.00
POLICE OFFICER	FILLED	\$40,953.00	1.00
POLICE OFFICER	FILLED	\$40,953.00	1.00
POLICE OFFICER	FILLED	\$40,953.00	1.00
POLICE OFFICER	FILLED	\$40,953.00	1.00
POLICE OFFICER	FILLED	\$40,953.00	1.00

JOB TITLE	STATUS	SALARY	FTE
UNCLASSIFIED FILLED		\$383,718.00	8.00
UNCLASSIFIED			
ADMINISTRATIVE SPECIALIST	VACANT	\$50,000.00	1.00
COMPLIANCE OFFICER	VACANT	\$76,500.00	1.00
LAW ENFORCEMENT LIAISON	VACANT	\$72,500.00	1.00
POLICE OFFICER	VACANT	\$40,953.00	1.00
POLICE OFFICER	VACANT	\$40,953.00	1.00
POLICE OFFICER	VACANT	\$40,953.00	1.00
POLICE OFFICER	VACANT	\$40,953.00	1.00
POLICE OFFICER	VACANT	\$40,953.00	1.00
POLICE OFFICER	VACANT	\$40,953.00	1.00
POLICE OFFICER	VACANT	\$40,953.00	1.00
POLICE OFFICER	VACANT	\$40,953.00	1.00
POLICE OFFICER	VACANT	\$40,953.00	1.00
POLICE OFFICER	VACANT	\$40,953.00	1.00
POLICE OFFICER	VACANT	\$40,953.00	1.00
POLICE OFFICER	VACANT	\$40,953.00	1.00
VIOHS TRAFFIC RECORDS PROJECTS MANAGER	VACANT	\$80,000.00	1.00
UNCLASSIFIED VACANT		811,389.00	17.00
CLASSIFIED			
FISCAL OFFICER	FILLED	\$55,878.72	1.00
POLICE OFFICER	FILLED	\$40,953.00	1.00
CLASSIFIED FILLED		\$96,831.72	2.00
CLASSIFIED			
COORDINATOR MOTOR CARRIER	VACANT	50,683.65	1.00
CLASSIFIED VACANT		50,683.65	1.00
ADJUSTMENTS			
DRIVE SAFE (CCR)		\$10,800.00	
FITTING STATIONS		\$33,000.00	
MOTOR CARRIER INSPECTOR STIPENDS		\$19,800.00	
OVERTIME		\$110,656.50	
OVERTIME		\$110,656.50	
SADD		\$30,800.00	
TIDAS		\$28,400.00	
TRAFFIC RECORDS PROGRAM - STIPENDS EMS		\$20,000.00	
TOTAL ADJUSTMENTS		\$364,113.00	
TOTAL FUND 3100		\$1,706,735.37	28.00
TOTAL VIPD		\$ 42,052,191.78	533.5

*33 filled positions under \$35,000*



COMMITTEE ON BUDGET, APPROPRIATIONS & FINANCE  
- POST AUDIT DIVISION -

---

P.O. Box 1690  
Emancipation Garden Station  
St. Thomas, Virgin Islands 00840  
Phone: (340) 774-2478